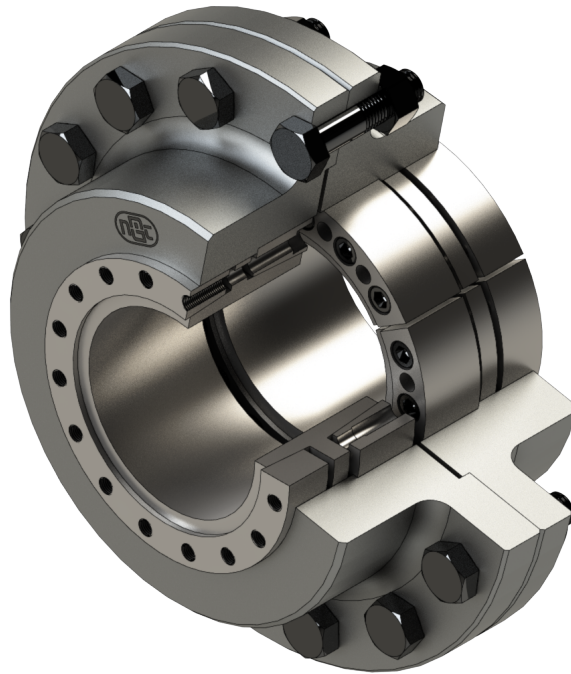


## Keyless Flange Coupling - Model NKF



### ◆ Features :

- Stronger connection than keyed connections
- Compact Design
- Single Taper Design
- Small axial space required for installation
- Quick assemble/disassemble in minimal downtime
- No fretting corrosion

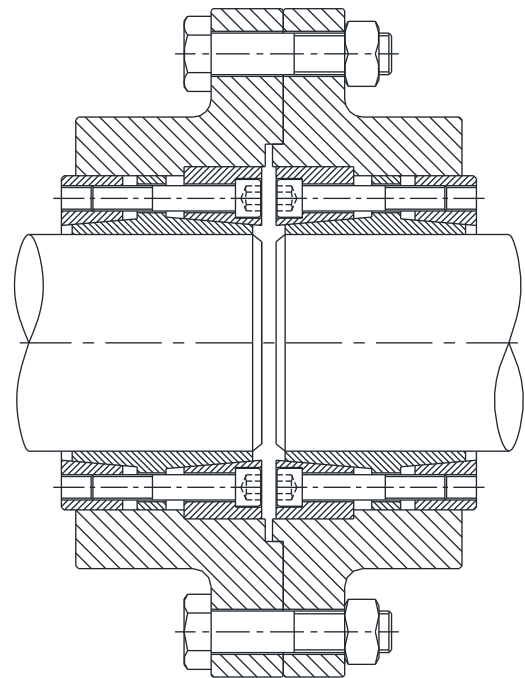
### ◆ Applications :

- Conveyor pulley drive
- Bucket elevators
- Mining
- Material Handling systems
- Fans
- Other drive units application

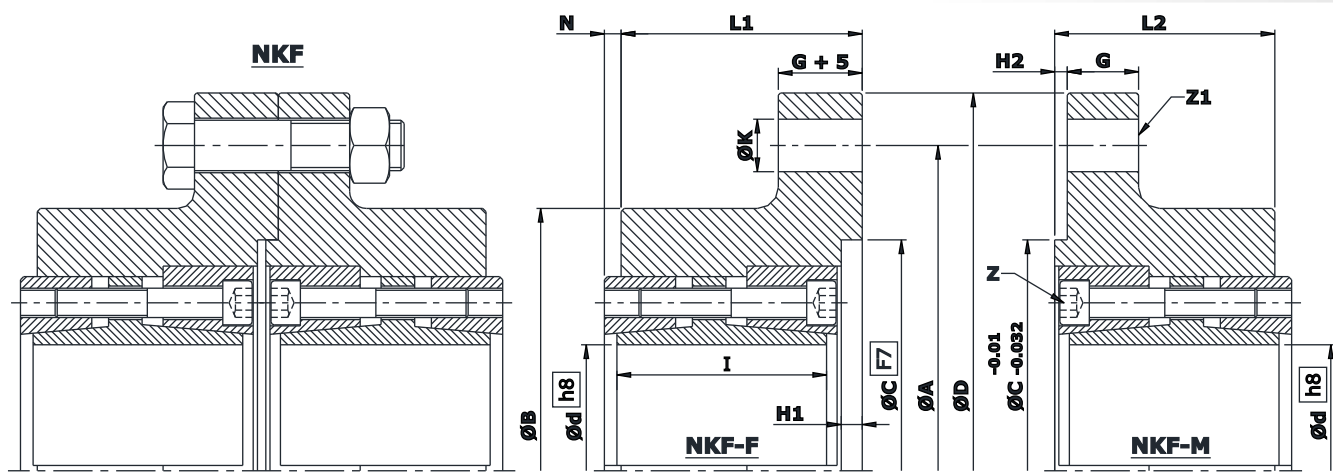
### ◆ Tolerance & Surface finish:

- A good Surface finish by Machine tool is sufficient. Maximum allowable Surface finish  $R_a \leq 3.2\mu\text{m}$
- Maximum Permissible Tolerance for Shaft is h8.

### ◆ Mounting Example:



## KEYLESS FLANGE COUPLING NKF



> Flange connection screws have to used 10.9 or 12.9 Grade according DIN EN ISO 4014 property class.  
 > For Order follow below Notes & Model or required size inform to NMTG  
 for Pair Coupling required: **NKF Model**,  
 for Half Female Part of Coupling: **NKF-F model**, for Half Male Part of Coupling: **NKF-M Model**

Type	d mm	Transmissible Torque Nm (Mt)	D mm	B mm	C mm	A mm	I mm	L1 mm	L2 mm	H1 mm	H2 mm	N mm	K mm	G mm	Flange Screw (10.9 or 12.9 Grade) Tightening		Clamping Screw Tightening		Weight kg
															Z1 Nos. x Size	Torque Nm	Z Nos. x Size	Torque Nm	
50	Min. 25 Max. 50	2610 5235	190	120	100	160	60	70	65	5	3	5	11	10	8 x M10	71	8 x M8	41	7.5 6.8
70	Min. 50 Max. 70	7500 10500	260	170	150	230	75	88	81	5	3	5	15	15	8 x M14	195	9 x M10	83	32 30
90	Min. 70 Max. 90	16200 20600	320	200	180	280	90	103	96	7	5	6	18	25	8 x M16	300	9 x M12	145	39 37
115	Min. 95 Max. 115	29300 35490	400	230	300	350	100	115	105	10	6	8	25	30	8 x M24	1020	7 x M14	230	47 45
140	Min. 115 Max. 140	50600 61700	400	270	300	350	100	115	105	10	6	8	25	30	8 x M24	1020	10 x M14	230	55 51
170	Min. 140 Max. 170	92880 112750	560	330	300	480	128	145	135	12	8	10	32	36	18 x M30	2030	11 x M16	355	112 105
210	Min. 170 Max. 210	164000 202650	560	390	300	480	128	145	135	12	8	10	32	36	18 x M30	2030	16 x M16	355	137 125
211	Min. 170 Max. 210	164000 202650	630	430	350	550	128	145	135	12	8	10	32	40	18 x M30	2030	16 x M16	355	160 148
250	Min. 210 Max. 250	273900 326100	630	470	350	550	140	160	150	12	8	10	32	40	18 x M30	2030	14 x M20	690	199 183
270	Min. 250 Max. 270	374700 402500	710	510	550	630	158	179	169	12	8	10	32	40	24 x M30	2030	16 x M 20	690	259 249
290	Min. 270 Max. 290	452800 486370	710	550	550	630	158	179	169	12	8	10	32	40	24 x M30	2030	18 x M20	690	286 275
320	Min. 290 Max. 320	540400 590000	750	580	550	680	180	200	190	12	8	10	32	40	28 x M30	2030	20 x M20	690	318 338
350	Min. 320 Max. 350	596000 652000	800	630	550	720	180	200	190	12	8	10	32	45	28 x M30	2030	20 x M20	690	401 380

Dimensions/Design subject to modifications without any prior intimation.

DISTRIBUTED BY



[chainanddrives.com.au](http://chainanddrives.com.au)  
[support@chainanddrives.com.au](mailto:support@chainanddrives.com.au)