

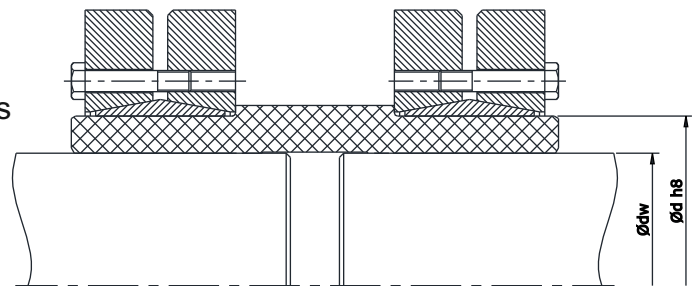
## Shrink Disc - Model NC 4071



### ◆ Features :

- Rigid shaft-to-shaft coupling with sleeve and Three part Shrink disc
- Torque Transmission Capacity: Medium
- Connection of shafts of different diameters is possible
- Easy Mounting & Removal

### ◆ Mounting Example:



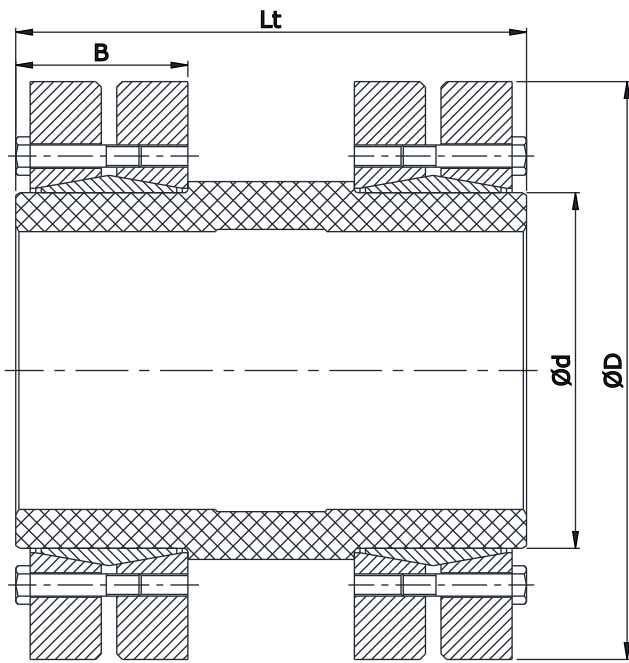
### ◆ Tolerance & Surface finish:

- A good Surface finish by Machine tool is sufficient. Maximum allowable Surface finish  $R_a \leq 3.2\mu\text{m}$
- For Maximum Permissible Tolerance for Shaft & Hub refer Table. (Page No . - 22)

### Ordering Example :

- When ordering please specify : dw x D x Lt
- **NC 4071 - 70 x 170 x 160 - 00**

## Shaft Coupling Model NC 4071



- d = Inner diameter
- D = Outer diameter
- dw = Solid Shaft diameter
- B = Overall width with screws
- Lt = Total length
- S = Clamping thread
- Ma = Tightening torque of the screws
- Mt = Transmissible torque at given Ma
- Pax = Axial Thrust

d x D mm	dw mm	B mm	Lt mm	Transmissible Torque Nm (Mt)	Axial Thrust kN (P <sub>ax</sub> )	Tightening screws	
						DIN 913 10.9 size(s)	Tightening Torque Nm (Ma)
30 x 60	24	25	55	300	29	M5	4
	25			335	31		
	26			370	33		
36 x 72	28	27.5	65	440	50	M6	12
	30			570	58		
	31			630	58		
40 x 75	30	28.5	65	605	62	M6	12
	31			607	60		
	32			660	63		
44 x 80	32	29.5	70	710	64	M6	12
	35			780	74		
	36			860	77		
50 x 90	38	31.5	80	940	79	M6	12
	40			1160	86		
	42			1380	92		
55 x 100	42	34.5	85	1160	79	M6	12
	45			1520	88		
	48			1880	97		
62 x 110	48	34.5	90	1850	100	M6	12
	50			2200	111		
	52			2400	115		
68 x 115	50	34.5	100	2000	97	M6	12
	55			2500	106		
	60			3150	120		
75 x 138	55	38	120	2500	119	M8	30
	60			3200	137		
	65			3950	155		
80 x 145	60	38	130	3200	124	M8	30
	65			3900	140		
	70			4600	158		

## Shaft Coupling Model NC 4071

d x D mm	dw mm	B mm	Lt mm	Transmissible Torque Nm	Axial Thrust kN	Tightening screws	
				(Mt)	(P <sub>ax</sub> )	DIN 913 10.9 size(s)	Tightening Torque Nm (Ma)
90 x 155	65	44.5	140	4750	170	M8	30
	70			6000	190		
	75			7250	210		
100 x 170	70	49.5	160	6900	195	M8	30
	75			7500	220		
	80			9000	240		
110 x 185	75	57	180	7200	229	M10	59
	80			9000	252		
	85			10800	262		
125 x 215	85	61	200	11000	296	M10	59
	90			13000	324		
	95			15000	352		
140 x 230	95	68.5	210	15100	367	M12	100
	100			17600	396		
	105			20100	425		
155 x 265	105	72.5	230	22000	447	M12	100
	110			25000	478		
	115			28000	509		
165 x 290	115	81	240	31000	595	M16	250
	120			35000	630		
	125			39000	655		
175 x 300	125	81	250	36000	605	M16	250
	130			41000	639		
	135			45000	675		
185 x 330	135	96	265	52000	778	M16	250
	140			57000	819		
	145			62000	861		
195 x 350	140	96	280	65000	933	M16	250
	150			76000	1025		
	155			81500	1071		
200 x 350	150	96	290	74000	990	M16	250
	155			80000	1035		
	160			86000	1080		
220 x 370	160	114	310	95000	1190	M16	250
	165			102000	1239		
	170			110000	1290		
240 x 405	170	122	350	120000	1464	M20	490
	180			138000	1576		
	190			156000	1675		
260 x 430	190	133	390	164000	1760	M20	490
	200			184000	1880		
	210			205000	2010		
280 x 460	210	147	430	217000	2090	M20	490
	220			244000	2220		
	230			270000	2350		
300 x 485	230	155	445	275000	2431	M20	490
	240			295000	2567		
	245			315000	2636		

## Shaft Coupling Model NC 4071

d x D mm	dw mm	B mm	Lt mm	Transmissible Torque Nm	Axial Thrust kN	Tightening screws	
				(Mt)	(P <sub>ax</sub> )	DIN 913 10.9 size(s)	Tightening Torque Nm (Ma)
320 x 520	240	155	460	312000	2647	M20	490
	250			340000	2786		
	260			374000	2900		
340 x 570	250	169	480	390000	3119	M20	490
	260			422500	3249		
	270			460000	3400		
350 x 580	270	175	490	442000	3276	M20	490
	280			480000	3430		
	285			500000	3500		
360 x 590	280	175	500	463000	3310	M20	490
	290			502000	3461		
	295			522000	3536		
380 x 645	290	183	530	567000	3910	M24	840
	300			610000	4080		
	310			658000	4248		
390 x 660	300	183	540	624000	4160	M24	840
	310			671000	4330		
	320			718000	4484		
400 x 680	315	183	540	670000	4260	M24	840
	320			695000	4345		
	330			744000	4500		
420 x 690	330	203	580	780000	4850	M24	840
	340			840000	5040		
	350			900000	5220		
440 x 750	340	220	600	806000	4740	M24	840
	350			860000	4910		
	360			917000	5090		
460 x 770	360	220	620	1000000	5670	M24	840
	370			1070000	5860		
	380			1140000	6050		
480 x 800	380	230	645	1170000	6150	M24	840
	390			1240000	6350		
	400			1310000	6550		
500 x 850	400	230	670	1312000	6560	M27	1250
	410			1380000	6730		
	420			1455000	6930		

DISTRIBUTED BY



[chainanddrives.com.au](http://chainanddrives.com.au)  
[support@chainanddrives.com.au](mailto:support@chainanddrives.com.au)