

Rigid Coupling - Model N500



◆ Features :

- Three part Rigid Coupling
- Torque Transmission Capacity: Medium
- Easy Mounting
- Easy Removal
- Single Taper Design
- Connection of shafts with different diameter is possible through stepped bore inner ring or Adapter sleeve.

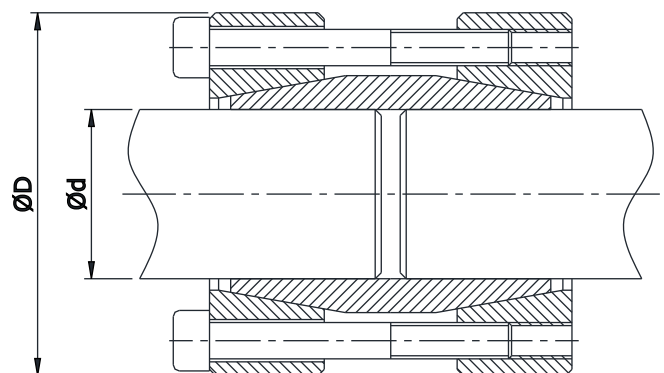
◆ Tolerance & Surface finish:

- A good Surface finish by Machine tool is sufficient. Maximum allowable Surface finish $R_a \leq 3.2\mu\text{m}$
- Maximum Permissible Tolerance for Shaft is h8.

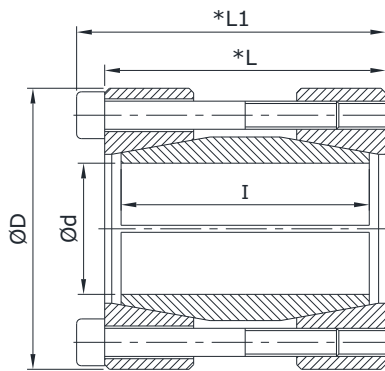
Ordering Example :

- When ordering please specify : d x D
- **N500 - 50 x 90 - 00**

◆ Mounting Example:



Rigid Coupling Model N500



- d =Inner diameter
 D =Outer diameter
 L1 =Overall width with screws
 L =Overall width without screws
 Ma =Tightening torque of the screws
 Mt =Transmissible torque at given Ma
 P' =Surface pressure on shaft at given Ma
 Pax =Axial Thrust
 W =Weight

d x D mm	I mm	L mm	L1 mm	Transmissible Torque Nm (Mt)	Axial Thrust KN (Pax)	Surface Pressure on Shaft N/mm ² P'	Tightening Screws		Weight Kg (W)
							DIN912 12.9 No. x size(s)x Lb	Tightening Torque Nm (Ma)	
10 x 35	38	42	46	59	74	182	4 x M4 x 35	4.9	0.28
11 x 35	38	42	46	64	78	166	4 x M4 x 35	4.9	0.28
12 x 35	38	42	46	69	83	152	4 x M4 x 35	4.9	0.28
15 x 45	46	50	56	195	244	280	4 x M6 x 45	17	0.43
16 x 45	46	50	56	215	263	262	4 x M6 x 45	17	0.43
17 x 45	46	50	56	224	283	247	4 x M6 x 45	17	0.43
18 x 50	46	50	56	234	302	233	4 x M6 x 45	17	0.52
19 x 50	46	50	56	254	312	221	4 x M6 x 45	17	0.52
20 x 50	46	50	56	263	332	210	4 x M6 x 45	17	0.52
22 x 55	56	60	66	439	546	243	6 x M6 x 55	17	0.79
24 x 55	56	60	66	478	605	223	6 x M6 x 55	17	0.79
25 x 55	56	60	66	497	624	215	6 x M6 x 55	17	0.79
28 x 60	56	60	66	556	702	191	6 x M6 x 55	17	0.90
30 x 60	56	60	66	605	751	178	6 x M6 x 55	17	0.90
32 x 65	56	60	66	644	800	168	6 x M6 x 55	17	0.99
35 x 75	71	75	83	747	931	141	4 x M8 x 70	41	1.62
38 x 75	71	75	83	805	1009	130	4 x M8 x 70	41	1.62
40 x 75	71	75	83	854	1067	123	4 x M8 x 70	41	1.62
42 x 78	71	75	83	892	1116	117	4 x M8 x 70	41	1.57
45 x 85	80	85	93	1436	1795	146	6 x M8 x 75	41	2.29
48 x 90	80	85	93	1533	1921	136	6 x M8 x 75	41	2.30
50 x 90	80	85	93	1601	1998	131	6 x M8 x 75	41	2.30
55 x 95	80	85	93	2347	2929	158	8 x M8 x 75	41	2.33
60 x 100	80	85	93	2561	3201	146	8 x M8 x 75	41	2.48
65 x 102	80	85	93	2774	3463	134	8 x M8 x 75	41	2.65
68 x 110	80	85	93	2900	3628	128	8 x M8 x 75	41	2.80
70 x 115	95	100	110	3619	4516	130	6 x M10 x 90	83	3.68
75 x 120	95	100	110	3870	4844	122	6 x M10 x 90	83	4.16
80 x 125	95	100	110	5510	6890	152	8 x M10 x 90	83	4.38

DISTRIBUTED BY



chainanddrives.com.au
support@chainanddrives.com.au