

Barrel Couplings

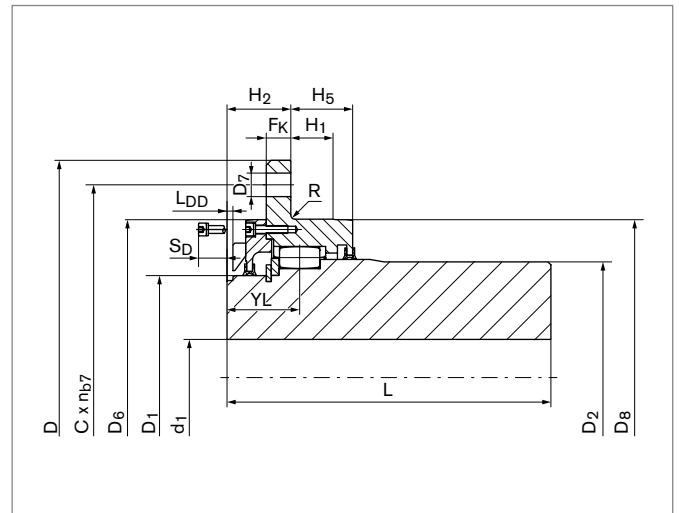
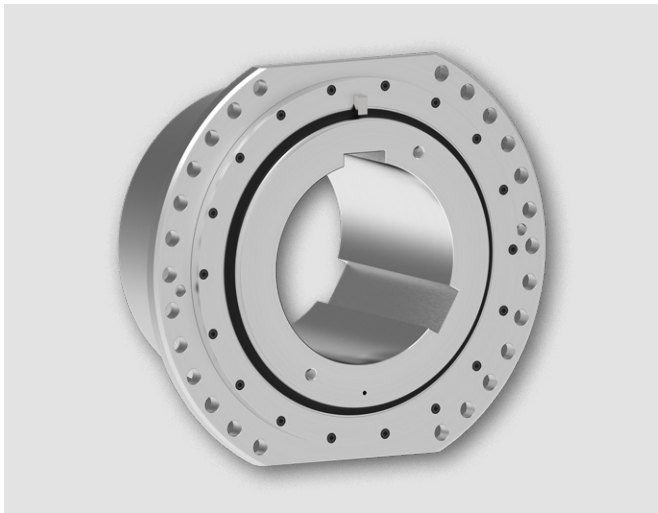
RINGFEDER® TNK TKVO

Performance and Application Optimized Type

DISTRIBUTED BY



chainanddrives.com.au
support@chainanddrives.com.au



| Identifier | SEB 666212 | Size | T _{Kmax} | F _{rad} | d _{1kmin} | d _{1kmax} | D | D ₂ | L | L _{min} | D ₁ | D ₆ | D ₈ | H ₁ | R | H ₂ | F _K | H ₅ | YL |
|------------|------------|------|-------------------|------------------|--------------------|--------------------|-----|----------------|-----|------------------|----------------|----------------|----------------|----------------|-----|----------------|----------------|----------------|------|
| | | | Nm | N | mm | mm | mm | mm | mm | mm | mm | mm | mm | mm | mm | mm | mm | mm | mm |
| WG3125 | (*) | 25 | 6500 | 17650 | 20 | 70 | 250 | 110 | 95 | 85 | 95 | 159 | 160 | 16 | 2,5 | 42 | 12 | 31 | 44,0 |
| WG3128 | (*) | 50 | 8400 | 20000 | 20 | 80 | 280 | 127 | 100 | 85 | 110 | 179 | 180 | 16 | 2,5 | 42 | 12 | 33 | 45,0 |
| WG3132 | (*) | 75 | 10500 | 21500 | 20 | 90 | 320 | 142 | 110 | 95 | 125 | 199 | 200 | 17 | 2,5 | 45 | 15 | 32 | 46,0 |
| WG3134 | (*) | 100 | 16000 | 28000 | 20 | 100 | 340 | 155 | 125 | 95 | 140 | 219 | 220 | 19 | 2,5 | 45 | 15 | 34 | 47,0 |
| WG3136 | (*) | 130 | 21500 | 37000 | 47 | 115 | 360 | 175 | 130 | 95 | 160 | 239 | 240 | 19 | 2,5 | 45 | 15 | 36 | 48,0 |
| WG3138 | (*) | 160 | 27000 | 42500 | 47 | 130 | 380 | 194 | 145 | 95 | 180 | 259 | 260 | 21 | 2,5 | 45 | 15 | 35 | 48,0 |
| WG3140 | SG130 | 200 | 31500 | 48000 | 47 | 145 | 400 | 213 | 170 | 95 | 200 | 279 | 280 | 21 | 2,5 | 45 | 15 | 37 | 48,0 |
| WG3142 | (*) | 300 | 39000 | 53000 | 47 | 160 | 420 | 234 | 175 | 95 | 220 | 309 | 310 | 25 | 2,5 | 45 | 15 | 40 | 50,0 |
| WG3145 | SG140 | 400 | 53500 | 75000 | 47 | 190 | 450 | 274 | 185 | 120 | 260 | 339 | 340 | 21 | 2,5 | 60 | 20 | 39 | 60,5 |
| WG3151 | (*) | 500 | 91000 | 118000 | 77 | 215 | 510 | 314 | 220 | 125 | 295 | 399 | 400 | 29 | 2,5 | 60 | 20 | 49 | 64,5 |
| WG3155 | SG185 | 600 | 127000 | 132000 | 77 | 225 | 550 | 329 | 240 | 125 | 310 | 419 | 420 | 29 | 2,5 | 60 | 20 | 49 | 64,5 |
| WG3158 | SG200 | 1000 | 180000 | 145000 | 102 | 255 | 580 | 368 | 260 | 130 | 350 | 449 | 450 | 29,5 | 2,5 | 60 | 20 | 49,5 | 65,0 |
| WG3165 | SG240 | 1500 | 241000 | 184000 | 102 | 305 | 650 | 431 | 315 | 140 | 415 | 529 | 530 | 31,5 | 2,5 | 65 | 25 | 51,5 | 68,0 |
| WG3166 | (*) | 2100 | 360000 | 283000 | 102 | 315 | 665 | 458 | 330 | 145 | 430 | 544 | 545 | 43 | 4,0 | 65 | 25 | 63 | 74,0 |
| WG3168 | SG270 | 2600 | 425000 | 330000 | 102 | 325 | 680 | 470 | 350 | 145 | 445 | 559 | 560 | 43 | 4,0 | 65 | 25 | 63 | 74,0 |
| WG3171 | SG315 | 3400 | 529000 | 366000 | 178 | 350 | 710 | 502 | 380 | 165 | 475 | 599 | 600 | 38 | 4,0 | 81 | 35 | 63 | 86,0 |
| WG3178 | SG355 | 4200 | 660000 | 420000 | 208 | 395 | 780 | 566 | 410 | 165 | 535 | 669 | 670 | 40 | 4,0 | 81 | 35 | 66 | 87,5 |
| WG3185 | SG400 | 6200 | 815000 | 490000 | 238 | 440 | 850 | 630 | 450 | 165 | 600 | 729 | 730 | 42 | 4,0 | 81 | 35 | 65 | 87,5 |

*Construction and design acc. to operation sheet of German Steel Iron Industry SEB 666212

To continue see next page

Barrel Couplings RINGFEDER® TNK TKVO

| Identifier | SEB 666212 | Size | C | n _{b7} | d ₇ | S (h9/F8) | S _D | G _G | L _{DD} | X _a | J _{sb} | G _{Wsb} |
|------------|------------|------|-----|-----------------|----------------|-----------|----------------|----------------|-----------------|----------------|-----------------------------------|------------------|
| | | | mm | | mm | mm | mm | inch | mm | mm | 10 ⁻³ kgm ² | kg |
| WG3125 | (*) | 25 | 220 | 10 | 15 | 220 | 50 | G1/8 | 5 | +/-3 | 60 | 13 |
| WG3128 | (*) | 50 | 250 | 10 | 15 | 250 | 50 | G1/8 | 5 | +/-3 | 90 | 17 |
| WG3132 | (*) | 75 | 280 | 10 | 19 | 280 | 60 | G1/8 | 5 | +/-4 | 170 | 24 |
| WG3134 | (*) | 100 | 300 | 10 | 19 | 300 | 60 | G1/8 | 5 | +/-4 | 240 | 32 |
| WG3136 | (*) | 130 | 320 | 10 | 19 | 320 | 60 | G1/8 | 5 | +/-4 | 330 | 38 |
| WG3138 | (*) | 160 | 340 | 10 | 19 | 340 | 60 | G1/8 | 5 | +/-4 | 450 | 48 |
| WG3140 | SG130 | 200 | 360 | 10 | 19 | 360 | 60 | G1/8 | 5 | +/-4 | 650 | 64 |
| WG3142 | (*) | 300 | 380 | 10 | 19 | 380 | 60 | G1/8 | 5 | +/-4 | 910 | 79 |
| WG3145 | SG140 | 400 | 400 | 10 | 24 | 400 | 70 | G1/4 | 9 | +/-4 | 1520 | 108 |
| WG3151 | (*) | 500 | 460 | 10 | 24 | 460 | 70 | G1/4 | 7 | +/-6 | 3090 | 163 |
| WG3155 | SG185 | 600 | 500 | 10 | 24 | 500 | 70 | G1/4 | 7 | +/-6 | 4060 | 195 |
| WG3158 | SG200 | 1000 | 530 | 14 | 24 | 530 | 70 | G1/4 | 7 | +/-6 | 5880 | 244 |
| WG3165 | SG240 | 1500 | 600 | 14 | 24 | 580 | 80 | G1/4 | 7 | +/-6 | 12630 | 404 |
| WG3166 | (*) | 2100 | 615 | 26 | 24 | 590 | 90 | G1/4 | 6 | +/-6 | 15670 | 467 |
| WG3168 | SG270 | 2600 | 630 | 26 | 24 | 600 | 90 | G1/4 | 6 | +/-6 | 18150 | 520 |
| WG3171 | SG315 | 3400 | 660 | 26 | 28 | 640 | 90 | G1/4 | 10 | +/-8 | 25460 | 598 |
| WG3178 | SG355 | 4200 | 730 | 26 | 28 | 700 | 90 | G1/4 | 10 | +/-8 | 42020 | 795 |
| WG3185 | SG400 | 6200 | 800 | 26 | 28 | 760 | 90 | G1/4 | 10 | +/-8 | 67270 | 1049 |

*Construction and design acc. to operation sheet of German Steel Iron Industry SEB 666212

Explanations

| | | |
|---|---|---|
| T_{Kmax} = Max. transmissible torque of the coupling | D₁ = Outer diameter hub | n_{b7} = Quantity of bore d ₇ |
| F_{rad} = Admissible force radial | D₆ = Outer diameter cover | d₇ = Bore diameter Flange |
| d_{1kmin} = Min. bore diameter d ₁ with keyway acc. to DIN 6885-1 | D₈ = Centering diameter | S (h9/F8) = Distance of the flattening |
| d_{1kmax} = Max. bore diameter d ₁ with keyway acc. to DIN 6885-1 | H₁ = Length | S_D = Disassembly Space |
| D = Outer diameter flange | R = Radius | G_G = Whitworth thread |
| D₂ = Outer diameter hub | H₂ = Distance | L_{DD} = Distance dimension |
| L = Total length | F_K = Flange thickness | X_a = Axial gap max. |
| L_{min} = Minimum length | H₅ = Distance | J_{sb} = Moment of inertia at smallest bore diameter |
| | Y_L = Distance | G_{Wsb} = Weight at smallest bore diameter |
| | C = Pitch circle diameter | |

Ordering example

| Identifier | Size | d _{1k} |
|------------|------|-----------------|
| WG3140 | 200 | 80 |

Technical Information

- Without further specifications, we deliver as standard: Bore tolerance H7; Keyway acc. to DIN 6885-1; Keyway width tolerance P9.

Further information on
RINGFEDER® TNK TKVO
 on www.ringfeder.com

Disclaimer of liability

All technical details and notes are non-binding and cannot be used as a basis for legal claims. The user is obligated to determine whether the represented products meet his requirements. We reserve the right to carry out modifications at any time in the interests of technical progress.