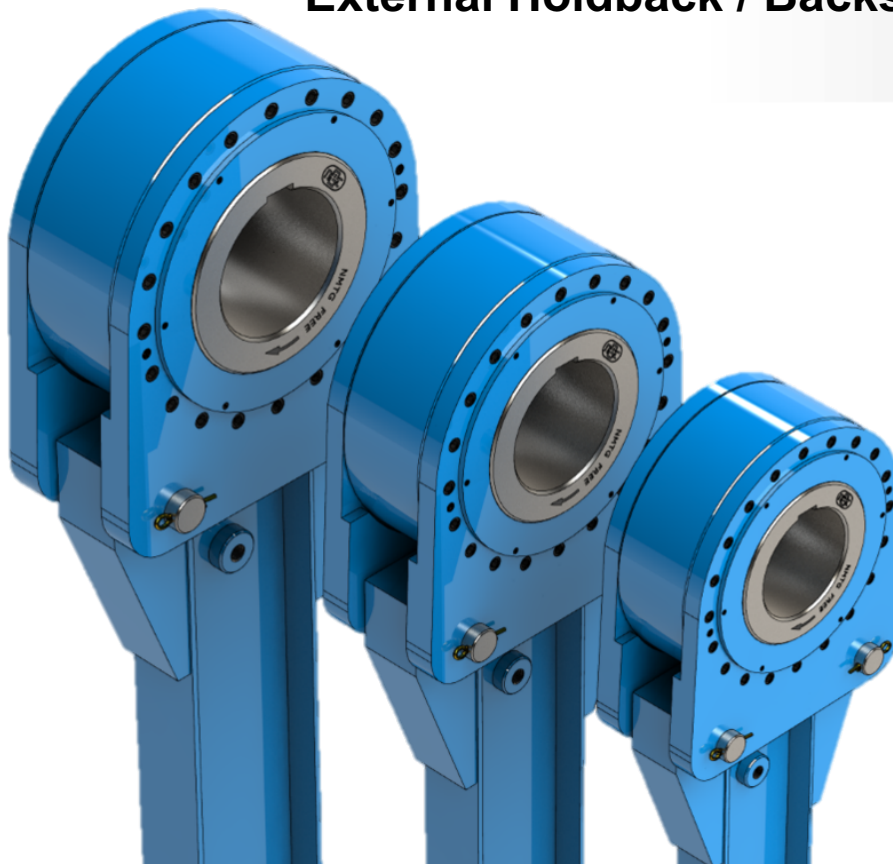


External Holdback / Backstop Clutch

NRSC



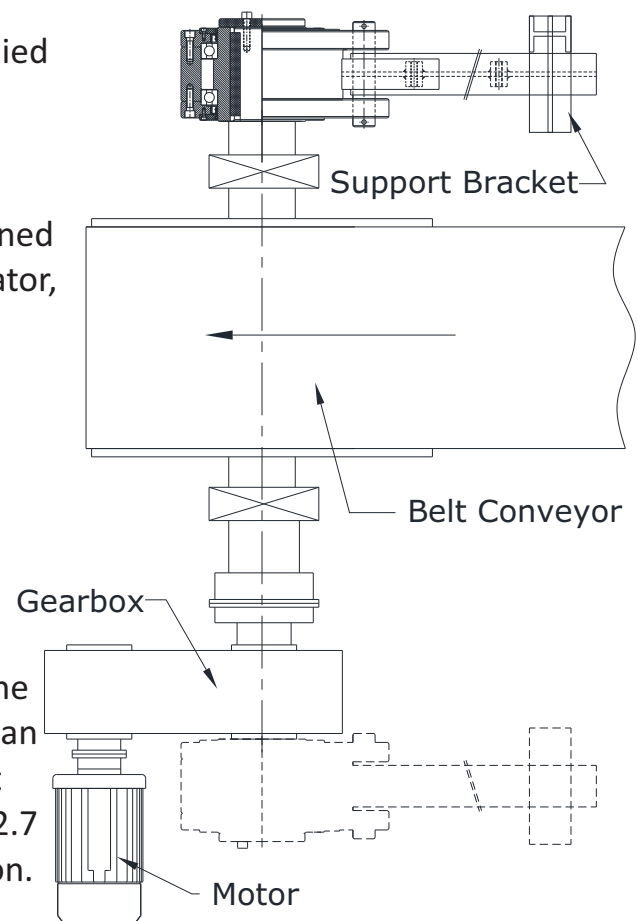
❖ Features:

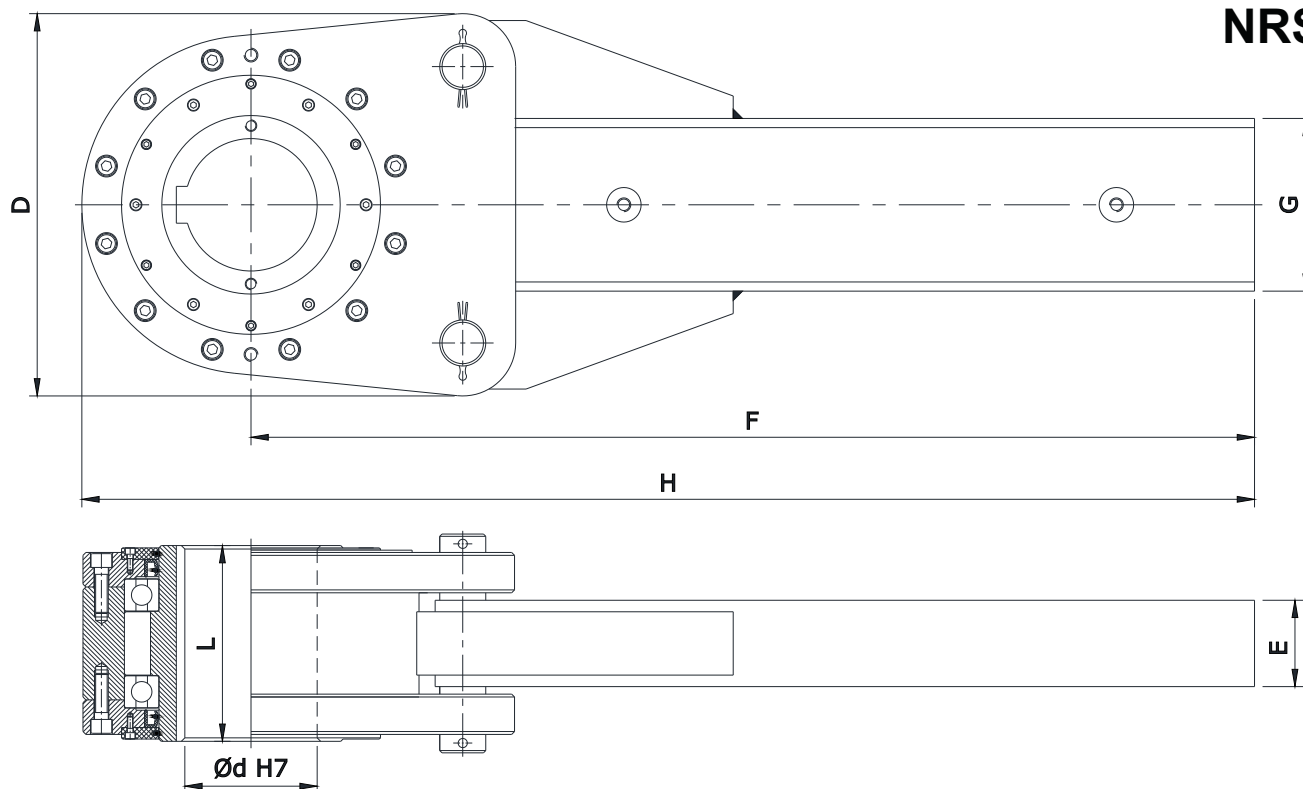
- This type of Freewheel Clutches are Supplied with Lever arm & Roller with Ball bearings support.
- This type of Freewheel Clutches are designed for use in Low speed Inclined Conveyor, Elevator, etc.
- Requires Grease Lubrication.
- Bore range: up to 300 mm.
- Transmitting torque: 215500 Nm.

❖ Mounting:

- The back driving torque is supported by the Lever arm. The positioning of the lever arm can be adjusted at any angle. The lever arm must not be clamped into position. It must have 12.7 mm play in the axial and in the radial direction.

◆ Mounting Example:





| Model | Max. Over Running Speed Inner Race (RPM) | Nominal Torque (Tn) Nm | Max. Shaft Dia (d) mm | D mm | G mm | E mm | H mm | L mm | F mm | Weight (Approx.) Kg |
|-----------|--|------------------------|-----------------------|------|------|------|------|------|------|---------------------|
| NRSC 775 | 300 | 9250 | 100 | 280 | 125 | 70 | 1045 | 160 | 920 | 85 |
| NRSC 800 | 250 | 14000 | 115 | 332 | 150 | 75 | 1420 | 170 | 1274 | 224 |
| NRSC 900 | 180 | 21000 | 140 | 380 | 150 | 75 | 1600 | 185 | 1430 | 173 |
| NRSC 1000 | 150 | 37690 | 165 | 425 | 200 | 100 | 1875 | 220 | 1685 | 248 |
| NRSC 1100 | 135 | 60300 | 180 | 480 | 200 | 100 | 2053 | 230 | 1830 | 349 |
| NRSC 1150 | 120 | 76890 | 200 | 546 | 250 | 125 | 2250 | 255 | 2000 | 468 |
| NRSC 1200 | 105 | 106500 | 230 | 580 | 300 | 140 | 2360 | 280 | 2090 | 575 |
| NRSC 1300 | 90 | 161000 | 280 | 660 | 400 | 140 | 2550 | 320 | 2242 | 805 |
| NRSC 1400 | 80 | 216600 | 300 | 760 | 450 | 150 | 2760 | 350 | 2400 | 1230 |

Notes :

- 1) Function : Backstopping
- 2) $T_{max} = 2 \times T_n$.
- 3) Oil / Grease filled, ready to fit.
- 4) Shaft dia. is to be controlled within h6/j6

- 5) Keyway as per DIN 6885 - 1.
- 6) Other sizes on request.
- 7) All dimensions are in mm.
- 8) We manufacturing in inch series also.

Ordering Example :

- When ordering please specify bore dia.
- NRSC 900 - 120 mm

DISTRIBUTED BY



Dimensions/Design subject to modifications without any prior intimation.