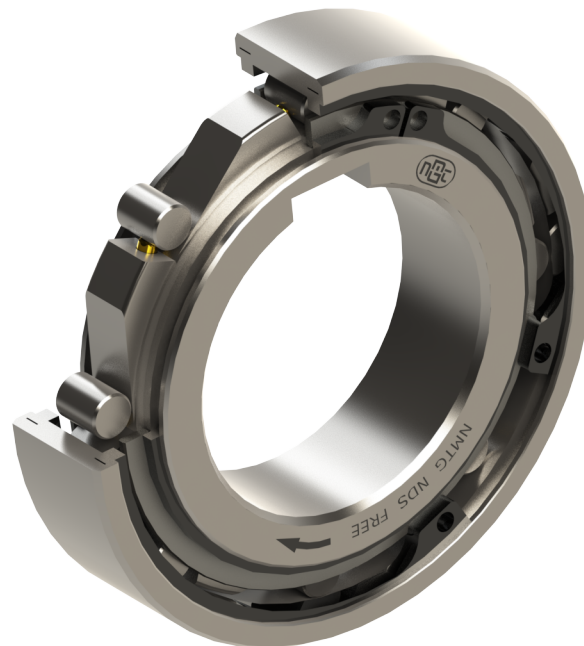


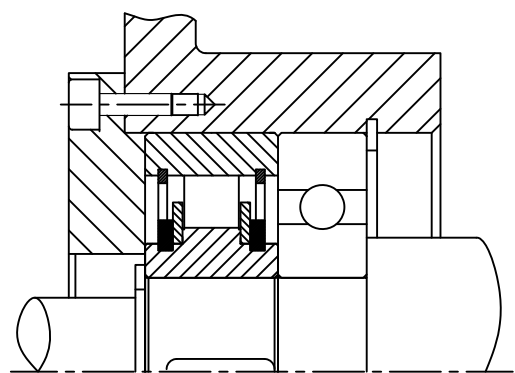
Freewheel One way clutch NDS Model

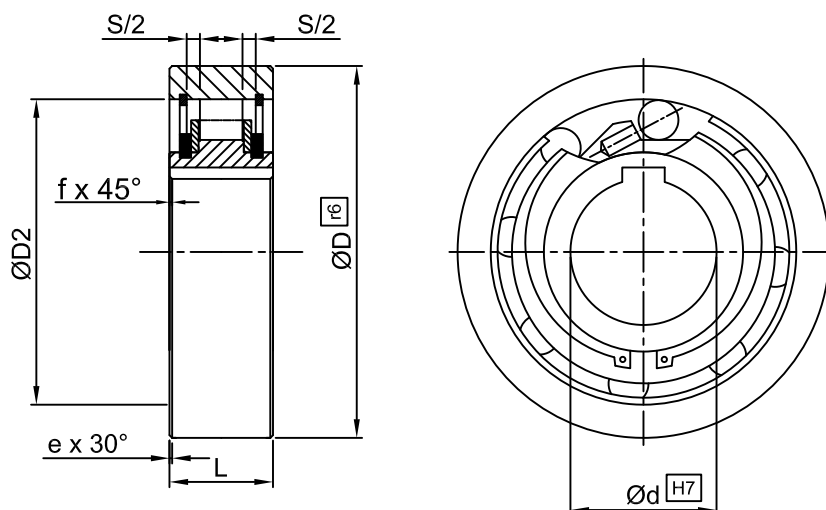


◆ Features :

- Trapped rollers Freewheels NLD model is non-bearing supported, So bearings are required to support axial & radial loads.
- Lubrication & Sealing must be provided for Installation.
- Inner race is keyed to shaft, expect 6mm bore.
- Outer race has positive r6 Tolerance to give a press fit in H7 Housing. Outer Housing must be strong enough to not expand after assembly.
- This Design can accept an axial misalignment of inner & outer race of $\pm S/2$.
- Bore range : up to 80 mm
- Transmitting torque : 1063 Nm

◆ Mounting Example:





NDS

d (H7) mm	Max. Torque Nm	Max. Overrunning Inner Outer RPM	D (r6) mm	D2 mm	L mm	S mm	e mm	f mm	Weight kg
6	2.1	5000 7500	19	15.8	6	0.3	0.6	0.3	0.01
8	3.8	4300 6500	24	20	8	1.3	0.6	0.6	0.02
10	6.8	3500 5200	30	25.9	9	1.3	0.6	0.6	0.03
12	13	3200 4800	32	28	10	1.3	0.6	0.6	0.04
15	14	2800 4300	35	31	11	1.4	0.6	0.6	0.05
20	40	2200 3300	47	40	14	2.4	0.8	0.8	0.12
25	56	1900 2900	52	45.9	15	2.4	0.8	0.8	0.14
30	90	1600 2400	62	55	16	2.4	0.8	1	0.22
35	143	1300 2000	72	64	17	2.5	0.8	1	0.31
40	185	1200 1800	80	72	18	2.5	0.8	1	0.39
45	218	1000 1600	85	77	19	2.5	1.2	1	0.44
50	230	950 1500	90	82	20	2.5	1.2	1	0.49
55	308	800 1300	100	90	21	2.5	1.2	1	0.66
60	508	700 1100	110	100	22	2.5	1.2	1.5	0.81
80	1063	600 900	140	128	26	2.5	1.2	1.5	1.41

Notes :

- 1) Function : Overrunning ing
- 2) $T_{max} = 2 \times T_n$.
- 3) The maximum Overrunning speeds are for Oil lubrication only.
- 4) Shaft dia. is to be controlled within h6/j6.
- 5) NDS 6 without keyway
NDS 8 to NDS 12 keyway to DIN 6885 - 1
Other sizes as per DIN 6885 - 3.
- 6) Other sizes on request.
- 7) All dimensions are in m.m.
- 8) We manufacturing in inch series also.

Ordering Example :

- When ordering please specify bore dia.
- **NDS 50 - 50**

DISTRIBUTED BY

