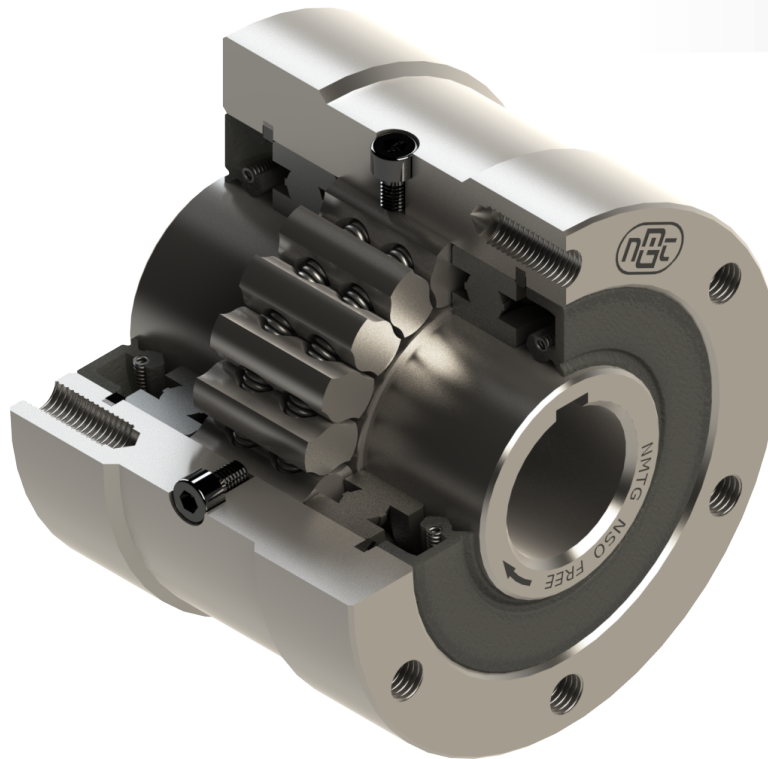


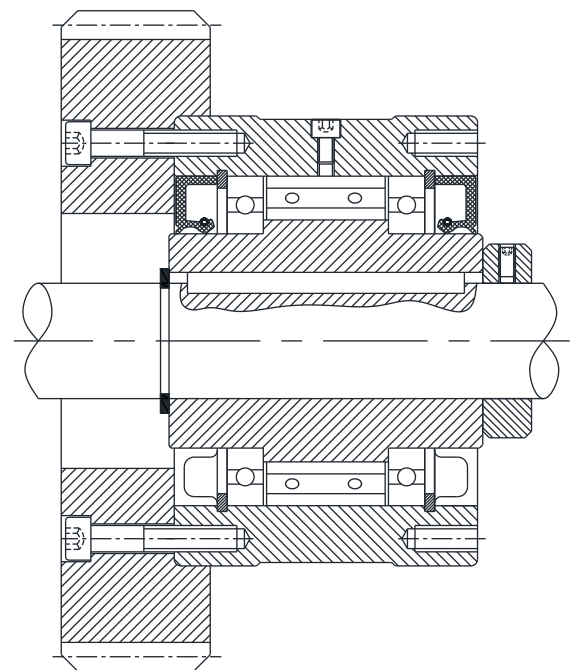
**Freewheel One way clutch / Overrunning Clutch
NSO**

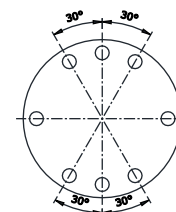
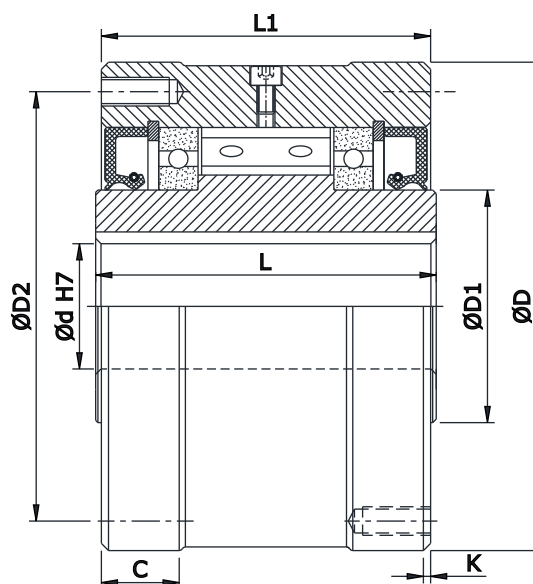
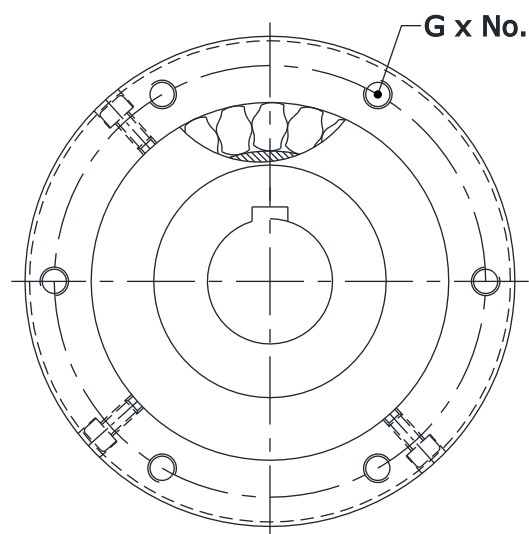


❖ **Features :**

- This type of Freewheels are Sealed & Fitted with Ball bearings & Oil seals.
- Outer race end faces have Tapped Holes for attachment of items such as Coupling, Sprocket, Pulley, etc. with Outside diameter of outer race provided location to ensure Concentricity.
- Oil lubricated suitable for Overrunning, backstopping and medium Duty indexing (up to 150 indexes/minute).
- Grease lubrication is available where high inner race overrunning speeds are required or maintenance is difficult.
- Bore range: up to 180 mm.
- Transmitting torque: 36600 Nm.

◆ **Mounting Example:**





##Hole spacing - NSO700 & 750
All other clutches holes equally spaced.

Model	Max Bore Dia d (H7)	Torque Capacity	Max. Overrunning		L	D (max)	D (min)	L1	C	D1	D2	Number of Holes	G Thread	Depth	K	Weight
	mm (in)	(Tn) Nm (lb ft)	Inner RPM	Outer RPM												
NSO 300	20 (0.750)	379 (275)	3000	900	63.50 (2.50)	76.200 (3.000)	76.150 (2.998)	60.45 (2.38)	-	30	66.670 (2.625)	4@90	M6 (0.250)	12.7 (0.500)	1.5 (0.06)	1.6 (3.5)
NSO 400	22 (0.875)	407 (300)	2800	850	69.85 (2.75)	88.9 (3.500)	88.849 (3.498)	68.28 (2.69)	12.70 (0.50)	30	73.025 (2.875)	4@90	M8 (0.3125)	16 (0.625)	1.5 (0.06)	2.7 (6)
NSO 500	32 (1.312)	1585 (1168)	2500	800	88.90 (3.50)	107.950 (4.250)	107.899 (4.248)	85.73 (3.38)	15.88 (0.63)	45	92.075 (3.625)	4@90	M8 (0.3125)	19 (0.750)	1.5 (0.06)	4.8 (10.5)
NSO 600	50 (2.000)	3100 (2285)	2200	750	95.25 (3.75)	136.525 (5.375)	136.474 (5.373)	92.03 (3.63)	19.05 (0.75)	65	120.650 (4.750)	6@60	M8 (0.3125)	19 (0.750)	1.5 (0.06)	8.6 (19)
NSO 700	70 (2.937)	6900 (5086)	1600	450	127 (5.00)	180.975 (7.125)	180.924 (7.123)	123.83 (4.88)	25.40 (1)	90	158.750 (6.250)	8##	M10 (0.375)	19 (0.750)	1.5 (0.06)	19 (42)
NSO 750	80 (3.250)	9660 (7120)	1000	650	152.40 (6.00)	222.250 (8.750)	222.200 (8.748)	149.22 (5.88)	31.75 (1.25)	110	177.800 (7)	8##	M12 (0.5)	25.4 (1)	1.5 (0.06)	38 (83)
NSO 800	110 (4.250)	17940 (13223)	850	525	152.40 (6.00)	254 (10)	253.95 (9.998)	149.22 (5.88)	31.75 (1.25)	140	227.01 (8.940)	8@45	M12 (0.5)	25.4 (1)	1.5 (0.06)	46 (102)
NSO 900	130 (5.437)	24400 (18000)	700	500	161.90 (6.38)	304.800 (12)	307.72 (11.997)	158.75 (6.25)	34.93 (1.38)	160	247.650 (9.750)	10@36	M16 (0.625)	31.75 (1.25)	1.5 (0.06)	71 (156)
NSO 1000	160 (6.438)	33900 (24987)	500	375	177.80 (7.00)	381 (15)	380.92 (14.997)	171.45 (6.75)	34.93 (1.38)	200	298.450 (11.750)	12@30	M16 (0.625)	31.75 (1.25)	1.5 (0.06)	115 (253)
NSO 1027	180 (7.000)	36600 (27000)	500	375	168.30 (6.63)	381 (15)	380.92 (14.997)	165.10 (6.50)	34.93 (1.38)	220	298.45 (11.750)	12@30	M16 (0.625)	25.4 (1)	1.5 (0.06)	114 (250)

Notes :

- 1) Function : Overrunning, Backstopping, Indexing
- 2) Tmax = 2 x Tn.
- 3) Oil / Grease filled, ready to fit.
- 4) Shaft dia. is to be controlled within h6
- 5) Keyway as per DIN 6885 - 1.
- 6) Other sizes on request.

DISTRIBUTED BY

