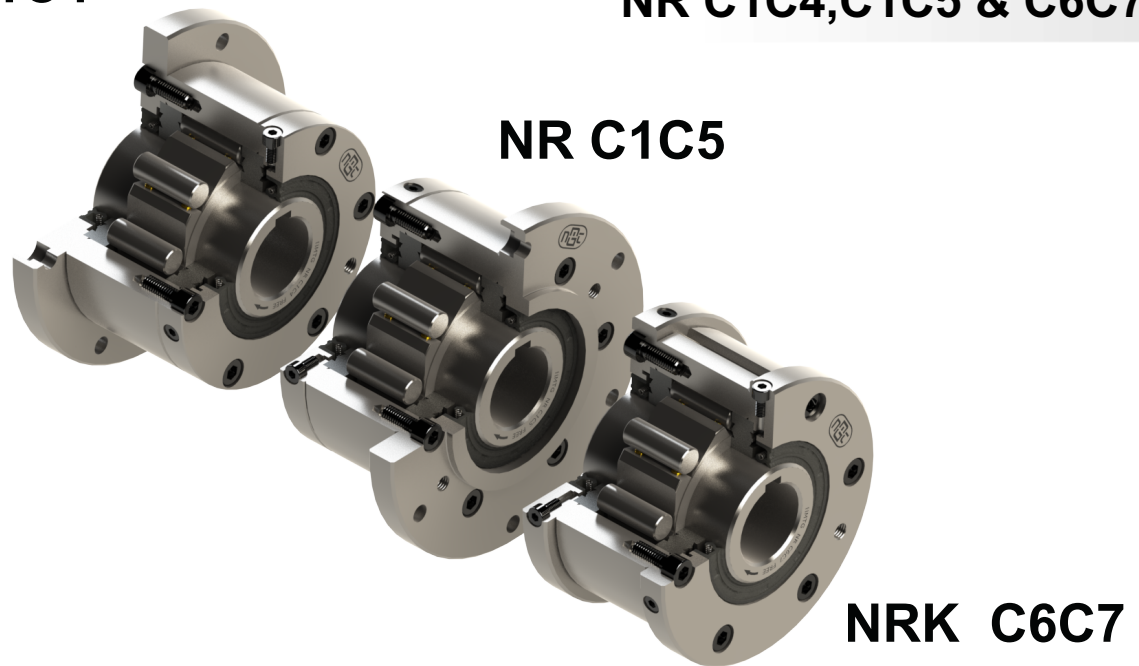


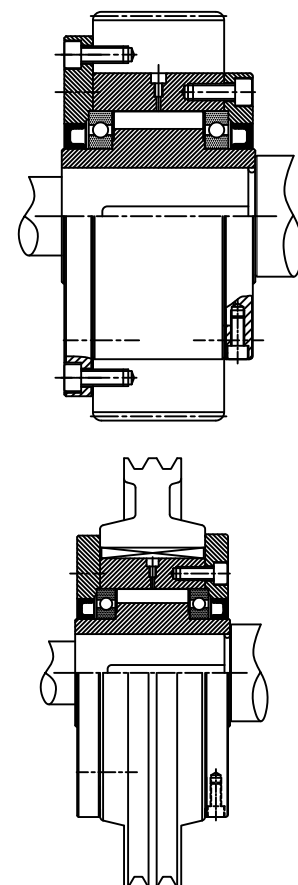
Freewheel One way clutch / Overrunning Clutch
NR C1C4 **NR C1C4,C1C5 & C6C7**

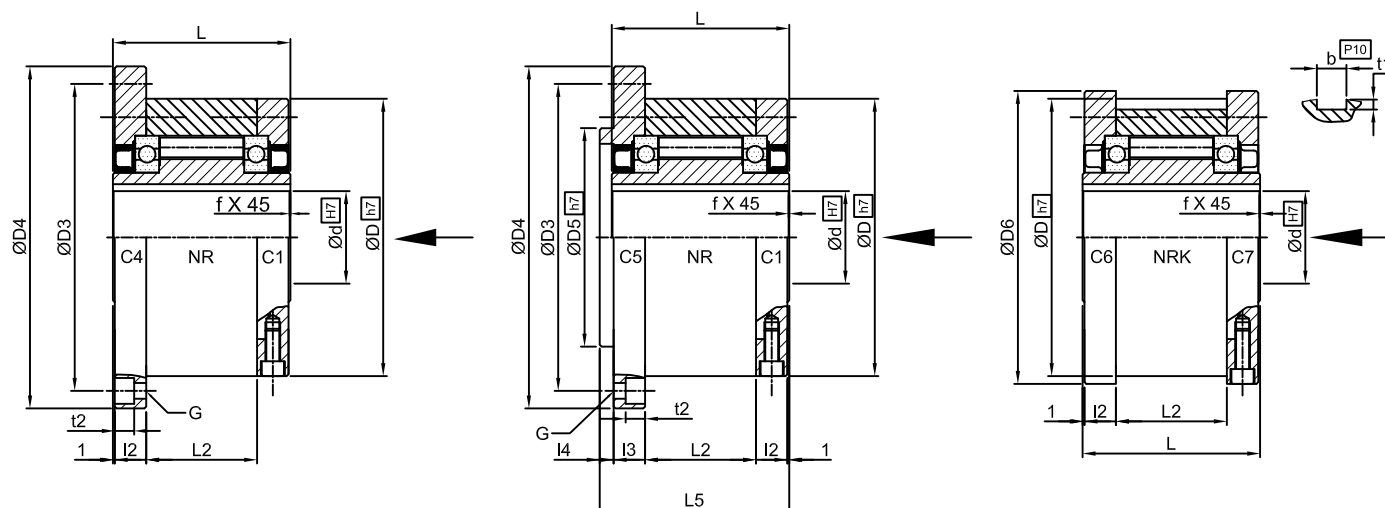


◆ **Features :**

- Trapped rollers Freewheels NR C1C4 & C1C5 models are Self centered by means of Oil Sealing & pairs of ball bearing supported So, unit is Self sealed designed.
- Requires Oil lubrication.
- Component mounted onto the outside diameter of Outer race should be bored to H7 tolerance & Shaft tolerance must be h6/j6.
- This type of Combinations are used as Overrunning & Indexing, in which C1 covers are act as close unit, C4 covers as a flange type cover & C5 as a Spigot type flange cover.
- Bore range : up to 150 mm
- Transmitting torque : 70000 Nm

◆ **Mounting Example:**





NR C1C4

NR C1C5

NRK C6C7

d (H7) mm	Max. Torque Nm	Max. Overrunning Inner RPM	Max. Overrunning Outer RPM	D (H7) Nm	D4 mm	D3 Nm	D5 (h7) mm	D6 Nm	L mm	L2 Nm	L5 mm	I2 Nm	I3 mm	I4 Nm	t2 mm	t1 Nm	b ^{P10} mm	G x No.	f mm	Weight kg
12	55	3100	4700	62	85	72	42	70	42	20	44	10	10	3	5.7	2.5	4	5.5 x 3	0.5	1.2
15	125	2800	4400	68	92	78	47	76	52	28	54	11	11	3	5.7	3	5	5.5 x 3	0.8	1.6
20	181	2400	4100	75	98	85	55	84	57	34	59	10.5	10.5	3	5.7	3.5	6	5.5 x 4	0.8	1.9
25	288	1600	3800	90	118	104	68	99	60	35	62	11.5	11.5	3	6.8	4	8	6.6 x 4	1	2.9
30	500	1300	2800	100	128	114	75	109	68	43	70	11.5	11.5	3	6.8	4	8	6.6 x 6	1	3.9
35	725	1200	2600	110	140	124	80	119	74	45	76	13.5	13	3.5	6.8	5	10	6.6 x 6	1	4.9
40	1025	850	2300	125	160	142	90	135	86	53	88	15.5	15	3.5	9	5	12	9 x 6	1.5	7.5
45	1125	740	2200	130	165	146	95	140	86	53	88	15.5	15	3.5	9	5.5	14	9 x 8	1.5	7.8
50	2125	580	1950	150	185	166	110	160	94	64	96	14	13	4	9	5.5	14	9 x 8	1.5	10.8
55	2625	550	1800	160	204	182	115	170	104	66	106	18	17	4	11	6	16	11 x 8	2	14
60	3500	530	1700	170	214	192	125	182	114	78	116	17	16	4	11	7	18	11 x 10	2	16.8
70	5750	500	1600	190	234	212	140	202	134	95	136	18.5	17.5	4	11	7.5	20	11 x 10	2.5	20.8
80	8500	480	1500	210	254	232	160	222	144	100	146	21	20	4	11	9	22	11 x 10	2.5	27
90	14500	420	1300	230	278	254	180	242	158	115	160	20.5	19	4.5	13	9	25	14 x 10	3	40
100	20000	310	1100	270	335	305	210	282	182	120	184	30	28	5	17.5	10	28	18 x 10	3	67
130	31250	220	900	310	380	345	240	322	212	152	214	29	27	5	17.5	11	32	18 x 12	3	94
150	70000	170	700	400	485	445	310	415	246	180	248	32	30	5	21.5	12	36	22 x 12	4	187

Notes :

- 1) Function : Overrunning, Backstopping, Indexing
- 2) T_{max} = 2 x T_n.
- 3) The maximum Overrunning speeds are for Oil lubrication only.
- 4) Shaft dia. is to be controlled within h6/j6.

- 5) Keyway as per DIN 6885 - 1.
- 6) Other sizes on request.
- 7) All dimensions are in m.m.
- 8) We manufacturing in inch series also.

Ordering Example :

- When ordering please specify bore dia. with direction of Rotation of inner race freewheeling seen from Arrow, CW for Clockwise & CCW for Anti-clockwise.
- **NR C1C4 50 - 50 CW**

Dimensions/Design subject to modifications without any prior intimation.

DISTRIBUTED BY



chainanddrives.com.au

support@chainanddrives.com.au