

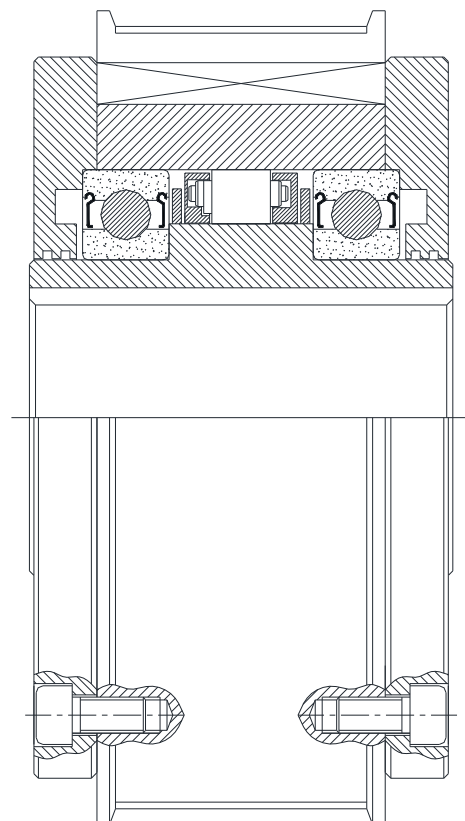
## NHBU-K E6E6

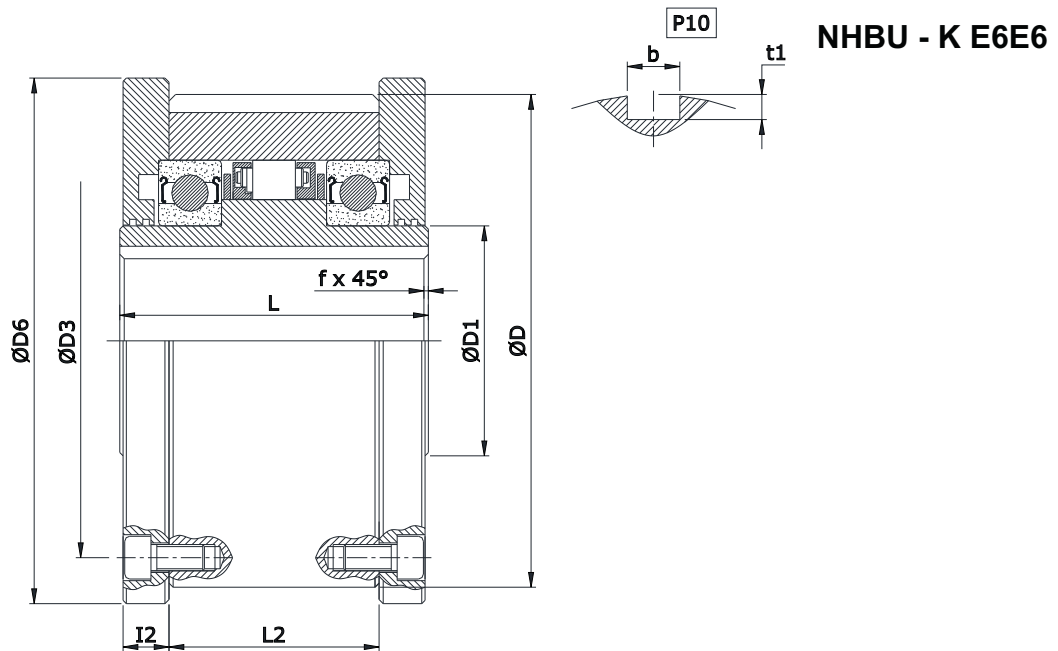


### ❖ Features:

- This type of Freewheel Clutch is designed with ball bearings to be assembled with customer connecting parts
- Requires grease Lubrication
- Fix the grease nipple to the option parts
- Component mounted onto the Outside diameter of Outer race should be bored to H7 Tolerance.
- This type of Combination is used as Overrunning & Backstopping in which E6 cover as an End flange covers.
- Bore range : up to 150 mm
- Transmitting torque : 33908 Nm

### ◆ Mounting Example:





Model	Bore (d)		Inner race Overrunning		Nominal torque Nm	D (h7) mm	D6 mm	D3 mm	D1 mm	L mm	L2 mm	I2 mm	t1 mm	b P10 mm	f mm	Weight Kg
	max. mm	Min. RPM	Max. RPM													
NHBU 30K - E6E6	30	750	5000	607	100	109	87	45	81	56	11.5	4.0	8	1.0	3.9	
NHBU 35K - E6E6	35	730	5000	686	110	119	96	50	81	56	11.5	5.0	10	1.0	4.9	
NHBU 40K - E6E6	40	720	5000	980	125	135	108	55	93	60	15.5	5.0	12	1.3	7	
NHBU 45K - E6E6	45	700	5000	1078	130	140	112	60	93	60	15.5	5.5	14	1.3	7.4	
NHBU 50K - E6E6	50	630	5000	1715	150	160	132	70	95	62	15.5	5.5	14	1.3	10.7	
NHBU 55K - E6E6	55	630	5000	1960	160	170	138	75	104	66	18	6.0	16	1.5	13.6	
NHBU 60K - E6E6	60	430	6000	3479	170	182	150	80	120	84	17	7.0	18	1.5	17.3	
NHBU 70K - E6E6	70	400	4500	4735	190	202	165	90	134	95	18	7.5	20	1.8	23.5	
NHBU 80K - E6E6	80	320	4000	6517	210	222	185	105	144	100	20	9.0	22	1.8	31.3	
NHBU 90K - E6E6	90	320	3500	8526	230	242	206	120	158	115	20	9.0	25	2.0	38.4	
NHBU 100K - E6E6	100	250	2700	14210	270	282	240	140	186	124	28	10.0	28	2.0	63	
NHBU 130K - E6E6	130	240	2100	20384	310	322	278	160	212	152	28	11.0	32	2.5	88	
NHBU 150K - E6E6	150	220	3000	33908	400	412	360	200	246	180	30	12.0	36	2.5	184	

### Notes :

- 1) Function : Overrunning, Backstopping
- 2)  $T_{max} = 2 \times T_n$ .
- 3) Oil / Grease filled, ready to fit.
- 4) Shaft dia. is to be controlled within h6/j6
- 5) Keyway as per DIN 6885 - 1.
- 6) Other sizes on request.
- 7) All dimensions are in mm.
- 8) We manufacturing in inch series also.
- 9) Dimensions/Design subject to modifications.

### Ordering Example :

- When ordering please specify bore dia. with direction of Rotation of Inner race freewheeling seen from Arrow, CW for Clockwise & CCW for Anti-clockwise.
- When ordering please specify bore dia.:
- **NHBU -35K - E6E6 - 20**

DISTRIBUTED BY



[chainanddrives.com.au](http://chainanddrives.com.au)  
[support@chainanddrives.com.au](mailto:support@chainanddrives.com.au)