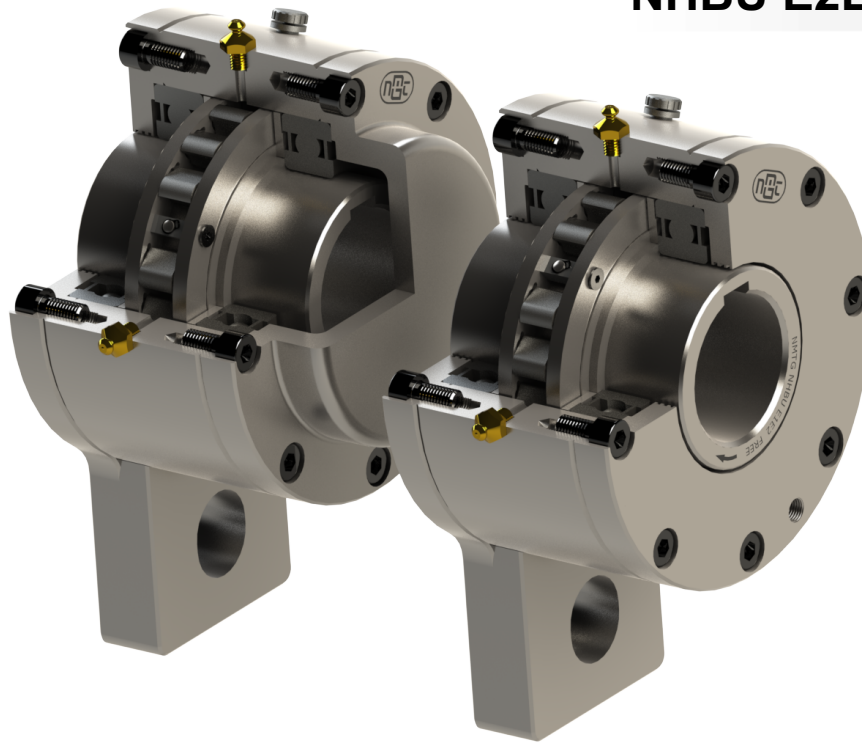


**External Holdback / Backstop Clutch
NHBU E2E3 & E1E2**



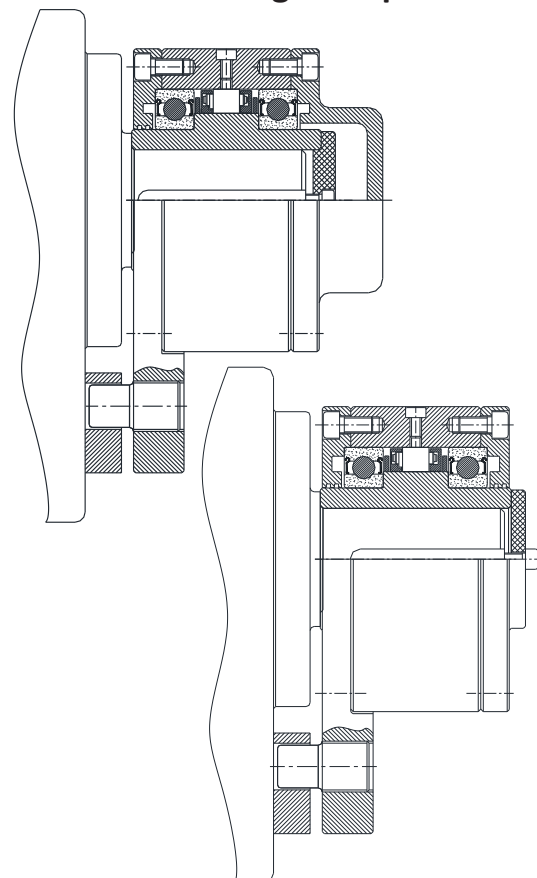
NHBU E2E3

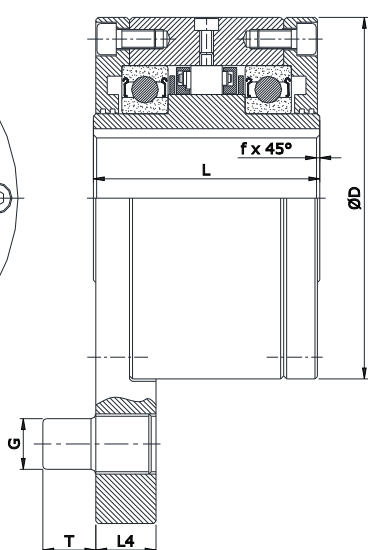
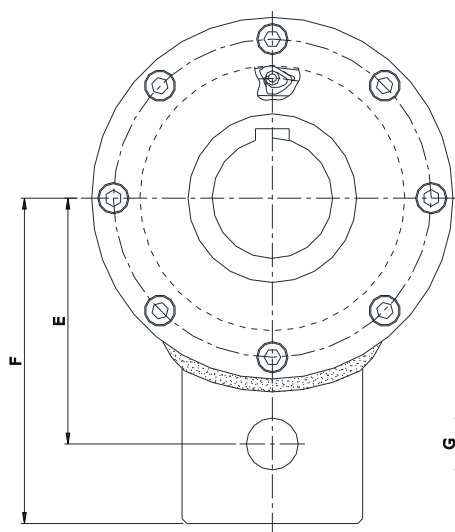
NHBU E1E2

❖ **Features:**

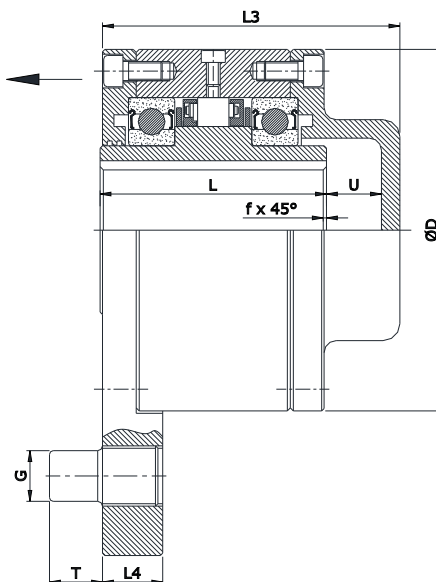
- This type of Freewheel Clutches are designed with ball bearings to be assembled with customer connecting parts
- Requires grease Lubrication
- This type of Combinations are used as Backstopping in which E2 cover as a Torque arm / Lever arm which has an integrated Stop bolt which must go into a slot in a fixed part of machine.
- If E3 type C - cover is used then sealant must be provided to the keyway to avoid loss of Lubrication through it.
- This type of combinations are arranged on through shafts or shaft ends.
- Bore range : up to 150 mm
- Transmitting torque : 33908 Nm

◆ **Mounting Example:**





NHBU E1E2



NHBU E2E3

| Model | Bore (d) | | Inner race Overrunning | | Nominal torque Nm | D (h7) mm | E mm | F mm | L mm | U mm | L3 mm | L4 mm | T mm | G mm | f mm | Weight of | |
|-----------------------|----------|---------|------------------------|----------|-------------------|-----------|------|------|------|-------|-------|-------|------|------|------|-----------|----------|
| | max. mm | Min. mm | Min. RPM | Max. RPM | | | | | | | | | | | | E1+E2 Kg | E1+E3 Kg |
| NHBU 30 E1 + E2 / E3 | 30 | 750 | 5000 | 607 | 100 | 68 | 92 | 81 | 10 | 97 | 19 | 14 | 16 | 1.0 | 4.2 | 4.5 | |
| NHBU 35 E1 + E2 / E3 | 35 | 730 | 5000 | 686 | 110 | 76 | 102 | 81 | 12 | 102 | 22 | 18 | 20 | 1.0 | 5 | 5.3 | |
| NHBU 40 E1 + E2 / E3 | 40 | 720 | 5000 | 980 | 125 | 85 | 112 | 93 | 12 | 112 | 22 | 18 | 20 | 1.3 | 7 | 7.4 | |
| NHBU 45 E1 + E2 / E3 | 45 | 700 | 5000 | 1078 | 130 | 90 | 120 | 93 | 15 | 115 | 25 | 22 | 25 | 1.3 | 7.7 | 8.1 | |
| NHBU 50 E1 + E2 / E3 | 50 | 630 | 5000 | 1715 | 150 | 102 | 135 | 95 | 12 | 114 | 25 | 22 | 25 | 1.3 | 11 | 11.5 | |
| NHBU 55 E1 + E2 / E3 | 55 | 630 | 5000 | 1960 | 160 | 108 | 142 | 104 | 15 | 126 | 30 | 25 | 32 | 1.5 | 14 | 15.6 | |
| NHBU 60 E1 + E2 / E3 | 60 | 430 | 6000 | 3479 | 170 | 112 | 145 | 120 | 15 | 143 | 30 | 25 | 32 | 1.5 | 17.2 | 18 | |
| NHBU 70 E1 + E2 / E3 | 70 | 400 | 4500 | 4735 | 190 | 135 | 175 | 134 | 22.5 | 164.5 | 35 | 30 | 38 | 1.8 | 24.5 | 25.5 | |
| NHBU 80 E1 + E2 / E3 | 80 | 320 | 4000 | 6517 | 210 | 145 | 185 | 144 | 16 | 168 | 35 | 30 | 38 | 1.8 | 31.9 | 32.9 | |
| NHBU 90 E1 + E2 / E3 | 90 | 320 | 3500 | 8526 | 230 | 155 | 205 | 158 | 27 | 192 | 45 | 40 | 50 | 2.0 | 41.1 | 43.4 | |
| NHBU 100 E1 + E2 / E3 | 100 | 250 | 2700 | 14210 | 270 | 180 | 230 | 186 | 28 | 221 | 45 | 40 | 50 | 2.0 | 65 | 67 | |
| NHBU 130 E1 + E2 / E3 | 130 | 240 | 2100 | 20384 | 310 | 205 | 268 | 212 | 30 | 250 | 60 | 55 | 68 | 2.5 | 94 | 97 | |
| NHBU 150 E1 + E2 / E3 | 150 | 220 | 3000 | 33908 | 400 | 255 | 325 | 246 | 32 | 286 | 60 | 55 | 68 | 2.5 | 190 | 193 | |

Notes :

- 1) Function : Overrunning, Backstopping
- 2) Tmax = 2 x Tn.
- 3) Oil / Grease filled, ready to fit.
- 4) Shaft dia. is to be controlled within h6/j6

- 5) Keyway as per DIN 6885 - 1.
- 6) Other sizes on request.
- 7) All dimensions are in mm.
- 8) We manufacturing in inch series also.
- 9) Dimensions/Design subject to modifications.
- 10) Hold pin is in Customer's scope.

Ordering Example :

- When ordering please specify bore dia. with direction of Rotation of Inner race freewheeling seen from Arrow, CW for Clockwise & CCW for Anti-clockwise.
- When ordering please specify bore dia.:
- NHBU 35 E1E2 - 20
- NHBU 35 E2E3 - 20

DISTRIBUTED BY



Dimensions/Design subject to modifications without any prior intimation.