

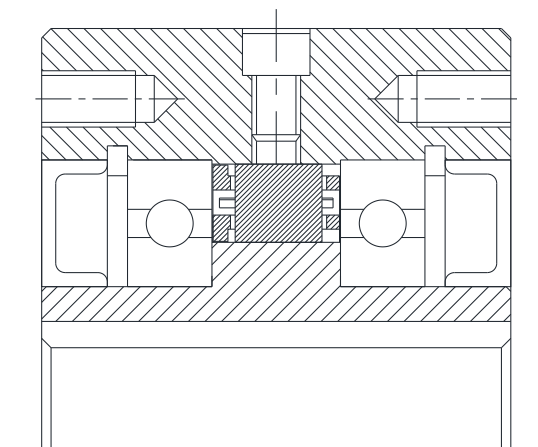
Sprag Type Freewheel Cage Assembly NDC Model



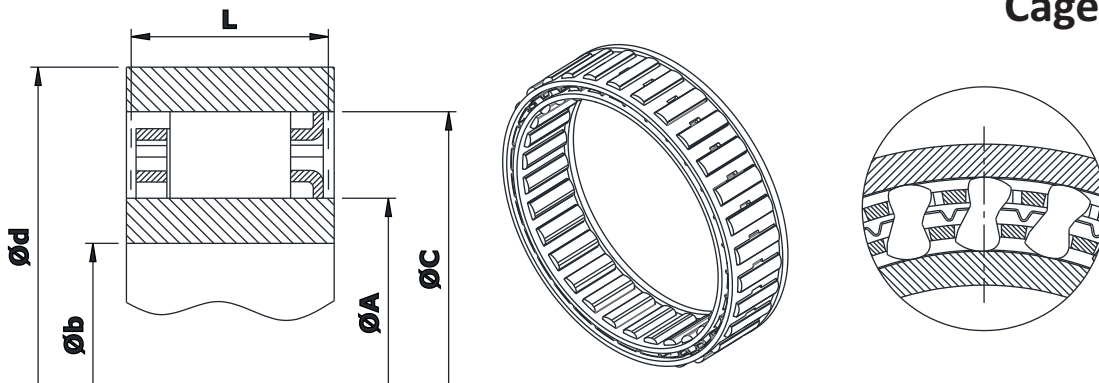
❖ Features:

- This NDC type Cage assembly is without Inner or Outer races.
- NDC type cage assembly must be installed in a Design providing races, bearing support for axial & radial loads, Lubrication & Sealing.
- Required Oil or Grease both type of Lubrications.
- Alternatively, races can be made in case hardened steel shafts, or housings, to the specification below.
- Surface Hardness of Finished part - 60 to 62 HRC for minimum 0.6 mm depth.
- Core hardness to be 35 to 45 HRC, Surface roughness not to exceed $0.8 \mu\text{m}$, Maximum taper between races - 0.007 mm for 25 mm width.

◆ Mounting Example:



NDC
Cage Assembly



Size	Nominal Torque Nm	Overrunning Speed RPM		$\phi A + 0.008$ $- 0.005$ mm	$\phi C \pm 0.013$ mm	Sprag size mm	L min. mm	ϕd min. mm	ϕb max. mm	No. of Clips	No. of Sprags	Weight kg
		Ninner max.	Nouter max.									
NDC 2222G	63	8600	4300	22.225	38.885	8.33 ± 0.075	10.0	50	15	-	12	0.030
NDC 2776	119	6900	3400	27.762	44.422	8.33 ± 0.075	13.5	58	18	-	14	0.055
NDC 3034	124	6300	3100	30.340	47.000	8.33 ± 0.075	13.5	62	20	-	14	0.060
NDC 3175(C)	159	6000	3000	31.750	48.410	8.33 ± 0.075	13.5	63	21	3	16	0.060
NDC 3809A	275	5000	2500	38.092	54.752	8.33 ± 0.075	16.0	71	25	-	18	0.085
NDC 4127(C)	224	4600	2300	41.275	57.935	8.33 ± 0.075	13.5	75	27	3	18	0.090
NDC 4445A	363	4300	2100	44.450	61.110	8.33 ± 0.075	16.0	79	29	-	20	0.095
NDC 4972(C)	306	3800	1900	49.721	66.381	8.33 ± 0.075	13.5	86	33	4	22	0.100
NDC 5476A	525	3500	1700	54.765	71.425	8.33 ± 0.075	16.0	92	36	-	24	0.110
NDC 5476A (C)	525	3500	1700	54.765	71.425	8.33 ± 0.075	16.0	92	36	4	24	0.130
NDC 5476B (C)	769	3500	1700	54.765	71.425	8.33 ± 0.075	21.0	92	36	4	24	0.180
NDC 5476C (C)	990	3500	1700	54.765	71.425	8.33 ± 0.075	25.4	92	36	4	24	0.200
NDC 5776A	604	3300	1600	57.760	74.420	8.33 ± 0.075	16.0	98	38	-	26	0.110
NDC 6334B	806	3000	1500	63.340	80.000	8.33 ± 0.075	21.0	104	42	-	26	0.175
NDC 7221(C)	675	2600	1300	72.217	88.877	8.33 ± 0.075	13.5	115	48	5	30	0.140
NDC 7221B	1279	2600	1300	72.217	88.877	8.33 ± 0.075	21.0	115	48	-	30	0.185
NDC 7221B (C)	1279	2600	1300	72.217	88.877	8.33 ± 0.075	21.0	115	48	5	30	0.210
NDC 7969C (C)	2038	2400	1200	79.698	96.358	8.33 ± 0.075	25.4	124	53	5	34	0.280
NDC 8334C	2055	2300	1100	83.340	100.000	8.33 ± 0.075	25.4	132	55	-	34	0.270
NDC 8729A	1250	2200	1100	87.290	103.960	8.33 ± 0.075	16.0	134	58	-	34	0.165
NDC 10323A (C)	1612	1800	900	103.231**	119.891	8.33 ± 0.075	16.0	155	68	5	40	0.205
NDC 12334C	4800	1500	750	123.340**	140.000	8.33 ± 0.075	25.4	184	80	-	50	0.400

Notes :

- 1) Function : Overrunning, Indexing, Backstopping
- 2) Tmax = 2 x Tn.
- 3) Oil / Grease filled, ready to fit.

- 4) Other sizes on request.
- 5) All dimensions are in mm.
- 6) We manufacturing in inch series also.
- 7) ** Extension of Tolerance to ± 0.013 permissible.

Ordering Example :

➤ NDC 2222

DISTRIBUTED BY

