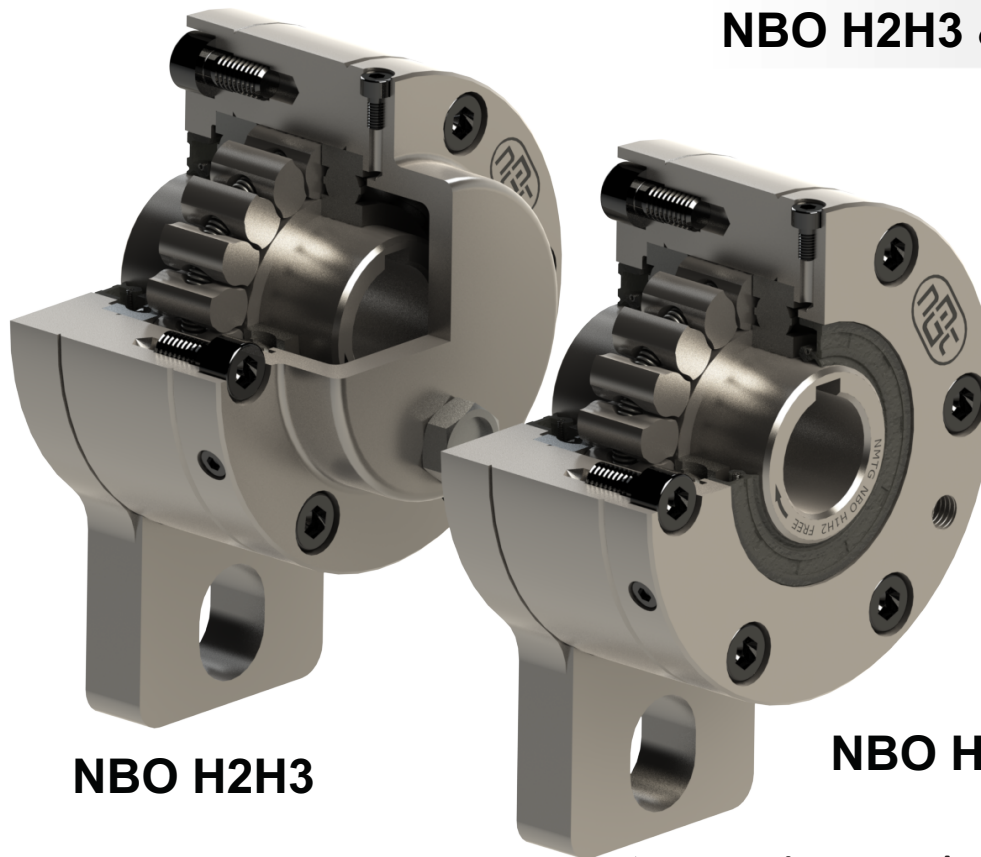


**External Holdback / Backstop Clutch
NBO H2H3 & H1H2**



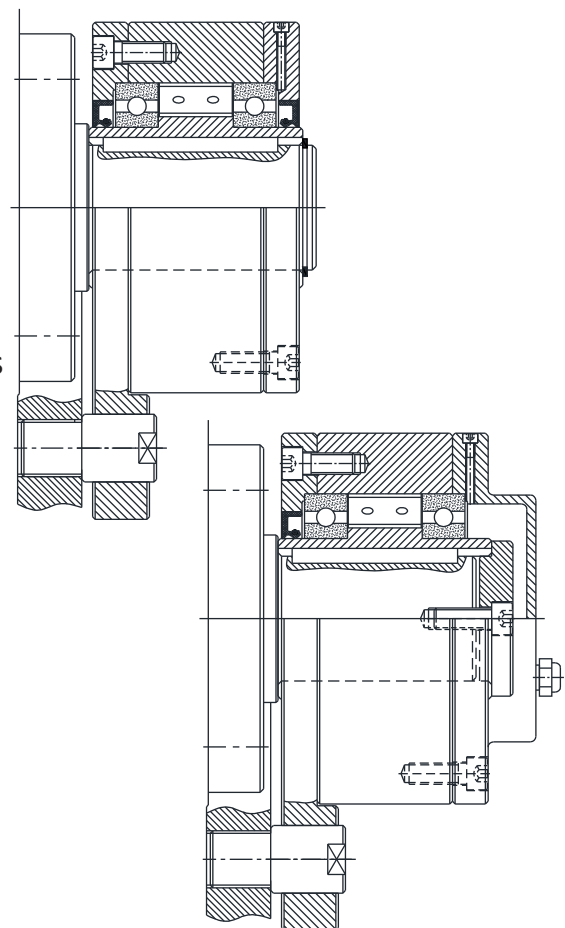
NBO H2H3

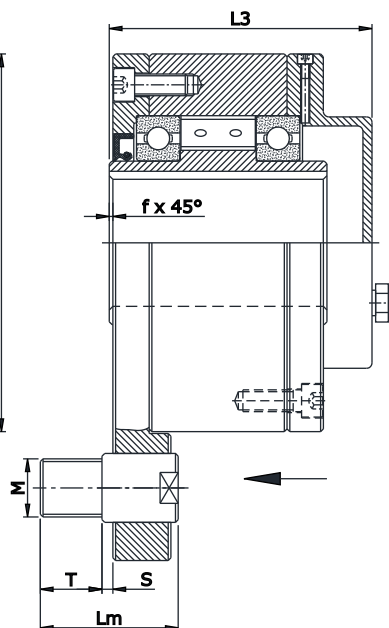
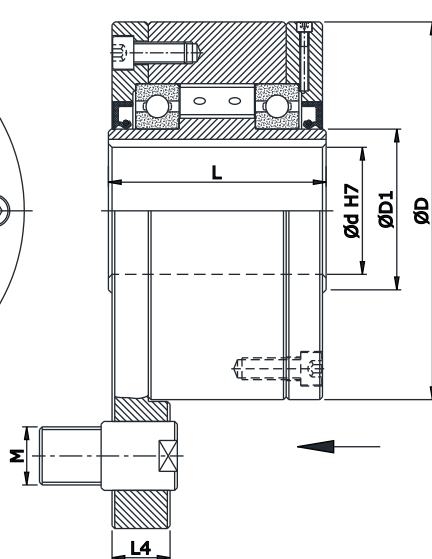
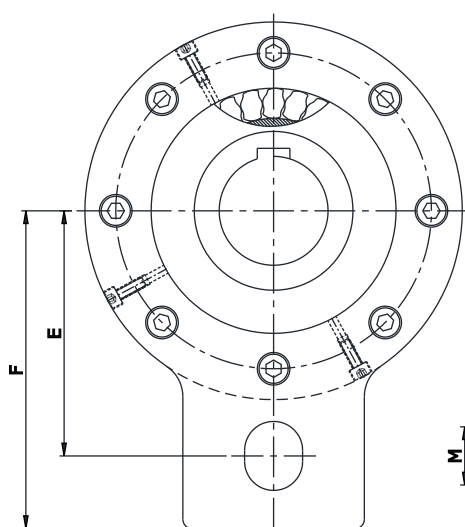
NBO H1H2

❖ **Features:**

- This type of Freewheel Clutch is designed by means of Oil sealing & ball bearings supported.
- This type of Combinations are used as Backstops, in which H2 Cover act as Lever arm & H1 as End Cover.
- H2 Cover also called as Torque arm which has an integrated Stop bolt which must go into a slot in a fixed part of Machine.
- This type of Combinations are arranged on through shafts or shaft ends.
- If H3 type C-cover is used then sealant must be provided to the keyway to avoid loss of lubrication through it.
- Requires Oil / Grease Lubrication.
- Bore range: up to 300 mm.
- Transmitting torque: 160000 Nm.

◆ **Mounting Example:**





NBO H1H2

NBO H2H3

Model	Bore d		Max. Overrunning		Nominal Torque (Tn) Nm	D mm	D1 mm	F mm	E mm	L mm	L4 mm	Lm mm	L3 mm	S mm	T mm	M	f mm	Weight (approx.)	
	Std. mm	Max. mm	Inner RPM	Outer RPM														H1H2 kg	H2H3 kg
NBO 37	20	22*	2500	2600	200	85	30	84	62	48	18	46	73	5	20	M16	1	1.9	2.5
NBO 44	25*	25*	1900	2200	320	95	35	92	68	50	18	56	77	5	25	M20 x 2	1	2.5	3.4
NBO 57	30	32*	1400	1750	630	112	45	102	76	65	25	56	93	6	25	M20 x 2	1	4.1	5.1
NBO 72	40	42*	1120	1600	1250	132	55	120	90	74	25	62	103	6	30	M24 x 2	1.5	6.4	7.8
NBO 82	50*	50*	1025	1450	1800	145	65	135	102	75	25	75	104	6	35	M30 x 2	1.5	7.7	9.4
NBO 107	60	65*	880	1250	2500	170	80	145	112	90	30	75	123	6	35	M30 x 2	2	13.8	16.1
NBO 127	70	75*	800	1150	5000	204	95	185	145	112	35	105	146	6	50	M40 x 2	2.5	22.5	26.6
NBO 140	90	95*	750	1100	10000	254	120	230	180	150	45	135	185	8	60	M52 x 2	3	55.5	58.4
NBO 200	120	120	630	900	20000	320	160	268	205	160	60	140	198	8	65	M60 x 2	3	81	88
NBO 270	140	150	510	750	40000	420	200	375	300	212	75	165	240	8	75	M72 x 2	4	201	207
NBO 340	180	240	460	630	80000	497	300	425	340	265	90	165	335	8	75	M72 x 2	4	316	350
NBO 440	220	300	400	550	160000	627	380	520	420	315	110	200	400	8	75	M72 x 2	5	587	655

Notes :

- 1) Function : Overrunning, Backstopping, Indexing
- 2) Tmax = 2 x Tn.
- 3) Oil / Grease filled, ready to fit.
- 4) Shaft dia. is to be controlled within h6/j6

- 5) *Sizes are with Keyway to DIN 6885 - P3.
- 6) Other sizes on request.
- 7) All dimensions are in mm.
- 8) We manufacturing in inch series also.
- 9) Hold pin is in Customer's scope.

DISTRIBUTED BY

