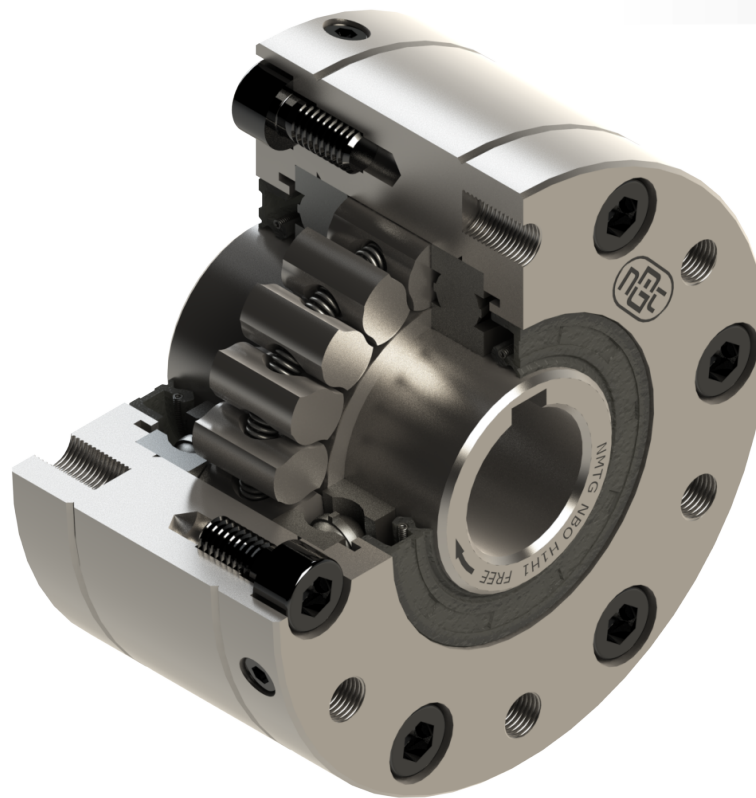


Freewheel One way clutch / Backstop Clutch

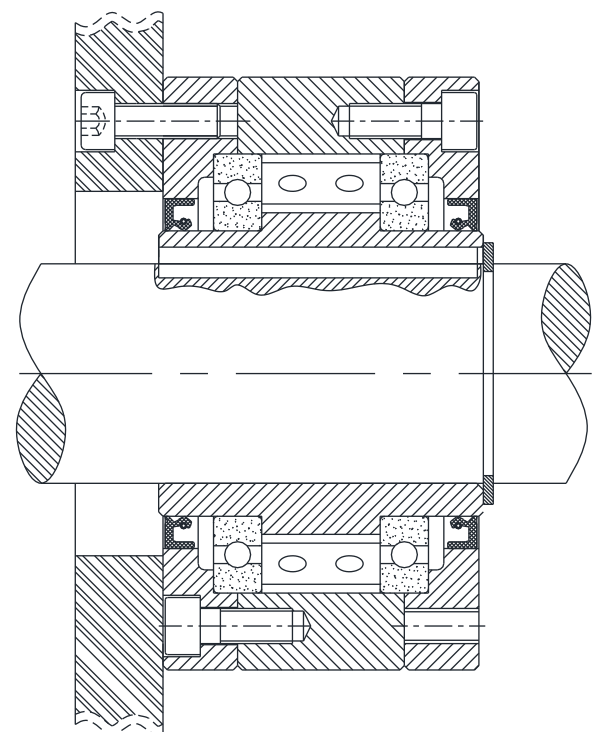
NBO H1H1

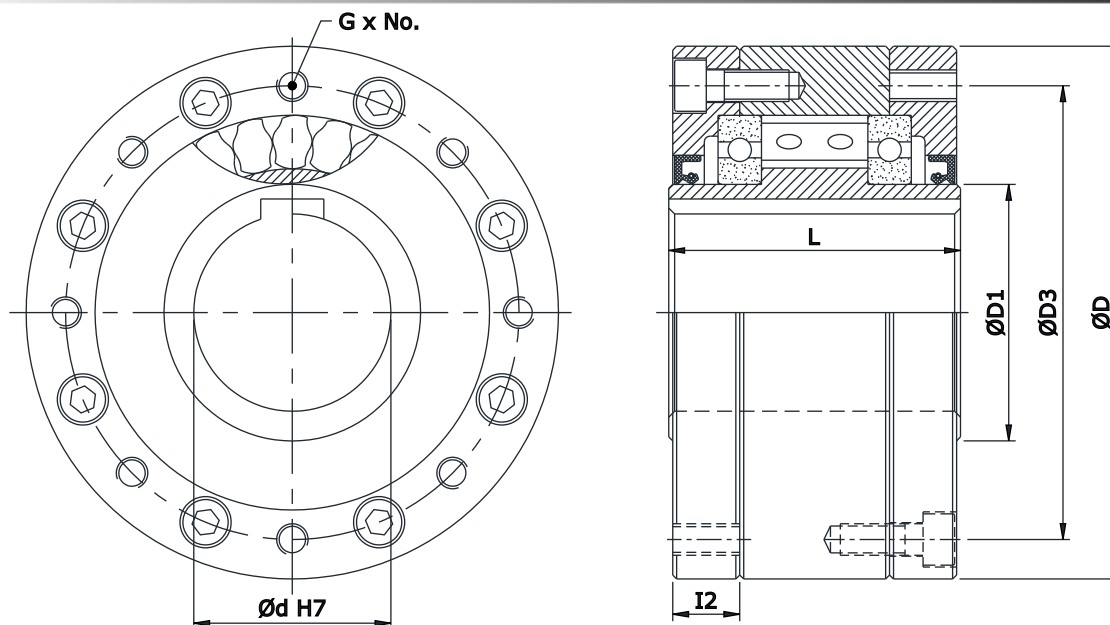


❖ Features :

- This type of Freewheels are Sealed & Fitted with Ball bearings & Oil seals.
- This type of clutch have both side H1 as End Cover.
- Outer race end faces have Tapped Holes for attachment of items such as Coupling, Sprocket, Pulley, etc.
- Oil lubricated suitable for Overrunning, backstopping and medium Duty indexing (up to 150 indexes/minute).
- Grease lubrication is available where high inner race overrunning speeds are required or maintenance is difficult.
- Requires Oil / Grease Lubrication.
- Bore range: up to 300 mm.
- Transmitting torque: 160000 Nm.

◆ Mounting Example:





### NBO H1H1

Model	Bore d		Max. Overrunning		Nominal Torque (Tn) Nm	D mm	L mm	D1 mm	D3 mm	I2 mm	G x No.	Weight Kg
	Standard mm	Max. mm	Inner RPM	Outer RPM								
NBO 37	20	22*	2500	2600	200	85	48	30	70	11.5	M6 x 4	1.6
NBO 44	25*	25*	1900	2200	320	95	50	35	80	11.5	M6 x 6	2.3
NBO 57	30	32*	1400	1750	630	112	65	45	95	13.5	M6 x 6	3.7
NBO 72	40	42*	1120	1600	1250	132	74	55	115	15.5	M8 x 8	5.9
NBO 82	50*	50*	1025	1450	1800	145	75	65	125	14	M8 x 8	7.0
NBO 107	60	65*	880	1250	2500	170	90	80	150	17	M10 x 10	12.9
NBO 127	70	75*	800	1150	5000	204	112	95	180	21	M10 x 10	20.7
NBO 140	90	95*	750	1100	10000	254	150	120	225	30	M16 x 10	51.7
NBO 200	120	120	630	900	20000	320	160	160	288	29	M16 x 12	75.5
NBO 270	140	150	510	750	40000	420	212	200	370	53	M20 x 12	185
NBO 340	180	240	460	630	80000	497	265	300	450	66	M20 x 18	294
NBO 440	220	300	400	550	160000	627	315	380	560	78	M24 x 18	550

**Notes :**

- 1) Function : Overrunning, Backstopping, Indexing
- 2) Tmax = 2 x Tn.
- 3) Oil / Grease filled, ready to fit.
- 4) Shaft dia. is to be controlled within h6/j6

- 5) \*Sizes are with Keyway to DIN 6885 - P3.
- 6) Other sizes on request.
- 7) All dimensions are in mm.
- 8) We manufacturing in inch series also.

DISTRIBUTED BY

