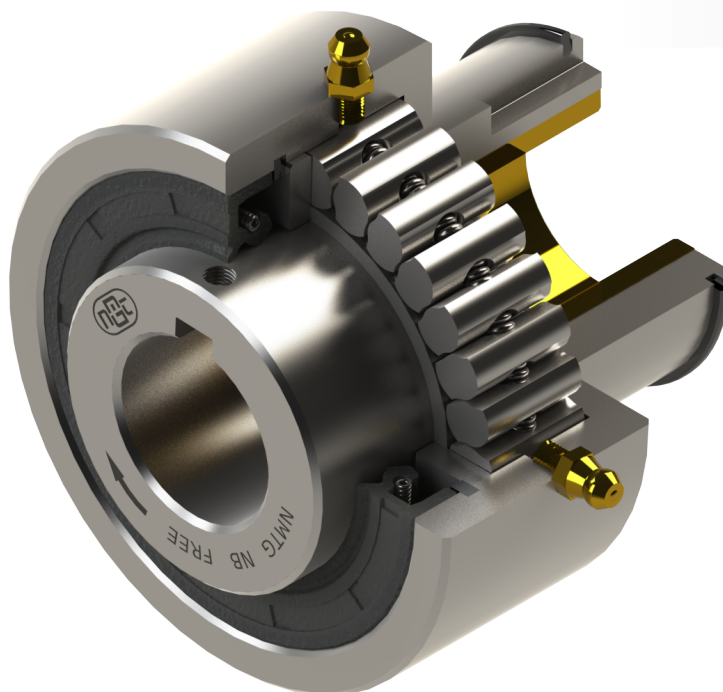


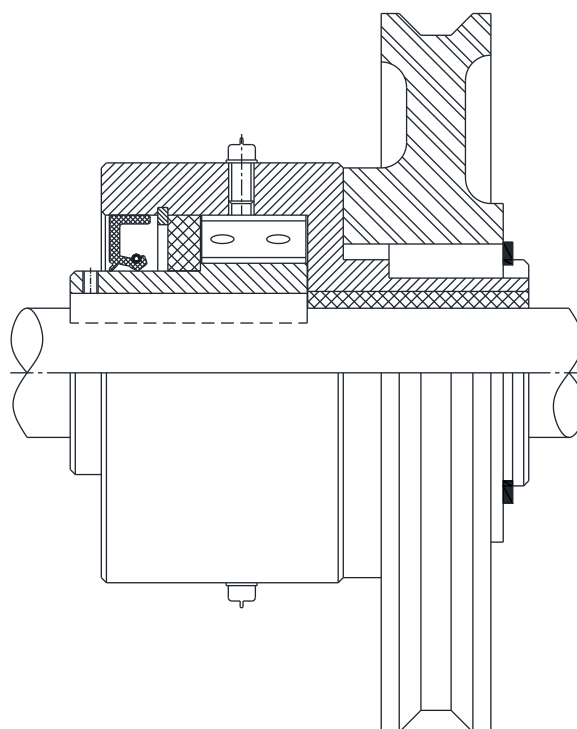
**Freewheel One way clutch / Backstop Clutch
NB Model**

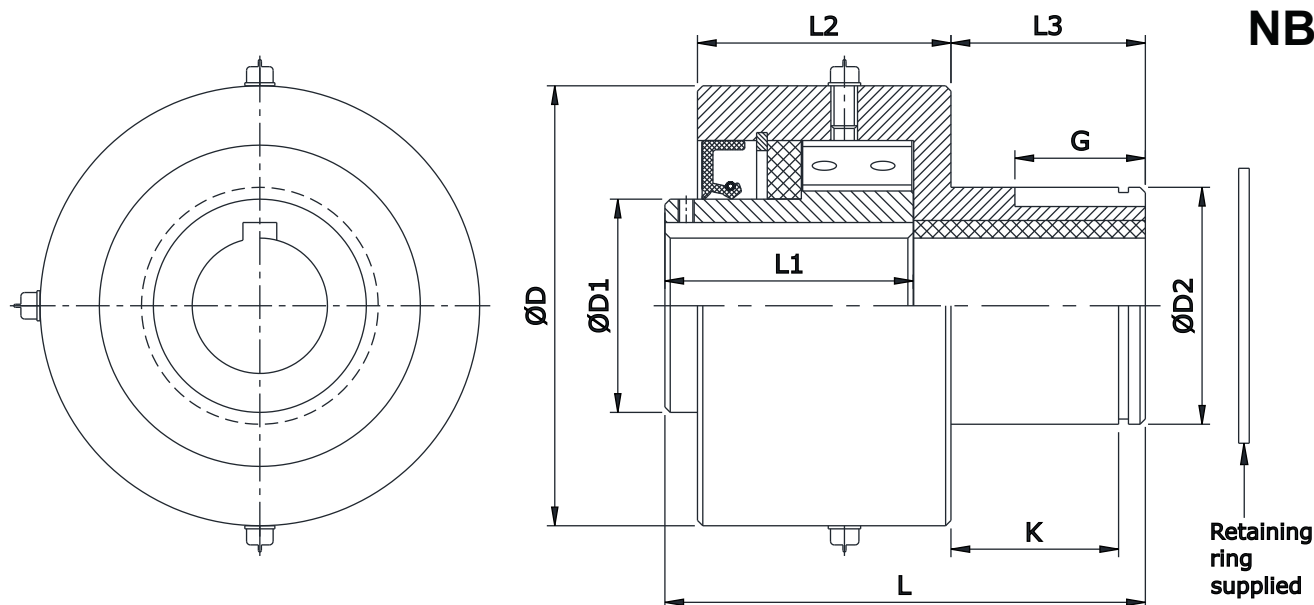


❖ **Features:**

- This type of Clutch is supplied with extended Spigot at one side to allow direct mounting of Customer connecting parts.
- A sleeve inside the extended spigot give greater support, thus adding Strength.
- Requires Grease Lubrication
- Bore range: up to 50 mm
- Transmitting torque: 2170 Nm

◆ **Mounting Example:**





Model	L mm (in)	D mm (in)	D2 (max) mm (in)	D2 (min) mm (in)	L2 mm (in)	D1 mm	L3 mm (in)	G mm (in)	L1 mm (in)	K (min) mm (in)	Hub Keyway Size mm (in)
NB 3	47.62 (1.88)	47.00 (1.85)	22.23 (0.875)	22.20 (0.874)	19.81 (0.78)	20.00	20.64 (0.81)	12.70 (0.50)	23.80 (0.94)	16.74 (0.66)	3.175 x 1.58 (1/8 x 1/16)
NB 5	69.85 (2.75)	50.80 (2.00)	31.75 (1.250)	31.72 (1.249)	31.75 (1.25)	25.00	25.40 (1.00)	14.27 (0.56)	41.27 (1.63)	21.13 (0.83)	4.762 x 2.38 (3/16 x 3/32)
NB 6	80.95 (3.19)	73.03 (2.88)	34.93 (1.375)	34.90 (1.374)	39.67 (1.56)	35.00	33.32 (1.31)	23.80 (0.94)	42.85 (1.69)	29.13 (1.15)	4.76 x 2.38 (3/16 x 3/32)
NB 8	90.22 (3.55)	82.55 (3.25)	44.45 (1.750)	44.42 (1.749)	47.60 (1.87)	40.00	36.50 (1.44)	24.50 (0.96)	47.62 (1.88)	31.47 (1.24)	6.35 x 3.175 (1/4 x 1/8)

Model	Bore dia.		Torque Capacity (Tn) Nm (lb-ft)	Overrunning		Weight Kg (lb)
	d (H7) mm	d (H7) inch		Inner Race RPM	Outer Race RPM	
NB 3	10	0.375 0.500	54 (40)	1950	900	0.28 (0.62)
NB 5	16	0.500 0.625	115 (85)	1950	900	0.6 (1.32)
NB 6	18	0.750	372 (275)	1950	750	1.36 (3.00)
NB 8	25	0.875 1.000	542 (400)	1650	600	1.93 (4.25)

Notes :

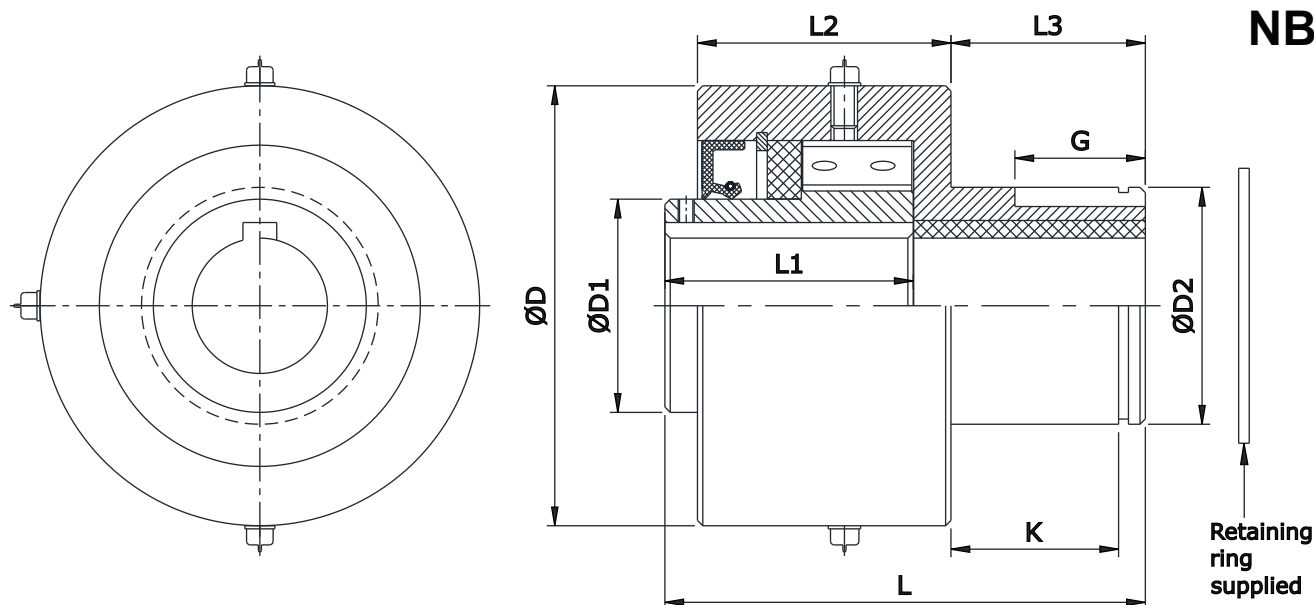
- 1) Function : Overrunning, Backstopping, Indexing
- 2) Tmax = 2 x Tn.
- 3) Oil / Grease filled, ready to fit.
- 4) Shaft dia. is to be controlled within h6

- 5) Keyway as per DIN 6885 - 1.
- 6) Other sizes on request.

Ordering Example :

- When ordering please specify bore dia.
- NB 3 - 10

Dimensions/Design subject to modifications without any prior intimation.



Model	L mm (in)	D mm (in)	D2 (max) mm (in)	D2 (min) mm (in)	L2 mm (in)	D1 mm	L3 mm (in)	G mm (in)	L1 mm (in)	K (min) mm (in)	Hub Keyway Size mm (in)
NB 10	88.90 (3.50)	95.25 (3.75)	57.15 (2.250)	57.12 (2.249)	44.45 (1.75)	55.00	36.50 (1.44)	23.80 (0.94)	46.02 (1.81)	32.11 (1.26)	7.938 x 3.96 (5/16 x 5/32)
NB 12	98.42 (3.87)	112.71 (4.44)	63.50 (2.500)	63.47 (2.499)	52.40 (2.06)	60.00	36.50 (1.44)	30.15 (1.19)	53.97 (2.13)	30.61 (1.21)	9.525 x 4.763 (3/8 x 3/16)
NB 14	111.18 (4.38)	139.70 (5.50)	73.03 (2.875)	73.00 (2.874)	55.56 (2.19)	75.00	44.45 (1.75)	34.14 (1.34)	57.15 (2.25)	39.34 (1.55)	11.113 x 5.555 (7/16 x 7/32)
NB 16	111.18 (4.38)	139.70 (5.50)	82.55 (3.250)	85.52 (3.249)	55.56 (2.19)	75.00	44.45 (1.75)	36.50 (1.44)	57.15 (2.25)	39.67 (1.56)	11.113 x 5.555 (7/16 x 7/32)

Model	Bore dia.		Torque Capacity (Tn) Nm (lb-ft)	Overrunning		Weight Kg (lb)
	d (H7) mm	d (H7) inch		Inner Race RPM	Outer Race RPM	
NB 10	30 32	1.125 1.250	881 (650)	1250	350	2.44 (5.38)
NB 12	28 38	1.375 1.500	1760 (1300)	1150	350	3.91 (8.62)
NB 14	38 45	1.625 1.750	1970 (1450)	950	250	6.32 (13.90)
NB 16	50	1.875 2.000	2170 (1600)	950	250	6.35 (14.00)

Notes :

- 1) Function : Overrunning, Backstopping, Indexing
- 2) Tmax = 2 x Tn.
- 3) Oil / Grease filled, ready to fit.
- 4) Shaft dia. is to be controlled within h6
- 5) Keyway as per DIN 6885 - 1.
- 6) Other sizes on request.

DISTRIBUTED BY

