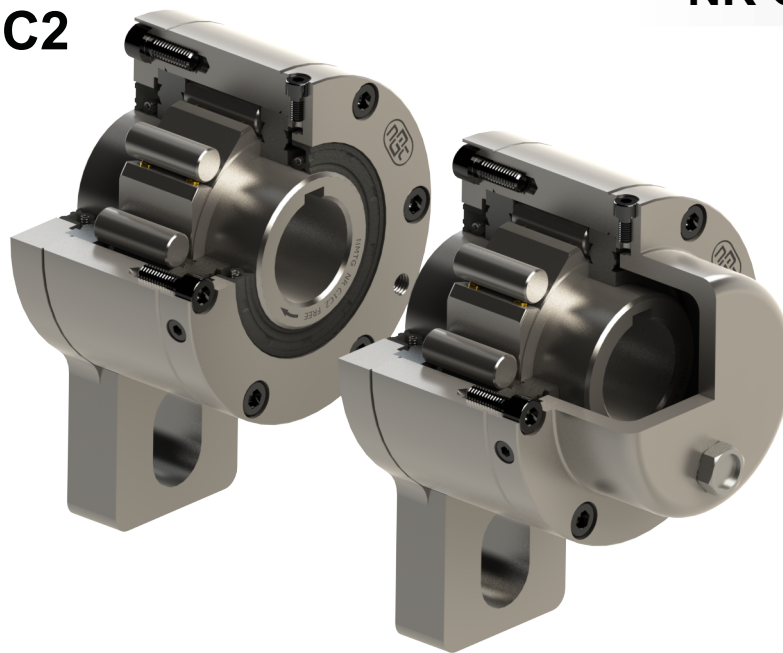


External Holdback / Backstop Clutch

NR C1C2 & C2C3

NR C1C2

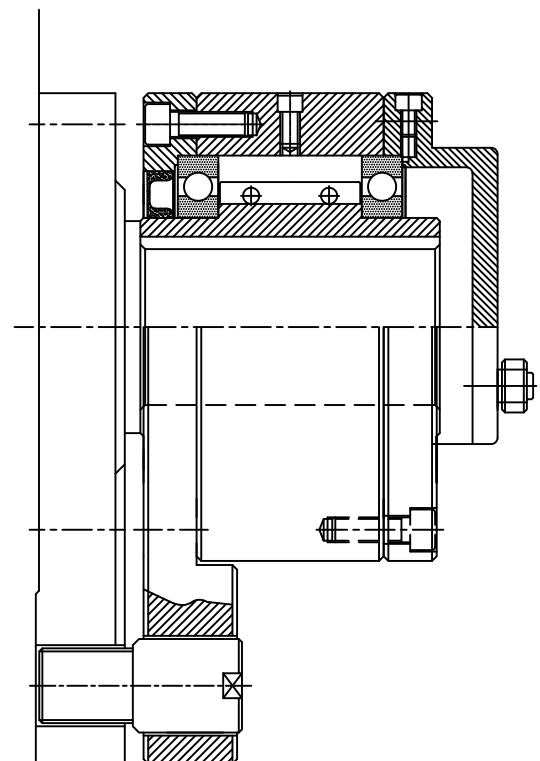


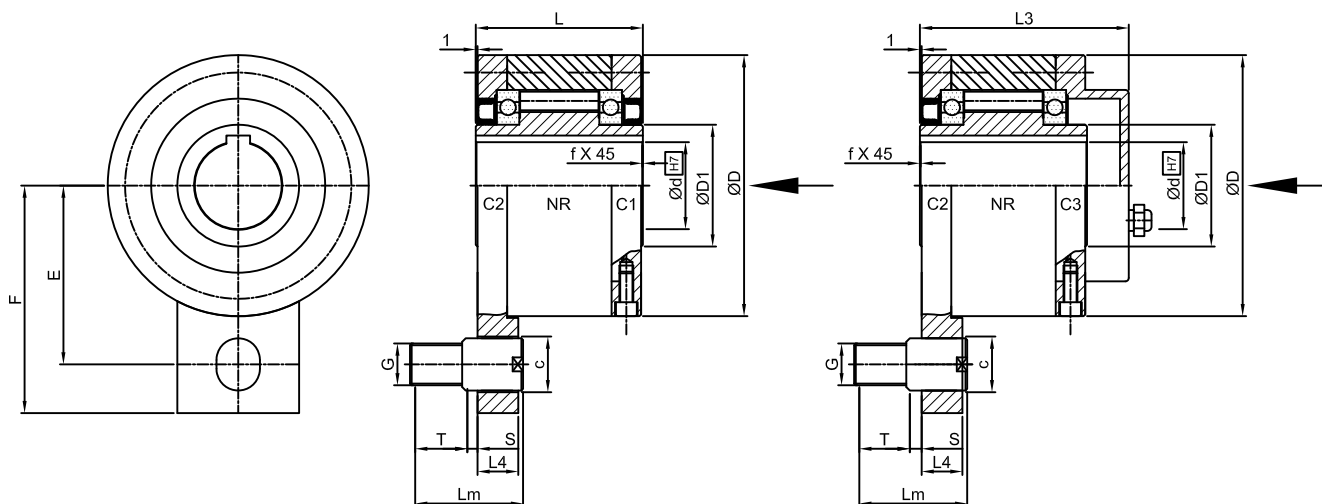
NR C2C3

◆ Features :

- Trapped rollers Freewheels NR C1C2 & C2C3 models are Self centered by means of Oil Sealing & pairs of ball bearing supported. So, unit is Self sealed designed.
- Requires Oil lubrication.
- Component mounted onto the outside diameter of Outer race should be bored to H7 tolerance & Shaft tolerance must be h6/j6.
- This type of Combinations are used as Backstops, in which C2 covers are act as Lever Arm & C1,C3 covers are used as close unit. C2 cover also called as Torque arm which has an integrated Stop bolt which must go into a slot in a fixed part of machine.
- This type of Combinations are arranged on through shafts or shaft ends.
- If C3 type End cover is used then sealant must be provided to the keyway to avoid loss of Lubrication through it. Oil feeling is been carried out after the freewheel has been installed.
- Bore range : up to 150 mm
- Transmitting torque : 70000 Nm

◆ Mounting Example:





## NR C1C2

## NR C2C3

d (H7)	Max. Torque	Max. Overrunning Inner RPM	D (h7)	D1	F	E	L	L3	Lm	L4	S	T	G	f	Weight
mm	Nm		mm	mm	mm	mm	mm	mm	mm	mm	mm	mm		mm	kg
12	55	3100	62	20	59	44	42	64	40	13	5	15	M12	0.5	1.4
15	125	2800	68	25	62	47	52	78	40	13	5	15	M12	0.8	1.8
20	181	2400	75	30	72	54	57	82	46	15	5	20	M16	0.8	2.3
25	288	1600	90	40	84	62	60	85	46	18	5	20	M16	1	3.4
30	500	1300	100	45	92	68	68	95	56	18	5	25	M20 x 2	1	4.5
35	725	1200	110	50	102	76	74	102	56	25	6	25	M20 x 2	1	5.6
40	1025	850	125	55	112	85	86	115	62	25	6	30	M24 x 2	1.5	8.5
45	1125	740	130	60	120	90	86	115	62	25	6	30	M24 x 2	1.5	8.9
50	2125	580	150	70	135	102	94	123	75	25	6	35	M30 x 2	1.5	12.8
55	2625	550	160	75	142	108	104	138	75	30	6	35	M30 x 2	2	16.2
60	3500	530	170	80	145	112	114	147	75	30	6	35	M30 x 2	2	19.3
70	5750	500	190	90	175	135	134	168	100	35	6	45	M36 x 2	2.5	23.5
80	8500	480	210	105	185	145	144	178	105	35	6	50	M40 x 2	2.5	32
90	14500	420	230	120	205	155	158	192	120	45	7	55	M48 x 2	3	47.2
100	20000	310	270	140	230	180	182	217	135	45	8	60	M52 x 2	3	76
130	31250	220	310	160	268	205	212	250	140	60	8	65	M60 x 2	3	110
150	70000	170	400	200	325	255	246	286	165	60	8	75	M72 x 2	4	214

### Notes :

- 1) Function : Overrunning, Backstopping, Indexing
- 2)  $T_{max} = 2 \times T_n$ .
- 3) The maximum Overrunning speeds are for Oil lubrication only.
- 4) Shaft dia. is to be controlled within h6/j6.

- 5) Keyway as per DIN 6885 - 1.
- 6) Other sizes on request.
- 7) All dimensions are in m.m.
- 8) We manufacturing in inch series also.

DISTRIBUTED BY

