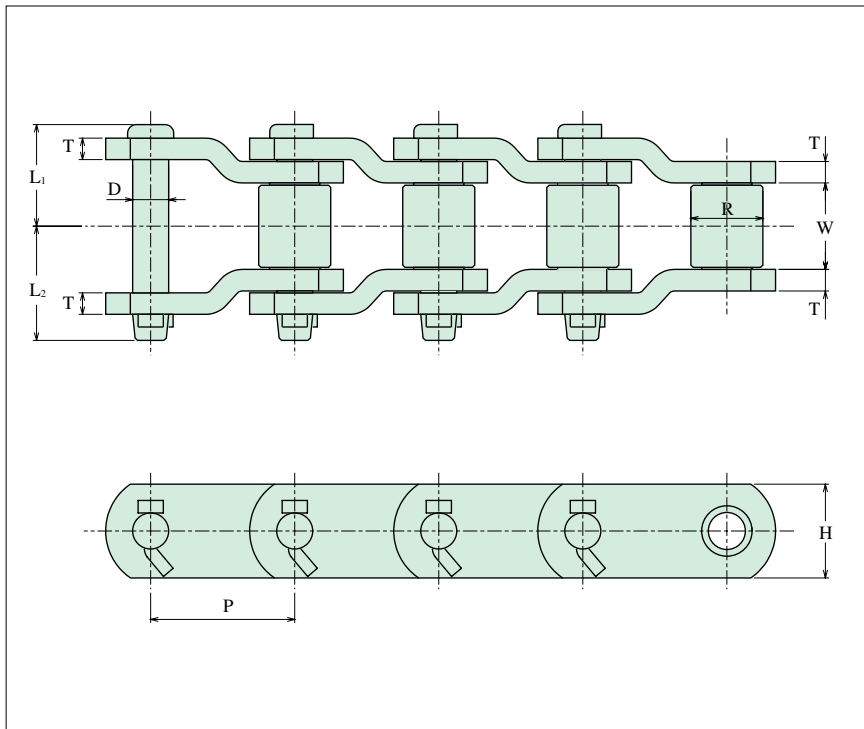


Heavy Duty Drive Chains



These chains are suitable for power transmission in machines which are subjected to extremely large forces and shocks, such as civil engineering, construction and oil drilling equipment. Heat-treated special steel is used for their main components, and they are machined to high precision. These are offset-type chains, which give them superior impact resistance.

Chain No.	Dimensions (mm)								Average Ultimate Strength		Weight
	Pitch	Roller		Pin		Plate					
		P	Width	Dia.	Dia.	Length	Height	Thickness	kN	kgf	kg/m
H2570H	63.50	38.10	31.75	15.88	44.80	50.30	41.30	9.50	333	34000	13.90
H3011	77.90	39.70	41.28	19.05	45.60	54.30	57.20	9.50	490	50000	19.80
HP3H	78.11	38.10	31.75	15.88	44.80	50.30	41.30	9.50	333	34000	12.20
H3125	79.38	41.30	41.28	20.32	46.40	55.10	57.20	9.50	510	52000	19.90
H238	88.90	38.10	44.45	22.20	51.30	59.80	57.20	12.70	623	63500	24.40
H1242	103.20	49.20	44.45	22.23	56.80	65.40	57.20	12.70	623	63500	23.80
HP4H	103.20	49.00	44.45	23.23	63.30	73.70	58.70	15.90	755	77000	28.90
H1245	103.45	49.20	45.24	23.83	60.00	69.00	60.30	14.30	755	77000	27.60
H635	114.30	52.40	57.15	27.80	61.60	73.40	76.20	14.30	981	100000	37.60
H1602A	127.00	69.80	63.50	31.75	73.50	84.70	88.90	15.90	1245	127000	50.80
H6042	152.40	76.30	76.20	38.10	85.80	93.80	101.60	19.00	1863	190000	67.40

It is stocks class

H10199	101.60	58.70	57.15	28.58	61.50	72.50	76.20	12.70	978	99700	37.70
H10398	103.89	49.20	47.63	25.40	60.00	70.00	76.20	14.30	961	98000	34.70
H127170	127.00	69.90	63.50	34.90	84.30	89.80	91.00	19.00	1765	180000	60.10

It is extra workmanship (It takes the appointed date of delivery)