



Product Guide

DISTRIBUTED BY



CHAIN & DRIVES
COMPLETE BEARINGS
& POWER TRANSMISSION

SERVICE & SUPPORT

Wangara, WA Welshpool, WA Arndell Park, NSW
+61 8 9303 4966 +61 8 6314 1155 +61 2 9674 8611
support@chainanddrives.com.au salesnw@chainanddrives.com.au

chainanddrives.com.au

**ELECTRIC
MOTORS**

GEARBOXES

**DRIVES
& SOFT
STARTERS**

Quality. Service. Range.



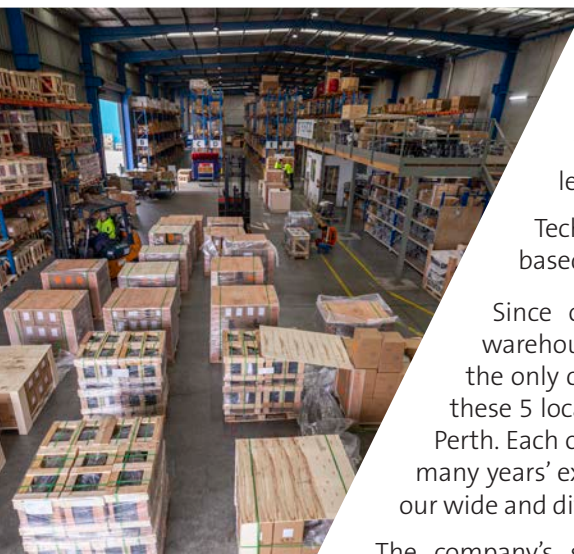
The story of Techtop Australia

A business that's powered by people.

Techtop Australia Pty Ltd, founded by well-respected Directors Rohan Pollard and Jeff Aird, entered a joint venture partnership in 2013 with Shanghai Top Motor Co, the largest manufacturer of aluminium electric motors in China.

In 2015, Jack Gringlas OAM joined the board of Techtop Australia as Chairman, the board comprising these 3 directors have knowledge of the Australian electric motor market spanning back over 40 years.

The combination of a leading motor manufacturer and Australia's most experienced sales team provides our customers with quality products, excellent service & technical knowledge.



Techtop Australia will now form part of a global organisation with Techtop's leading partners in America, Canada, Europe & U.A.E. just to mention a few.

Techtop Australia Pty Ltd, has its head office and primary distribution operation based in Dandenong, an outer eastern suburb of Melbourne.

Since our inception we have opened sales offices and warehouses in every mainland state of Australia and are now the only company that can provide direct representation in these 5 locations; Melbourne, Sydney, Brisbane, Adelaide & Perth. Each of these offices has a local manager that enjoys many years' experience in the industry and is respected by our wide and diverse customer base.

The company's strength is based on its professional, experienced and enthusiastic staff, who are constantly striving to ensure customer service is held at the forefront of our business.



DRIVES & SOFT STARTERS



Variable Speed Drives

- Single & 3 Phase Input
- IP20 & IP66 available
- Switched & non-switched versions
- 110V to 480V
- 0.37kW to 250kW

Soft Starters

VMX-agility & VMX-synergy

- Low Voltage
- OLED & Touch screen displays
- Modbus RTU
- 17 – 1,080 A



SMP DIVISION



Shaded Pole C Frame Motors

- Available from 1 watt to 40 watt – 2 pole
- 9mm to 50mm stack length
- Ball & sleeve bearing models
- Single & double shaft



PSC & ECM Motors

- 48 frame 240/1/50
- Single speed & multi-speed designs
- 315W to 750W in single shaft & double shaft
- Mounting available in resilient rubber, band mount or resilient cradle



SERVICE & SUPPORT

Wangara, WA +61 8 9303 4966 support@chainanddrives.com.au	Welshpool, WA +61 8 6314 1155 salesnsw@chainanddrives.com.au	Arndell Park, NSW +61 2 9674 8611 chainanddrives.com.au
---	--	---



Evaporative Cooler Pumps

- Direct replacement for all major brands
- Superior corrosion resistance due to 303 grade stainless shaft
- Continuous duty 240V 50Hz fitted with auto-reset overload
- Available in flow rates from 19 to 50 litres per minute



B56 Rolled Body Motors

- Available in PSC or CS/CR design in 2/4/6 pole
- General purpose 0.37kW to 1.50kW
- Fan motors 0.37kW to 0.75kW
- Grain feeder motors 0.37kW to 1.10kW
- Builders range includes bricksaw, cement mixer & compressor motors

Product Guide

ELECTRIC MOTORS

GEARBOXES



DRIVES & SOFT STARTERS

Quality. Service. Range.

PHONE 1300 TECH TOP
www.techtop.com.au

PROD0221V1.LC



Single Phase Motors

- TMY permanent split capacitor range for pump & fan applications
- TML cap start/cap run range for higher starting torque
- Dual voltage 240/480V available from 1.5kW & above
- Outputs from 0.06kW to 3.7kW

Three Phase Standard Motors

- Available in standard & high efficiency models
- Multi-mount design in both aluminium & cast iron
- Increased outputs in smaller frame size available
- Brake motors & two-speed motors
- Outputs from 0.06kW to 315kW

Three Phase Mining Motors

- Suitable for mining or harsh environment applications
- Class H, IP66 fitted with cast iron fan & cowl
- Two-pack epoxy coating system
- Outputs from 0.75kW to 315kW

Three Phase Large Output Motors

- Cast iron IE3 design in 415V or 690V
- 355kW to 630kW in 2 Pole
- 400kW to 630kW in 4 Pole
- 280kW to 450kW in 6 Pole

Exd (Flameproof) Motors

- IEC/Ex approved
- IE3 efficiency with IP66 protection
- Available from 380V to 1000V
- Outputs from 0.75kW to 355kW

Smoke Spill Motors

- Rated at 300°C for 2 hours
- Fitted with extended leads
- Frame size 80 to 315

Stainless Steel Motors

- Suitable for food, beverage, marine industries and harsh environments.
- IE3 IP67 in 2, 4 & 6 pole TEFC or TENV
- 0.18kW to 7.50kW 415/3/50
- Available in B3, B5, B3/5, B3/14A or B14A mount



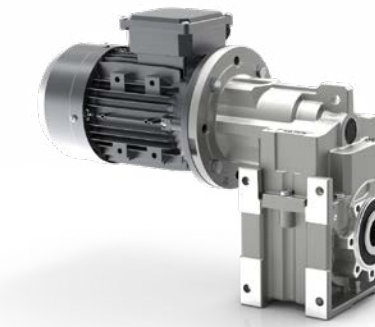
VARVEL RD Inline Helical Gearbox

- 0.09kW – 22kW
- Torque 20 - 2300Nm
- Ratios 2.3 - 664 : 1
- 7 sizes
- Housings and covers of aluminium diecast up to size 4
- Grey cast iron from size 5
- Two and three gear trains
- Euro footprint



VARVEL RO / RV Bevel Helical Gearbox

- 0.09kW – 22kW
- Torque 180 - 3300Nm
- Ratios 6.43 - 342 : 1
- 6 sizes
- Aluminium pressure diecast up to size 3
- Grey cast iron from size 4
- 3 stages
- Multi-mount VARVEL



Varvel RN Flat Helical Gearbox

- 0.09kW – 22kW
- Torque 180 - 3300Nm
- Ratios 5.6 - 684 : 1
- 6 sizes
- Aluminium pressure diecast up to size 3
- Grey cast iron from size 4
- 2 and 3 stages
- Multi-mount



Techtop TJA1 Single Stage Inline Helical Gearbox

- 0.25kW – 45.0kW
- Torque 70 - 830Nm
- Ratios 1.30 – 8.65 : 1
- 6 sizes
- Housings Grey cast iron
- Single gear trains
- Euro footprint



VARVEL RP Single stage Helical Gearbox

- 0.25kW – 1.5kW
- Torque 4 - 37Nm
- Ratios 1.52 – 7.91 : 1



VARVEL RT Worm Gearbox

- 0.09kW – 7.5kW
- Torque 8 - 1350Nm
- Ratios 5 - 10000 : 1
- 7 sizes
- Housing and covers of aluminium diecast up to size 85
- Grey cast iron size 110
- Helical stage and single worm/wheel units
- Multi-mount



VARVEL RS Worm Gearbox

- 0.09kW – 15kW
- Torque 8 - 3020Nm
- Ratios 5 - 10000 : 1
- 9 sizes
- Housing and covers of aluminium diecast up to size 85
- Grey cast iron size 110 - 150
- Helical stage and single worm/wheel units



VAR-SPE Hydrostatic Speed Variator

- K2 - K4 - K5
- 0.37kW – 4kW
- Wide Speed Range 50 - 1500 rpm
- Adjustable Torque Control
- Reversible
- High Starting Torque
- Larger sizes available up to 22.0KW



VARVEL VR Friction Disc

- Mechanical variable speed Variator
- 0.18kW - 1.5kW 4 Pole
- 1500 – 300RPM



Varvel VS Planetary Speed Variator

- Mechanical variable speed
- 0.18kW – 4kW 4 Pole
- 1000 – 200RPM



VARVEL RG Planetary

- High precision planetary
- Reduced backlash
- 0.09kW – 15kW
- Torque 6 - 110Nm
- Ratios 3 - 100 : 1



Techtop CR Stainless Steel Worm Gearbox

- Size 40 and 50 Worm reducers
- 0.18kW – 0.37kW
- Standard ratios from 5 to 100:1
- Lubricated as sealed for life with Synthetic oil
- Lubricated with Food Grade oil, pressure breather fitted
- Available in either flange or face mount

Other services available are gearbox modifications, both imperial and metric - including changes to shaft length, diameters, keyways and/or cross drilling.

Special input flanges for NEMA, Servo, Hydraulic and Pneumatic motors are also available