



Drilling & Mobile Equipment





An authoritative leader with proven experience in the drill rig industry including exploration, drill & blast, directional and water bore drilling.

We stock a wide variety of chains from market leading brands and can supply specified continuous lengths on request.

We provide complimentary site visits. Our friendly, trained team of specialists will measure and inspect your chain and report potential points of failure. Our detailed reports will provide a variety of suitable chains and include engineering data to help in the selection process.

4 Drill Chain

5 Suppliers

8 Sprockets, Chain Lubricants, Bearings, Seals

9 Couplings

10 Engineered Solutions Servicing





Drill Chain Specialist

Industry standard chains designed to meet the demanding heavy load requirements of drilling. Our environmentally resistant chains offer protection from: rust, abrasion, extreme humidity, extreme temperatures and more.

Supplying the world's leading brands, Chain & Drives will always have a solution for any drill rig roller chain requirement.

Corrosion Resistant Chain

Designed to withstand corrosion in environments with moisture, chemicals, or saltwater exposure; they're made from materials like stainless steel to prevent rust and degradation. Used in marine, chemical, and outdoor settings, ensuring equipment reliability in corrosive conditions.

Double Capacity Chain

A reinforced chain designed to handle heavier loads than standard chains. It's built with thicker links, stronger materials, or structural modifications, allowing it to support double the typical load capacity. It's used in heavy-duty industries like construction, manufacturing, and transportation where robust load-bearing capabilities are crucial.

Equipment Drive Chain

We supply high-quality equipment drive chains for bobcat, skid loaders, excavators, trenchers, piling rigs and industrial hire equipment. Our reliable drive chains are built to withstand heavy-duty use and provide superior strength and power transmission.

Heavy Duty Roller Chain

Robust, load-bearing mechanical chains made from materials like carbon or alloy steel. They're precision-engineered, handle heavy loads, resist wear and corrosion, and come in various sizes. These chains are crucial in industries like manufacturing, construction, and agriculture for efficient power transmission and load conveyance.

Leaf Chain

Simple steel chains, consisting only of link plates and pins. This chain has greater tensile strength than roller chains and runs over sheaves rather than sprockets. They are suitable for hanging, balancing or motion transmitting.

Leaf chains are often used as counterweight chains for machine tools, elevator and oven doors, fork lift truck masts, spinning frames and similar lifting or balancing applications. Plates are connected by pins and hold the tension loaded on the chain.

Sealed & Lubricated Roller Chain

Designed with protective seals to prevent contaminants from entering and come pre-lubricated, reducing maintenance. They offer extended chain life and find use in industries like food processing, packaging, and conveyor systems, prioritizing cleanliness and reliability.

Specialty Chain

We supply specialty chains; custom-engineered for unique industrial needs, tailored to challenges like extreme conditions or non-standard shapes. They use specialized materials, offer enhanced performance, unique configurations, and high precision. Examples include high-temperature and conveyor chains, designed for specific industries and applications to ensure efficiency and reliability.



Heavy Duty Chain

HI-PWR-S Roller Chain

- > The dimensions are identical to ANSI/JIS Standard Roller Chain
- > Maximum Allowable Load 30% Higher than D.I.D Standard
- > Oval Figured Wider Waist Link Plates and Thru Hardened Pin
- > Size available in 80 through 240 up to 3 strands in riveted and cottered style.

HK Roller Chain

- > The dimensions are identical to ANSI Heavy Series Roller Chains
- > Thru Hardened Pin and Thicker Link Plate of next larger size
- > Tensile Strength 20% Higher than D.I.D Standard
- > Size available in 40 through 240 up to 3 strands in riveted and cottered style.

HI-PWR-SHK Roller Chain

- > Heavy Duty and Wide Waist Link Plates with Thru Hardened Pins
- > Maximum Allowable Load 50% Higher than D.I.D Standard Chain
- > Size available in 80 through to 240 in both riveted and cottered style



Heavy Duty Chain

NEX-G

- > All parts are manufactured with special coating, protecting the chain from corrosion
- > Coating method contains no hazardous heavy metal substances, such as chromium.
- > Breaking strength and wear life same with standard chain.

Heavy Series Roller Chain

- > The standard for power transmission roller chain
- > Complies to Korean Standard KS B 1407, American Standard ANSI B29.1, Japanese Standard JIS B 1801, International Standard ISO R606 (Type-A)
- > The DBC25~240 chain has certificate KS.

SUPER Chain

- > A precise chain with high fatigue and tensile strength (40%, 10% more than Standard Chain, respectively)
- > Specially designed plate shape to improve and equalise stress distribution
- > Superior wear resistance to both DBC Standard Chain and DBC NEX1 Chain.

Leaf Chain

Carbon Steel Lifting Roller/Leaf Chain (AL & BL Series)

- > Plate exterior, thickness and pin external diameter -identical to ANSI Standard Roller Chain (same pitch)
- > Made according to the ANSI B29.8 American Standard
- > Supplied with male or female terminations to allow addition of various clevises as desired.



iwis

Heavy Duty Chain

ELITE High-performance Roller Chain

- > Approx. 40% higher breaking strength is applied to pre-stretch our chains by 10% more than required by standard ISO 606
- > Initial lubrication with eliDUR+ ensures extremely high wear resistance
- > Tensile strength on average 20% higher than required by standard ISO 606
- > ELITE pins have a smooth, extra-hard surface for increased wear resistance
- > Operating temperature range with eliDUR+ standard lubrication: -5 °C to +70 °C

JWIS 160-1 Roller Chain

- > Above average service life due to excellent wear resistance, high consistency and precision
- > Considerably higher breaking strength and fatigue strength than required by ISO standard.

Leaf Chain

ELITE Leaf Chain

- > Series LL [F]- lightweight design, in accordance with European standard (ISO 4347 and DIN 8152)
- > Series AL lightweight design, in accordance with American (dimensions as per DIN 8188)
- > Series LH [BL] - reinforced design, in accordance with American standard (ISO 4347 and DIN 8152)
- > Very high fatigue strength
- > Compliant with EC Machine Directive 2006/42/EC



TRANSDRIVE

Heavy Duty Chain

TransDrive Offset Sidebar Welded Steel Chain

- > Offset welded steel construction ensures maximum load-carrying capacity.

TransDrive Straight Sidebar Welded Steel Chain

- > Constructed from high-quality steel, capable of handling heavy loads
- > Resistance to harsh environments, including exposure to dirt, dust and moisture
- > Longevity and reliability can result in cost savings over time due to reduced maintenance and replacement needs.

TransDrive Extra Heavy Duty Welded Steel Chain

This welded steel chain offers strength and longevity, making it the ideal choice for heavy-duty material handling and conveying systems.

Leaf Chain

TransDrive AL (American Light) Series Leaf Chain

- > Manufactured to the ANSI B29.9 standard
- > Constructed from American standard roller chain components
- > Used for light load lifting applications and machine tools.

BL / LH Series (Heavy) Leaf Chain

- > Link plates which are thicker and larger in contour than the AL Series link plates of the same pitch
- > Link plates have the same thickness as the link plates of the next larger pitch size in ANSI roller chains.



Zexus NEO-SBR Prime Series

- > Incorporates all features of NEO-SBR Prime +30% maximum allowable load and triple zone hardening on all components.

Zexus CR Corrosion

- > Resistant chain coating system
- > Sizes include BS and ANSI 100 1-1/4", 120 1-1/2", 140 1-3/4", 160 2", 180 2-1/4", 200 2-1/2"
- > Available in simplex and duplex.
- > Drill Rig chain available in standard and CR series.

Zexus HE Series Roller Chain

- > Thicker side plates to insure greater capacity for absorbing shock loads.

Zexus Super Roller Chain

- > Upgraded to a high degree over existing ANSI standard roller chains, promising a higher performance and superior quality.

Leaf Chain

Zexus AL (American Light), BL (Heavy Duty), LL (Heavy Duty) Series Leaf Chain

- > Consisting of link plates of the same contour and thickness as the pin link plates of ANSI roller chains in same pitch
- > Mainly used for relatively constant, low, medium load with less shock.





Sprockets

Our sprockets are manufactured from high grade steel and supplied with induction hardened teeth. Chain and Drives are experienced in working with Original Equipment Manufacturer requirements and can offer tailored services, CAD designed and special indent orders to suit your equipment needs.

- > Bored & Keyed Sprockets
- > Bossed Sprockets
- > Plain Bored Sprockets
- > Special Sprockets
- > Stainless Steel Sprockets
- > Taper Lock Sprockets
- > Weld Fit Sprockets



Chain Lubricants

Our chain lubricant is supplied in accordance with manufacturers specifications and is recommended to be applied with all new chain installations. Chain & Drives are proud to stock our very own specialised chain lubricant; as well as additional stock for immediate delivery of your lubricant requirements.

Bearings

We supply market leading bearings and rotating machine parts to the drilling and mobile equipment sector. Our expertise in the field provides customers reduced downtime and lower maintenance cost of your capital equipment.

- > Ball Bearings
- > Cylindrical Roller Bearings
- > Backstops & Freewheels
- > Housings & Units
- > Needle Bearings
- > Rod Ends
- > Slewing Bearings
- > Stainless Steel Bearings
- > Tapered Roller Bearings
- > Accessories



Seals

- > Duo Cones
- > O-Rings
- > Oil Seals





Flexible and Elastomeric Shaft Couplings

Providing a means to transmit torque between two shafts while accommodating any misalignment, reducing vibration and noise.

Reich Arcusflex Couplings

A highly flexible flywheel coupling with an axial plug-in facility, providing a torsionally soft connection between an internal combustion engine and a driven machine.



Stromag Periflex Disc Couplings

Plug-in, highly flexible disc couplings ideal for diesel engine drives. Its simple flanged connection to flywheels makes it ideal for piston engines.



Centaflex A Couplings

An extremely high-performing, electrically insulating, and thermally resistant silicon design eliminates harmonic vibration; dampens torsional vibrations and compensates axial, radial, and angular misalignments.



Rexnord Omega Couplings

Rexnord Omega Couplings are non-lubricated, material-flexing couplings utilising a specially formulated polyurethane material engineered for maximum durability, strength and fatigue resistance. Omega couplings can operate in horizontal or vertical applications without additional components.



Engineered Solutions

Design, Specialised Projects & Custom Builds

We supply a range of specialised products & services to suit a variety of requirements.

Our design team will assist you through concept design to construction drawings ensuring your product is manufactured to your specifications. Offering tailored services & special indent orders to suit your equipment needs.

We offer branding of our products, labelled with your part numbers to assist you and your customer's after market supply requirements.

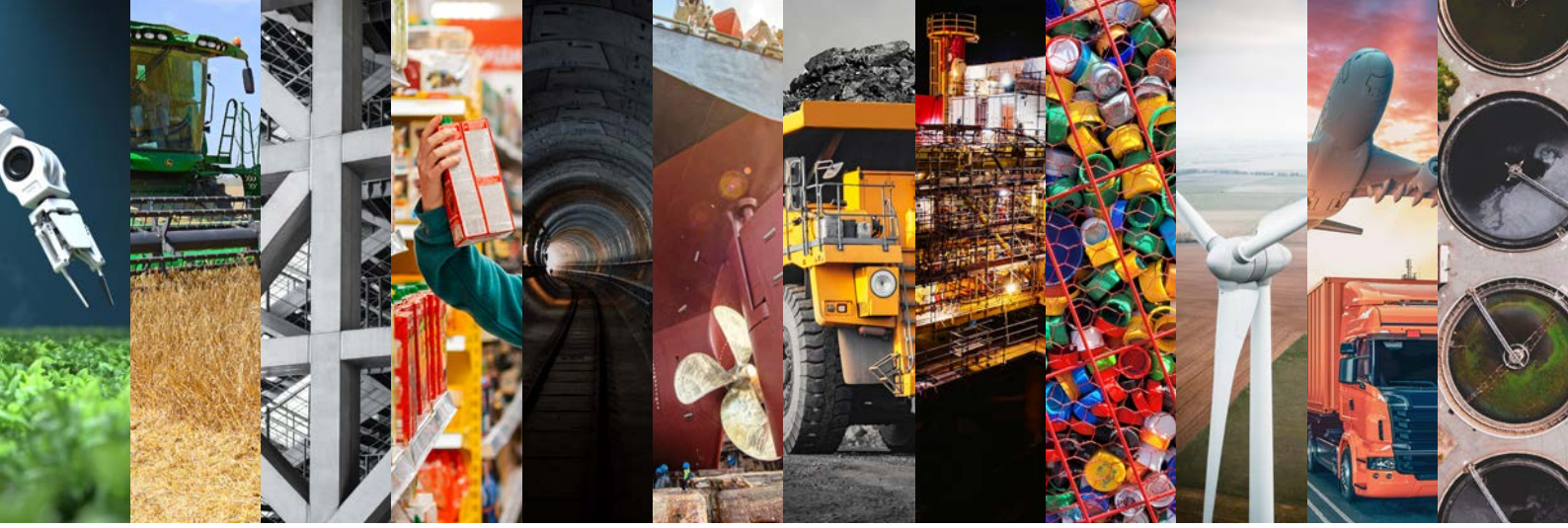
- > Gearbox & Drive Assemblies
- > Mixer Drives, Crusher Drives and Conveyor Drives
- > Factory Automation
- > Solar Tracking Drive Assemblies
- > Chain Breakers and Rivet Punches
- > Sprockets
- > Conveyor Chain
- > Couplings and Coupling Assemblies
- > Pulleys
- > Industrial Gearing



Servicing

Our servicing and repairs are carried out by our service & maintenance division, Techquip, where we offer on-site quotations and assessments.

- > Genuine Parts
- > Locally Manufactured Parts for urgent breakdown situations
- > Repair for all Industrial Gearboxes, Fluid Couplings, Linear Actuators & Variable Speed Drives.
- > Reliable Mobile Service Team
- > Full Project Management including Design, Supply, Installation, Maintenance on all Power Transmissions.
- > On-site Servicing & Repairs for a Range of Equipment: Gearboxes, Motors, VSD Drives, Actuators, Fluid Couplings, Conveyor Rollers and General Fabrication & Maintenance.



Automation Agriculture Concrete & Construction Food & Beverage Industrial
 Marine Mining & Heavy Industry Oil & Gas Recycling Renewable Energy
 Transportation Wastewater Treatment

CHAIN & DRIVES®

COMPLETE BEARINGS
& POWER TRANSMISSION

Your Complete Bearings & Power Transmission Specialists
 Supplying all of Australasia

chainanddrives.com.au
support@chainanddrives.com.au



Sales & Accounts

1/45 Inspiration Drive
 Wangara WA 6065
 P +61 8 9303 4966
 E admin@chainanddrives.com.au



Workshop & Engineering

22 Beneficial Way
 Wangara WA 6065
 P +61 8 6314 1100
 E support@chainanddrives.com.au



Sales & Workshop

16/51-53 Kewdale Road
 Welshpool WA 6106
 P +61 8 6314 1155
 E support@chainanddrives.com.au



Sales & Workshop

7/70 Holbeche Road
 Arndell Park NSW 2148
 P +61 2 9674 8611
 E salesnsw@chainanddrives.com.au

Chain & Drives Australia Pty Ltd • ABN 81 121 105 173 • EST. 2007

