

DISTRIBUTED BY



chainanddrives.com.au

Wangara, WA
+61 8 9303 4966

Welshpool, WA
+61 8 6314 1155

Arndell Park, NSW
+61 2 9674 8611

support@chainanddrives.com.au

salesnsw@chainanddrives.com.au



REXNORD® OMEGA® & VIVA® ELASTOMERIC COUPLINGS



RegalRexnord™

The Industry Benchmark

Rexnord® Omega® and Viva® Couplings are well recognized as the industry benchmark for elastomeric tire couplings. These non-lubricated, material-flexing split-in-half couplings are used in a variety of demanding applications. Omega and Viva have an excellent vibration damping capability, helping to extend the life of your connected equipment. They offer high-misalignment capacity, easy installation, and replace-in-place design while accommodating a wide range of shaft gaps.

VARIETY OF OPTIONS AND DESIGNS

Omega and Viva Couplings are available in a variety of sizes (metric and imperial) and spacing options (close-coupled, spacer, half-spacer, and extended spacer). These couplings are also available with anti-corrosive coated steel shoes, stainless steel hardware/hubs, spline bore hubs, keyless/internal locking device hubs, and positive drive with interlocking hubs. Omega Coupling elements are available in general purpose Standard Orange, High Density Yellow (HDY), and Hydrolytically Stable Urethane (HSU) Green.

RESISTANCE TO CHEMICAL & ENVIRONMENTAL AGING

Omega and Viva's specially formulated polyurethane provides superior chemical and environmental aging resistance as compared to competitive rubber-based solutions.

TORQUE-DENSE FLEX ELEMENTS

Omega High Density Yellow (HDY) and Viva are the most torque-dense elastomeric couplings available. They provide significantly higher torque capabilities than competitive solutions, allowing for possible coupling downsizing and ultimately a lower Total Cost of Ownership (TCO).

TIME TESTED, PROVEN & TRUSTED PERFORMANCE

The Omega and Viva coupling family has been used for over 45 years in a wide assortment of demanding applications and are recognized in industry as the benchmark for elastomeric split-in-half tire couplings.



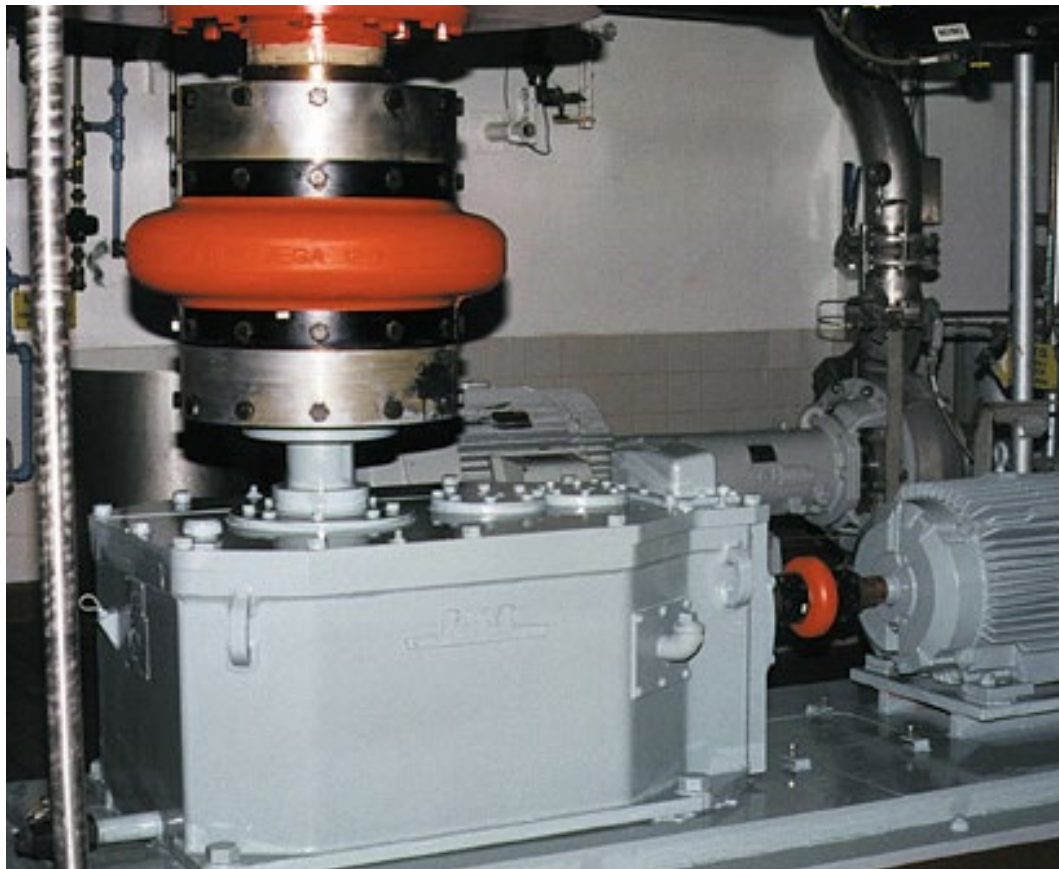
ATEX II 2GD c T5

Industries:

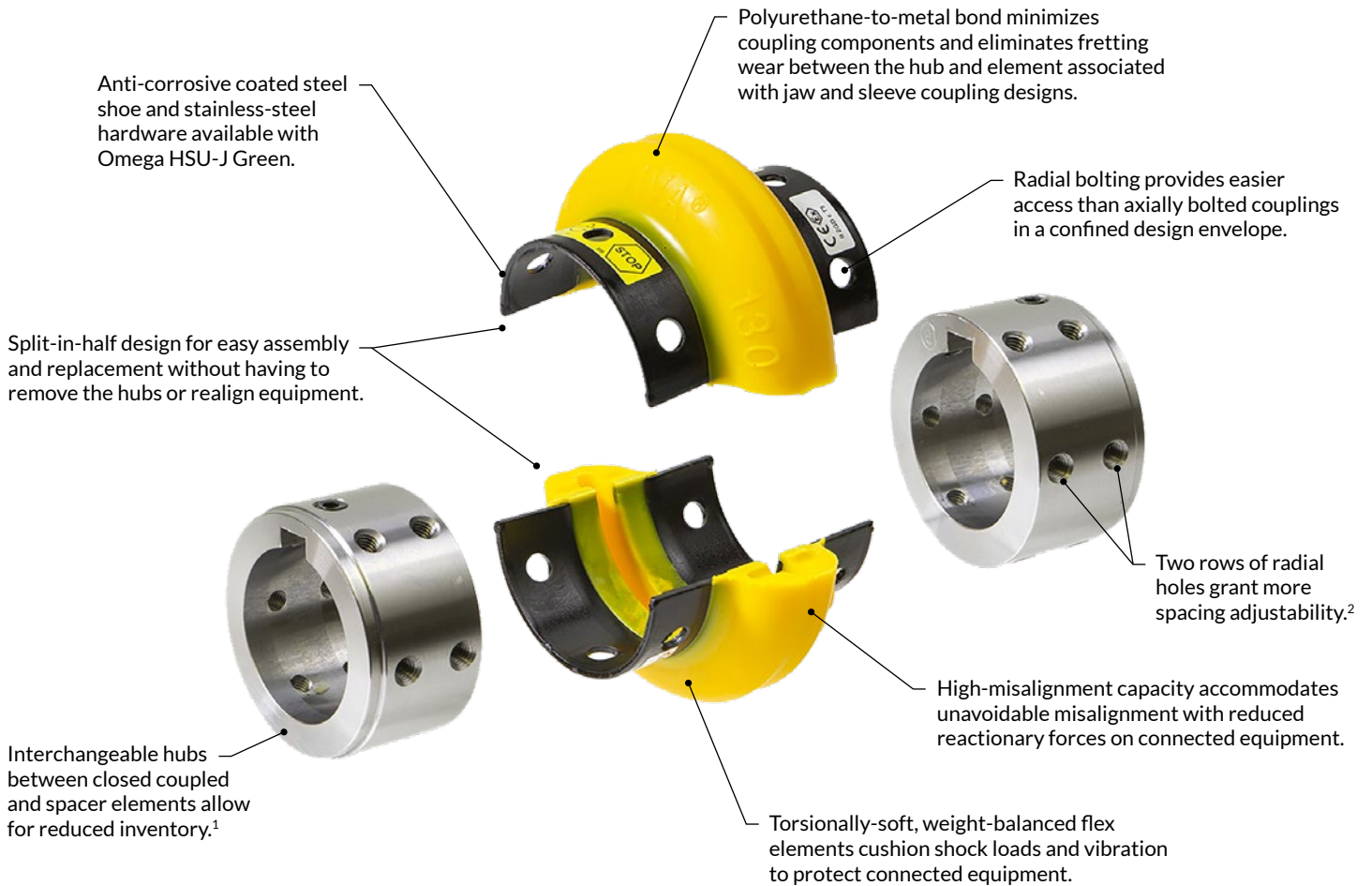
- Cement & Aggregate
- Paper & Forestry Products
- Construction Machinery
- Metal Processing
- Water & Wastewater
- Material Handling
- General Industrial

Applications:

- Pumps
- Blowers
- Compressors
- Industrial Fans
- Runout Tables
- Mixers
- Chippers & Saws



REXNORD® OMEGA® & VIVA® COUPLING ASSEMBLY



¹ Hubs are not interchangeable between Omega and Viva couplings.
² Two rows of radial holes only available with Viva couplings.

REXNORD OMEGA AND VIVA COUPLING FAMILY

Omega Standard Orange



- General purpose applications requiring the highest misalignment capacity
- Available with imperial or metric capscrews

Omega Heavy Duty Yellow (HDY)



- 25% greater torque capacity over Omega Standard Orange allows for possible downsizing
- Available with imperial or metric capscrews

Omega Hydrolytically Stable Urethane Green (HSU)



- Ideal in hot or humid conditions in addition to acidic or alkaline environments
- Anti-corrosive shoe coating available (HSU-J) for use in highly caustic environments
- Available with imperial or metric capscrews

Viva



- The most torque-dense elastomeric coupling available allows for possible downsizing
- Hubs with two rows of radial holes grant more spacing adjustability
- No special hubs or sleeve extensions needed for extra wide shaft gaps (up to 300mm)

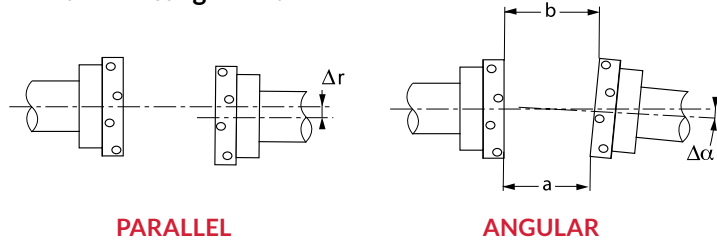
*The Elastomeric Benchmark
for over 45 years!*

REXNORD® OMEGA® & VIVA® COUPLINGS

Torque Ratings

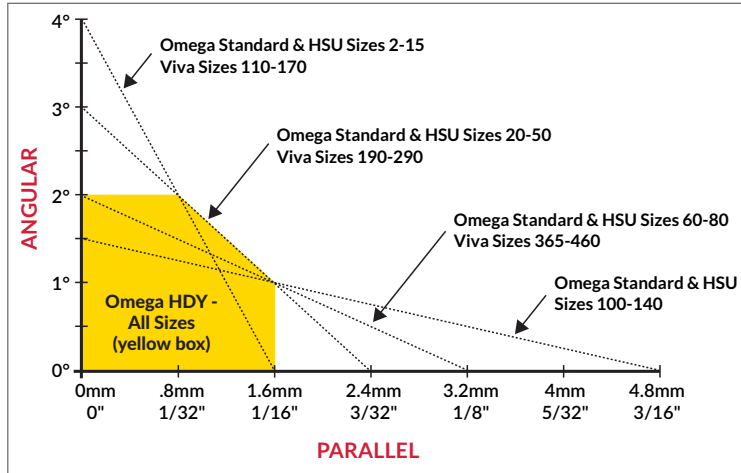
| Omega Orange & HSU (Size) | Omega HDY (Size) | Viva (Size) | Torque Rating | |
|---------------------------|------------------|-------------|---------------|--------|
| | | | (lb-in) | (Nm) |
| 2 | ... | ... | 190 | 22 |
| ... | 2 | ... | 238 | 28 |
| 3 | ... | ... | 365 | 41 |
| ... | 3 | ... | 456 | 51 |
| 4 | ... | 110 | 550 | 62 |
| ... | 4 | ... | 687 | 78 |
| 5 | ... | 125 | 925 | 105 |
| ... | 5 | ... | 1,156 | 131 |
| 10 | ... | 130 | 1,450 | 164 |
| 15 | ... | ... | 1,800 | 204 |
| ... | 10 | ... | 1,812 | 205 |
| ... | ... | 150 | 2,210 | 250 |
| ... | 15 | ... | 2,250 | 255 |
| 20 | ... | ... | 2,300 | 260 |
| ... | ... | 170 | 2,720 | 308 |
| ... | 20 | ... | 2,875 | 325 |
| 30 | ... | 190 | 3,650 | 412 |
| ... | 30 | ... | 4,563 | 515 |
| 40 | ... | ... | 5,500 | 622 |
| ... | ... | 215 | 5,860 | 662 |
| ... | 40 | ... | 6,875 | 778 |
| ... | ... | 245 | 8,300 | 938 |
| 50 | ... | ... | 7,650 | 864 |
| ... | 50 | ... | 9,563 | 1,080 |
| 60 | ... | 290 | 12,500 | 1,412 |
| ... | 60 | ... | 15,625 | 1,765 |
| ... | ... | 365 | 28,320 | 3,200 |
| 70 | ... | ... | 22,125 | 2,486 |
| ... | 70 | ... | 27,656 | 3,108 |
| 80 | ... | ... | 39,500 | 4,463 |
| ... | 80 | ... | 49,375 | 5,579 |
| ... | ... | 425 | 49,380 | 5,580 |
| ... | ... | 460 | 55,490 | 6,270 |
| 100 | ... | ... | 85,050 | 9,605 |
| ... | 100 | ... | 106,312 | 12,006 |
| 120 | ... | ... | 170,100 | 19,221 |
| ... | 120 | ... | 212,625 | 24,026 |
| 140 | ... | ... | 340,200 | 38,442 |
| ... | 140 | ... | 425,250 | 48,053 |

Allowable Misalignment



PARALLEL

ANGULAR



NOTE: Omega Standard Orange, Omega HSU, and Viva maintain their service life for any combination of parallel and angular misalignment measurements which fall on or below the line of the respective size. For Omega HDY, permissible misalignment values are shown in the yellow region and below the corresponding coupling size dotted line.

Coupling alignment is directly related to smooth, efficient equipment operation. Care should be taken for best possible alignment.

For more product information, refer to the Rexnord Omega and Viva catalogs located in the documentation section of www.rexnord.com.

- Omega catalogs: [4000](#) (imperial) & [4000_M](#) (metric)
- Viva catalog: [4044ENESFR](#) (metric)



Motion Control Solutions Regal Rexnord

Contact us: rexnord.com/contact

regalrexnord.com

The proper selection and application of products and components, including assuring that the product is safe for its intended use, are the responsibility of the customer. To view our Application Considerations, please visit <https://www.regalrexnord.com/Application-Considerations>. To view our Standard Terms and Conditions of Sale, please visit <https://www.regalrexnord.com/Terms-and-Conditions-of-Sale> (which may redirect to other website locations based on product family).

"Regal Rexnord" is not indicative of legal entity. Refer to product purchase documentation for the applicable legal entity. Regal Rexnord, Rexnord, Omega and Viva are trademarks of Regal Rexnord Corporation or one of its affiliated companies. © 2020, 2022 Regal Rexnord Corporation, All Rights Reserved. MCB22111E • Form# CP5-021E

DISTRIBUTED BY



chainanddrives.com.au

| | | |
|---|----------------------------------|--|
| Wangara, WA +61 8 9303 4966 support@chainanddrives.com.au | Welshpool, WA +61 8 6314 1155 | Arndell Park, NSW +61 2 9674 8611 salesnsw@chainanddrives.com.au |
|---|----------------------------------|--|

