

DISTRIBUTED BY



chainanddrives.com.au

Wangara, WA  
+61 8 9303 4966

Welshpool, WA  
+61 8 6314 1155

Arndell Park, NSW  
+61 2 9674 8611

support@chainanddrives.com.au

salesnsw@chainanddrives.com.au

**iwis**  
antriebssysteme  
wir bewegen die welt



## iwis Leaf chains: Tough. Reliable. Strong.

iwis leaf chains lift loads reliably and are compliant with the EC Machine Directive 2006/42/EC. Unlike roller chains, leaf chains consist of pins and link plates only, so **extremely high breaking forces** can be achieved.

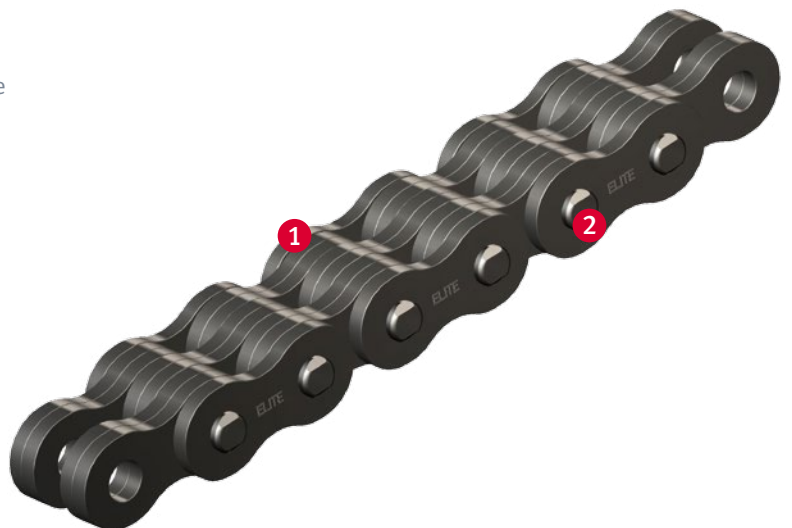
### Highlights

- 1 iwis link plates with very high tensile strengths
- 2 Pins with extra hardened surface for high wear resistance

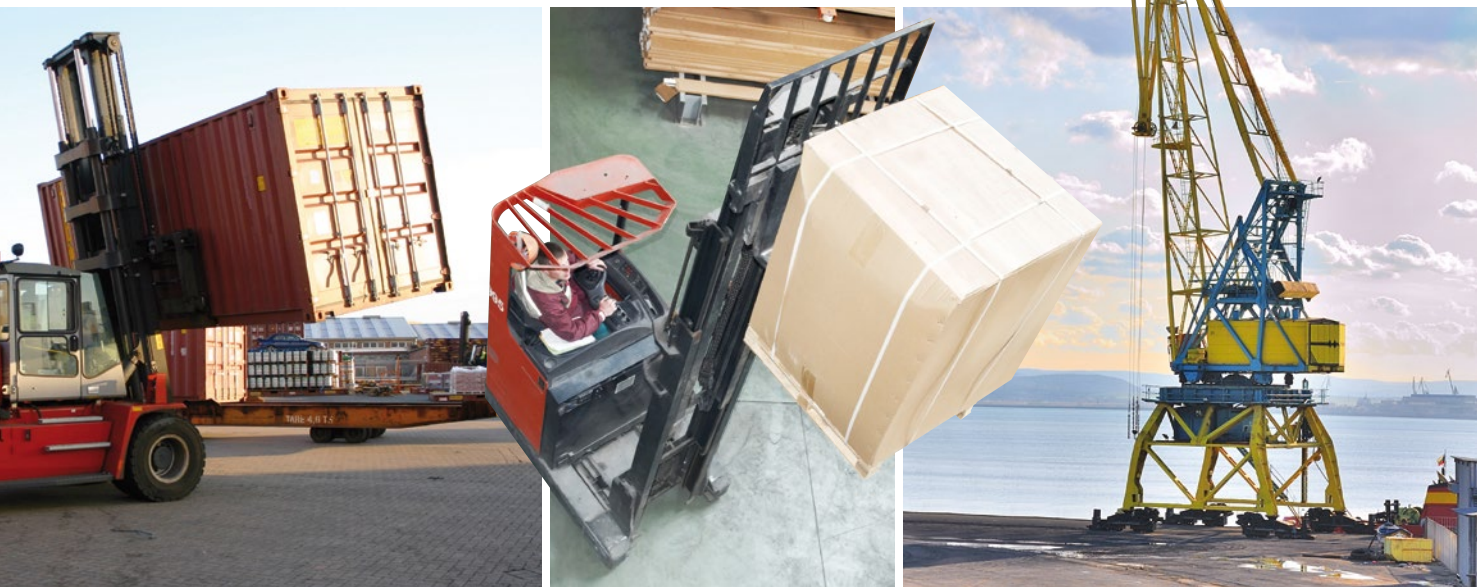
### Application fields

- Forklift trucks
- Lifting gear
- Toolmaking machinery
- Steel industry
- Container lift trucks
- Work platforms

... and wherever else there are lift requirements!



www.iwis.com



## Highlights

- Precision-formed, heat-treated and shot-peened link plates with optimised geometry
- Higher breaking forces achieved by optimised plate thickness
- Improved press-fitting of pins and outer plates for higher fatigue strength
- Link plates with a particularly high contact ratio
- Pins with hardened surfaces for increased wear resistance
- Special versions manufactured to works standards available
- Different pear drops and anchor bolts possible
- Wide range of products

**CE** iwis leaf chains are compliant with  
**EC Machine Directive 2006/42/EC**

## Research and development

iwis has been working for more than 15 years on the research and development of new leaf chains. We combine up-to-the-minute technology and assembly processes with optimum materials, coatings and geometry to constantly improve the technical characteristics of our products.

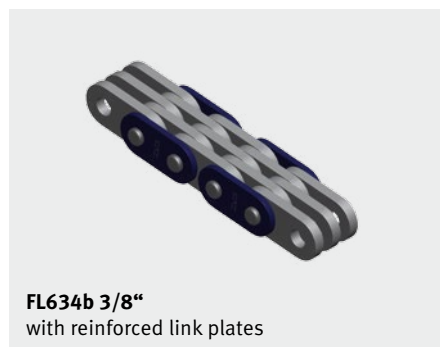
Our chains are designed in close collaboration with end users and are available from different iwis production sites.

### We offer the following customer services on request:

- Wear analysis
- Fatigue strength analysis
- Tensile load analysis
- Technical assessment tool available

**We use in-house developed test stands and methods to assure quality.**

## Examples of special versions



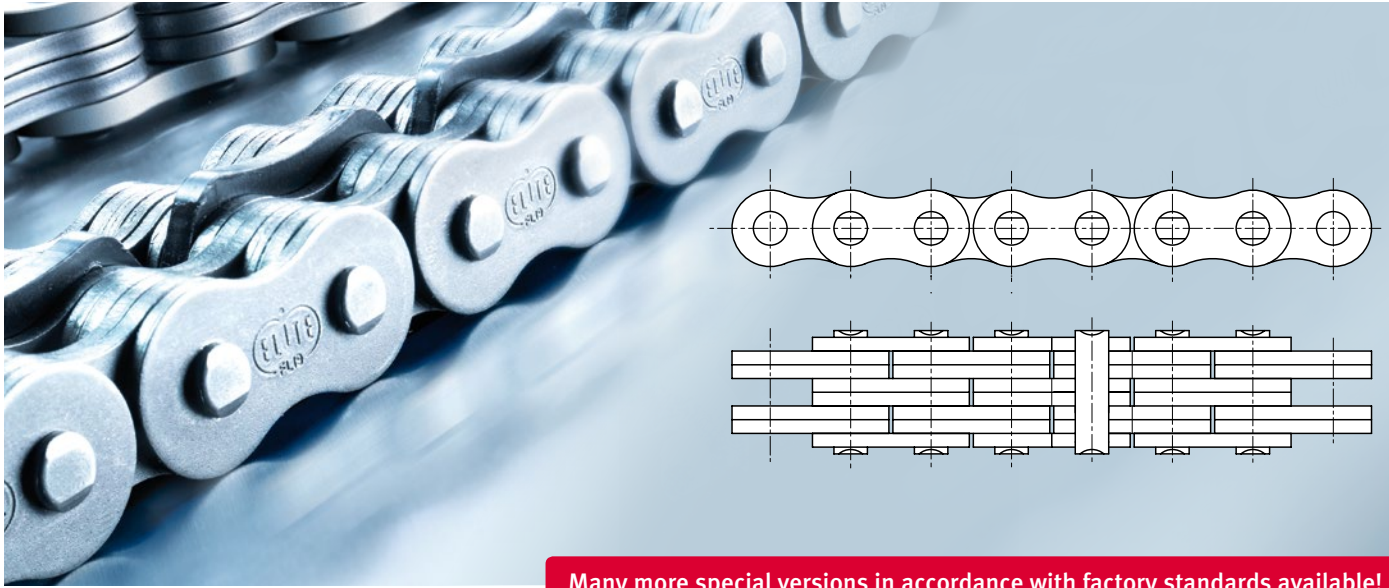
**FL634b 3/8"**  
with reinforced link plates



**FL834b**  
with customer-specific pear drop links



**FL844b**  
with connection to roller chain



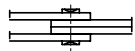
Many more special versions in accordance with factory standards available!

## iwis standard leaf chain program

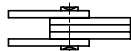
### Series LH [BL]

reinforced design, in accordance with American standard (ISO 4347 and DIN 8152)

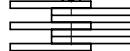
2x2 2x3 3x4 4x4 4x6 6x6 8x8



2x2



2x3



3x4



4x4



4x6



6x6



8x8

### Series LL [F]

lightweight design, in accordance with European standard (ISO 4347 and DIN 8152)

2x2 2x3 3x4 4x4 4x6 6x6 8x8

### Series AL

lightweight design, in accordance with American (dimensions as per DIN 8188)

2x2 2x3 3x4 4x4 4x6 6x6 8x8

## Some examples of special leaf chains with hose routings and hydraulic mast guards

### Type F2544 KS 105 / \*LL1644F1



### Type BL633 KS / \*BL623F3



### Type BL866 KS104 / \*BL 866F1



Please refer to the ELITE main catalogue and the JWIS main catalogue for more information about our leaf chains

# Our subsidiaries

## Germany

iwis antriebssysteme GmbH & Co. KG  
Albert-Roßhaupter-Straße 53  
81369 München  
Tel. +49 89 76909-1500  
Fax +49 89 76909-1198  
sales@iwis.com

## Germany

iwis antriebssysteme GmbH  
Essener Straße 23  
57234 Wilnsdorf  
Tel. +49 2739 86-0  
Fax +49 2739 86-22  
sales-wilnsdorf@iwis.com

## Germany

iwis agrisystems  
Schützenweg 5  
36205 Sontra  
Tel. +49 5653 9778-0  
Fax +49 5653 9778-26  
agrisystems@iwis.com

## Great Britain

iwis drive systems Ltd.  
Unit 8c Bloomfield Park  
Bloomfield Road, Tipton  
West Midlands, DY4 9AP  
Tel. +44 12 15213600  
Fax +44 12 15200822  
salesuk@iwis.com

## France

iwis systèmes de transmission  
10, rue du Luxembourg  
69330 Meyzieu  
Tel. +33 4374515-70  
Fax +33 4374515-71  
salesfr@iwis.com

## Switzerland

iwis AG Kettentechnik  
Bahnweg 4 (Postfach)  
5504 Othmarsingen  
Tel. +41 62 8898999  
Fax +41 62 8898990  
info@iwis-ketten.ch

## Italy

iwis antriebssysteme Italia  
Tel. +39 340 9296142  
Fax +49 89 76909 491647  
salesit@iwis.com

## China

iwis drive systems (Suzhou) Co., Ltd.  
266 Lv Liang Shan Road  
215153 Suzhou, China  
Tel. +86 512 8566-3010  
Fax +86 512 8566-3009  
salescn@iwis.com

## USA

iwis drive systems, LLC  
Building 100, 8266 Zionsville Road  
Indianapolis, IN 46268 USA  
Tel. +1 317 821-3539  
Fax +1 317 821-3569  
sales@iwisusa.com

## Canada

iwis drive systems, Inc.  
#1- 19349- 94th ave  
Surrey B.C. V4E 4E6  
Tel. +1 778-298-3622  
Fax +1 778-298-7219  
salesca@iwisusa.com

## Brazil

iwis Sistemas de Transmissão  
de Energia Mecânica Ltda.  
Rua Bento Rosa, nº 1816  
Bairro Hidráulica  
95.900-000 Lajeado, RS  
Tel. +55 51 3748-7402  
salesbrazil@iwis.com

## South Africa

iwis drive systems, (Pty) Ltd  
Unit 3, 127 Koornhof Road  
Meadowdale, 1613, South Africa  
Tel. +27 11 392-2306  
Fax +27 11 392-3295  
salessa@iwis.com

## Turkey

iwis antriebssysteme GmbH & Co. KG  
Türkiye İstanbul İrtibat Bürosu  
Tel. +90 543 554 3483  
salestr@iwis.com

[www.iwis.com](http://www.iwis.com)

**iwis**  
antriebssysteme  
wir bewegen die welt

DISTRIBUTED BY

**CHAIN & DRIVES**  
COMPLETE BEARINGS  
& POWER TRANSMISSION

[chainanddrives.com.au](http://chainanddrives.com.au)

**Wangara, WA**

+61 8 9303 4966

[support@chainanddrives.com.au](mailto:support@chainanddrives.com.au)

**Welshpool, WA**

+61 8 6314 1155

**Arndell Park, NSW**

+61 2 9674 8611

[salesnsw@chainanddrives.com.au](mailto:salesnsw@chainanddrives.com.au)