

2D Zeichnung und Abmessungen s. S. 2

Bremsmoment  $M_{Br}$  [kNm] = Bremskraft [kN] x eff. Bremsscheibenradius [m]  
 eff. Bremsscheibenradius = ( 0,5 x Bremsscheibenaußen -Ø [m] ) - 0,142m

Typ	Artikel-Nr.	Bremskraft [kN]	Bremskraftverlust pro 1 mm Hub [%]	$p_{min.}$ [bar]	$p_{max.}$ [bar]
EBS 008 – 370 FL	<b>60106-370FL</b>	370	8,8	200	250
EBS 008 – 340 FL	<b>60106-340FL</b>	340	9,8	185	235
EBS 008 – 300 FL	<b>60106-300FL</b>	300	11,2	171	221
EBS 008 – 270 FL	<b>60106-270FL</b>	270	12,9	155	205
EBS 008 – 250 FL	<b>60106-250FL</b>	250	8,6	135	185
EBS 008 – 230 FL	<b>60106-230FL</b>	230	9,6	125	175
EBS 008 – 205 FL	<b>60106-205FL</b>	205	10,9	115	165
EBS 008 – 180 FL	<b>60106-180FL</b>	180	12,7	105	155

Ölbedarf bei 1 mm Luftspalt je Bremsbelag: 51,5 cm<sup>3</sup>

Bremse geeignet zum Anbau an Bremsscheiben nach DIN 15432 Dmin. Ø ≥ 1500 mm

Masse: 815 kg

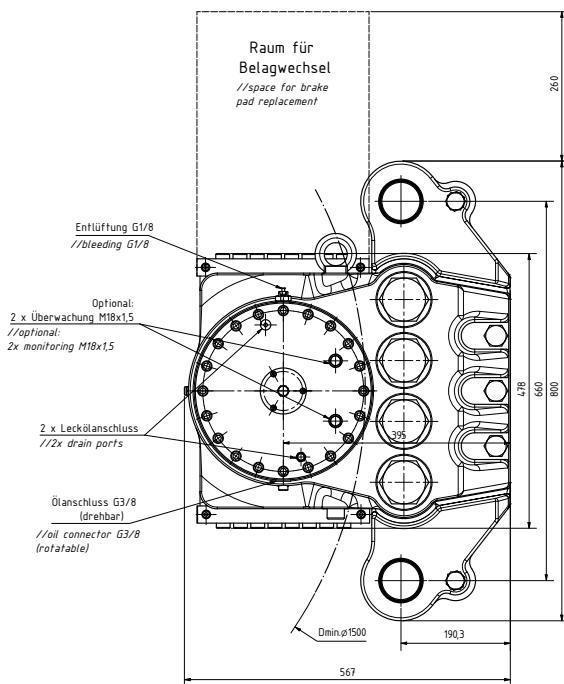
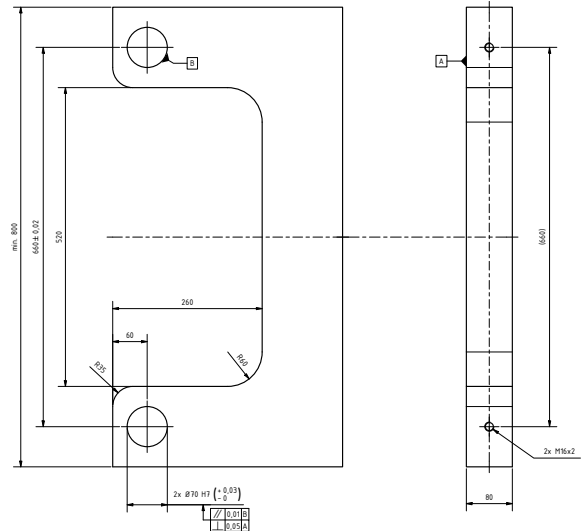
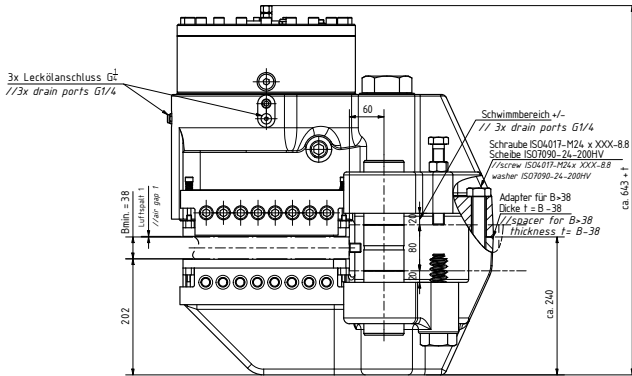
Alle Angaben basierend auf 1 mm Luftspalt je Seite, Reibwert  $\mu = 0,34$

Änderungen vorbehalten

**Elephant Brakes by Rietschoten Germany. Strong like an elephant. Smart like an elephant.**

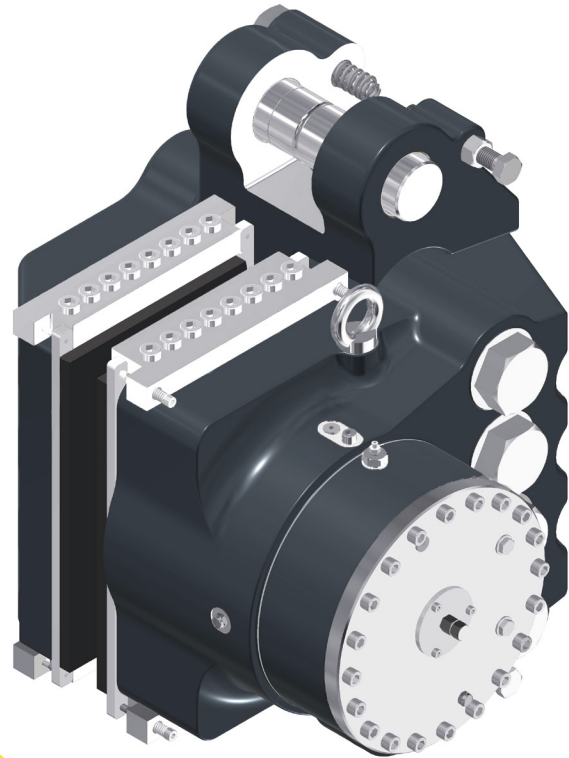
Deutsche van Rietschoten & Houwens GmbH · Junkersstraße 12 · 30179 Hannover · [www.rietschoten.de](http://www.rietschoten.de)

Montageplatte bauseits 1:4  
// mounting plate at site



Befestigungsschrauben und -mutter gehören nicht zum Lieferumfang.  
Mindestqualität der Befestigungsmittel: 8.8

Änderungen vorbehalten



2D-drawing and dimensions see pg. 2

Braking torque  $T_{Br}$  [kNm] = Braking force [kN] x eff. disc radius [m]  
eff. disc radius = (0,5 x brake disc o/d [m]) - 0,142 m

Type	<i>Part-No.</i>	Braking force [kN]	Loss of force per 1 mm stroke [%]	$p_{min.}$ [bar]	$p_{max.}$ [bar]
EBS 008 – 370 FL	<b>60106-370FL</b>	370	8,8	200	250
EBS 008 – 340 FL	<b>60106-340FL</b>	340	9,8	185	235
EBS 008 – 300 FL	<b>60106-300FL</b>	300	11,2	171	221
EBS 008 – 270 FL	<b>60106-270FL</b>	270	12,9	155	205
EBS 008 – 250 FL	<b>60106-250FL</b>	250	8,6	135	185
EBS 008 – 230 FL	<b>60106-230FL</b>	230	9,6	125	175
EBS 008 – 205 FL	<b>60106-205FL</b>	205	10,9	115	165
EBS 008 – 180 FL	<b>60106-180FL</b>	180	12,7	105	155

Oil demand at 1 mm air gap per side: 51,5 cm<sup>3</sup>

Brake suitable for mounting on brake discs according to DIN 15432 Dmin.  $\varnothing \geq 1500$  mm

Mass: 815 kg

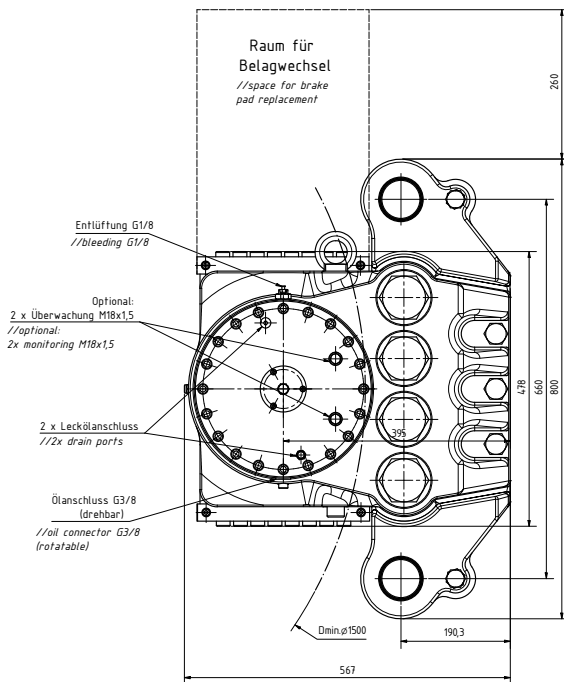
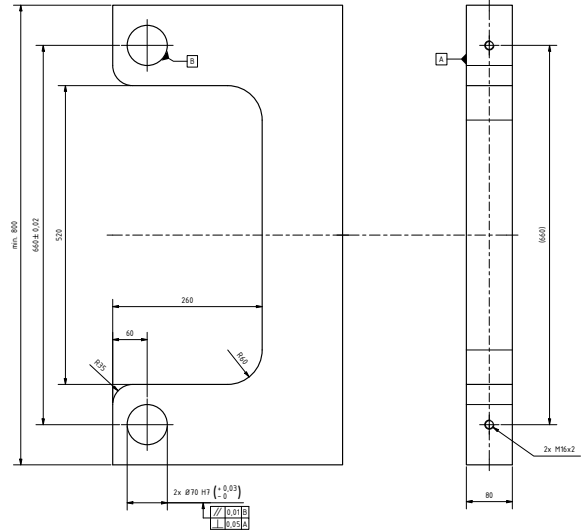
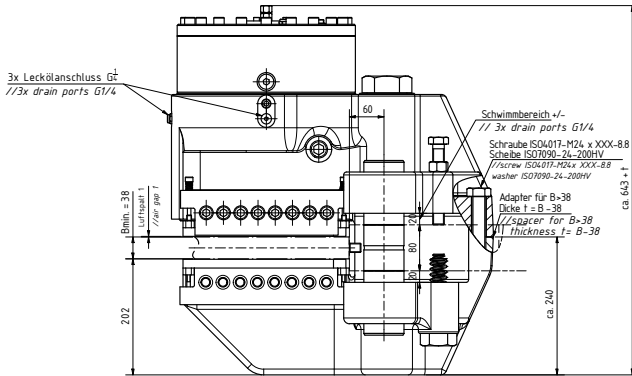
All information based on coefficient of friction  $\mu = 0.34$

Subject to change without notice.

**Elephant Brakes by Rietschoten Germany. Strong like an elephant. Smart like an elephant.**

Deutsche van Rietschoten & Houwens GmbH · Junkersstraße 12 · 30179 Hannover · [www.elephantbrakes.com](http://www.elephantbrakes.com)

Montageplatte bauseits 1:4  
// mounting plate at site



Fixing screws and nuts are not scope of supply.  
Min. quality of fixing materials: 8.8

Subject to change without notice.