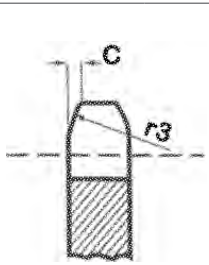
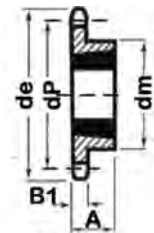


# British Standard Taper Locks

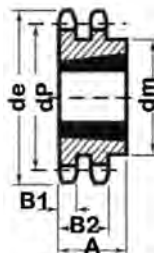
## 06B-1-2 Taper Lock



Pinions	mm
Tooth Radius r3	
Radius Width C	
Tooth Width B1	5.3
Chain	mm
Pitch	9.53
Inside	5.72
Roller ø	6.35



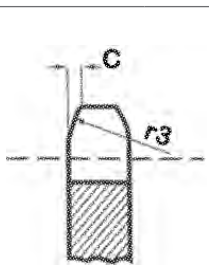
Type 1



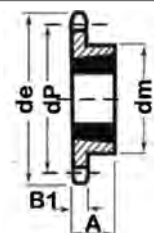
Type 2

Teeth	de	dp	Simplex					Duplex				
			dm	A	Bush	Type	App. Kg	dm	A	Bush	Type	App. Kg
17	55.5	51.83	45	22.23	1008	1	0.14	41	22	1008	2	0.5
18	58.6	54.85	45	22.23	1008	1	0.18	43	22	1008	2	0A
19	61.6	57.87	45	22.23	1008	1	0.23	46	22	1008	2	0.6
20	64.6	60.89	45	22.23	1008	1	0.27	48	22	1008	2	0A
21	67.6	63.91	45	22.23	1008	1	0.32	49	22	1008	2	1.4
22	70.6	66.93	45	22.23	1008	1	0.36	52	22	1008	2	0A
23	73.7	69.95	63	25.40	1210	1	0.41	59	25	1210	2	1.8
24	76.7	72.97	63	25.40	1210	1	0.45	61	25	1210	2	0A
25	79.7	76	63	25.40	1210	1	0.54	64	25	1210	2	1.9
26	83	79.02	63	0A	1210	0A	0A	0A	0A	1210	0A	0A
27	85.7	82.04	63	25.40	1210	1	0.52	70	25	1210	2	2.0
28	89	85.07	63	0A	1210	0A	0A	0A	0A	1210	0A	0A
29	0A	0A	63	25.40	1210	0A	0A	0A	0A	1210	0A	0A
30	94.8	91.12	63	25.40	1210	1	0.54	75	25	1210	2	2.1
36	113							80	25	1610	0A	0A
38	119	115.3	70	25.40	1210	1	0.68	80	25	1610	2	2.5
45	118.6	114.7	70	25.40	1210	1	0.95					
57	149.3	145.2	83	25.40	1210	1	1.25	92	25	1610	2	4.1
76	197.9	193.6	83	25.40	1210	1	1.82	0A	0A	1615	2	6.8
95	246.3	242	83	25.40	1210	1	2.28	0A	0A	1615	2	6.9
114	294.8	290.3	0A	0A	1610	0A	0A					

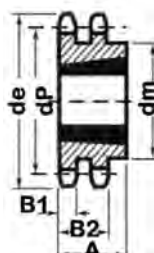
## 08B-1-2 Taper Lock



Pinions	mm
Tooth Radius r3	
Radius Width C	
Tooth Width B1	7.2
Chain	mm
Pitch	12.7
Inside	7.75
Roller ø	8.51



Type 1



Type 2

Teeth	de	dp	Simplex					Duplex				
			dm	A	Bush	Type	App. Kg	dm	A	Bush	Type	App. Kg
15	65.9	61.09	45	22.23	1008	1	0.18	46	22.23	1008	2	0.18
16	69.9	65.1	45	22.23	1008/1108	1	0.23	50	22	1008	2	0A
17	74	69.11	60	25.40	1210	1	0.23	56	25.40	1210	2	0.27
18	78	73.14	62	25.40	1210	1	0.27	60	25	1210	2	
19	82	77.16	63	25.40	1210	1	0.32	62	25.40	1210	2	0.36
20	86	81.19	71	25.40	1210/1610	1	0.41	66	25	1610	2	0A
21	90.1	85.22	71	25.40	1610	1	0.45	70	25.40	1610	2	0.46
22	94.1	89.24	71	25.40	1610	1	0.50	76	25	1610	2	0A
23	98.1	93.27	76	25.40	1610	1	0.59	79	25.40	1610	2	0.59
24	102.1	97.29	76	25.40	1610	1	0.73	84	25	2012	2	0A
25	106.2	101.3	76	25.40	1610	1	0.74	87	31.75	2012	2	0.77
26	110.2	105.4	76	25.40	1610	1	0.76	87	32	2012	2	0A
27	114.2	109.4	76	25.40	1610	1	0.78	87	31.75	2012	2	0.95
28	118.3	113.4	76	25.40	1610	1	0.80	87	32	2012	2	0A
29	112.3	117.5	76	25.40	1610	1	0.81	0A	0A	2012	2	0A
30	126.3	121.5	90	31.75	2012	1	0.82	87	31.75	2012	2	1.59
32	134.4	129.6	90	31.75	2012	1	0.87					
37								0A	0A	2012	2	2.85
38	158.6	153.8	90	31.75	2012	1	1.23	100	32	2012	2	3.18
45	188.6	182.1	100	31.75	2012	1	1.46					
48	200.7	194.2	100	31.75	2012	1	1.55					
57	233.1	230.5	110	31.75	2012	1	2.60	110	31.75	2012	2	7.56
76	313.9	307.3	110	31.75	2012	1	4.27	110	31.75	2012	2	15.26
95	390.7	384.1	110	31.75	2012	1	6.88	110	31.75	2012	2	19.08
114	467.4	460.9	110	44.45	2517	1	10.44	0A	0A	2517	2	22.90