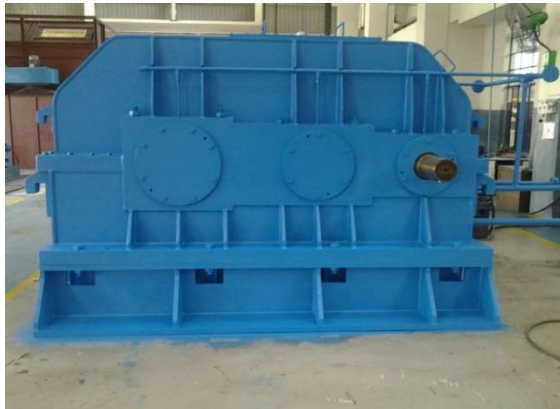




**DROP IN  
or  
1:1 REPLACEMENT**



# Replaced FLENDER – 1 units @ Lafarge Cements





# Replaced FLENDER – 1 units (2<sup>nd</sup> Unit) @ Lafarge Cements







# Replaced FLENDER – 2 units (Turbo Separator) @ Lafarge Cements





# Replaced FLENDER – 1 units @ Lafarge Cements





# Replaced Chinese NGC – 1 units @ Lafarge Cements







# Sharjah Cements - Flender Planetary Gearbox PREMIUM

**Premium**



**Flender**



# Replaced Renold Croft – 2 units @ NPC







# Replaced FLENDER – 3 units @ National Cement





# Replaced FLENDER Combiflex units @ National Cement







# Eskom Coal Pulverizing Mill Gear Unit PREMIUM





# Replaced DAVID BROWN & HITACHI – 16 units @ Eskom







# Replaced DAVID BROWN & HITACHI – 16 units @ Eskom





# Replaced LOESCHE – 3 units @ Eskom







# Replaced LOESCHE – 3 units @ Eskom



Draft





# Replaced PEKRUN – 2 units @ Eskom



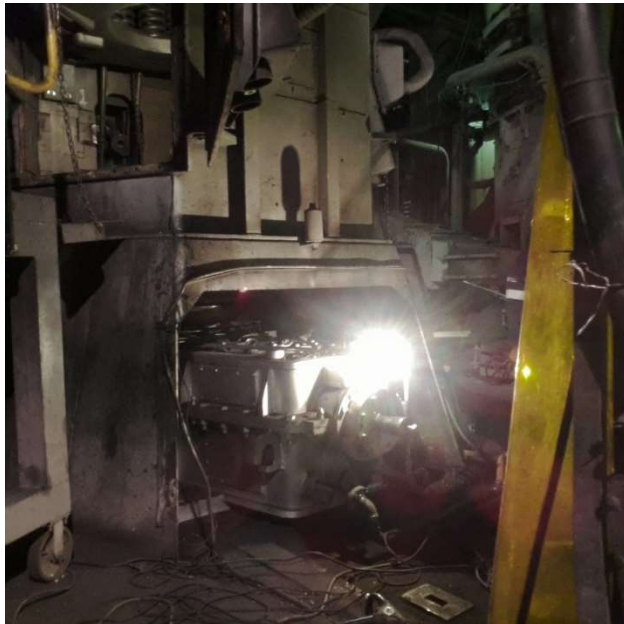




# Replaced PEKRUN – 2 units @ Eskom



Draft





# Array of Mill Gearboxes @ Eskom



Draft







# Replaced Flender, Hansen, SEW & Croft for Conveyor Application @ 13 units Eskom



# Replaced Hansen units @ Eskom





# Replaced Voith Fluidrive units @ Eskom





# Replaced WIL Gearbox – 5 units @ Kinyara Sugars, Uganda







# Replaced WIL Gearbox – 5 units @ Kinyara Sugars, Uganda



A member of the RAI Group

29<sup>th</sup> Nov 2011

To

**M/s Premium Transmission Limited**, South Africa

**Attn : Mr. Satheesh. V. S**

**Subject – Performance Certificate of Premium DROP IN Sugar Mill Gearbox for Walchandnagar Industries Limited Model H3 710 DIS GR 37:1 – 5 nos.**


Against our Order No KSL 100002616 dt 23<sup>rd</sup> Feb 2010, Premium supplied drop in gearbox H 3 710 DIS – 1 no. Based on the satisfactory performance of the gearbox we repeated the order KSL 09003711 dt 1<sup>st</sup> June 2010 for 4 nos - H 3 710 DIS.

All the 5 Drop In gearboxes are working on 24/7 basis for nearly one and half years to our fullest satisfaction without any problem since the commission of unit.

We are also happy with their after sales service support.

We wish many more years of success in future business to M/s Premium Transmission Limited.

For Kinyara Sugar Limited

  
**P.V. Ramadasan**  
General Manager

*Iresistibly Sweet*

Head Office & Factory  
Kinyara Sugar Ltd,  
PO Box 179, Bujenje  
Masindi, Uganda  
Tel (256) 0362 600200 Fax (256) 0362 600211/214/258

Kampala Office  
Kinyara Sugar Ltd,  
Plot No.91, 1st Street, Industrial Area, PO Box 7474  
Kampala, Uganda  
Tel: (256) 041 236382 Fax (256) 041 246383

[www.kinyara.co.ug](http://www.kinyara.co.ug)



# Replaced PONMINI Gearbox – 5 units @ Kakira Sugars, Uganda







# Replaced Planetary Gearbox – 1 unit @ Kakira Sugars, Uganda





# Replaced Planetary Gearbox – 2 units @ SCOUL, Uganda







# Replaced SHINKO – 4 units High Speed Gearbox @ Finchaa Sugars





# Replaced DAVID BROWN @ Tongaat Hulett's Sugars





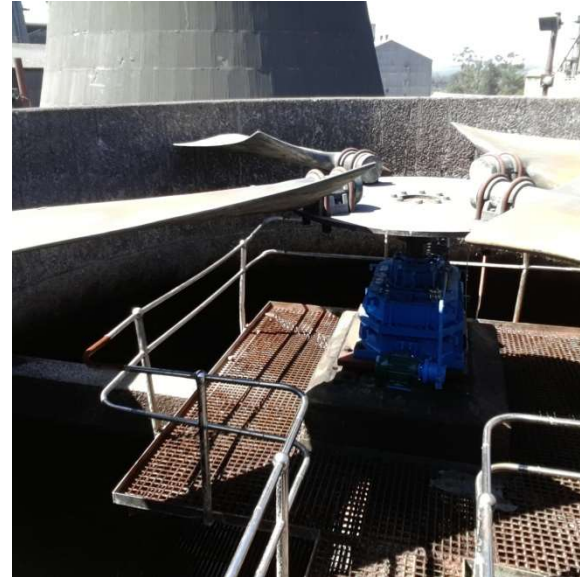


# Replaced DAVID BROWN 10 units @ Tongaat Hulett's Sugars





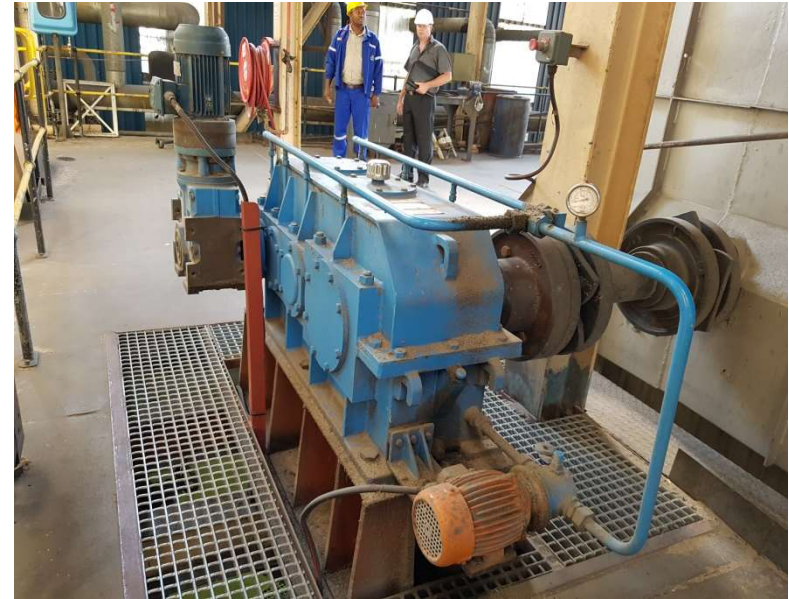
# Replaced Elecon @ Tongaat Hulett's Sugars





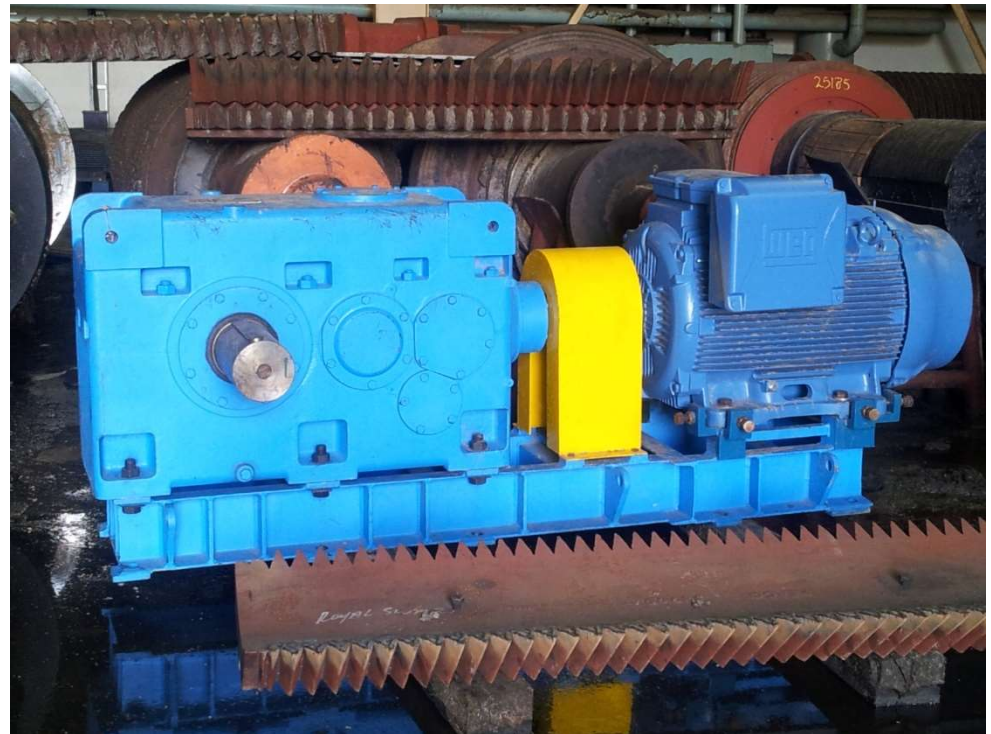


# Flender Gearbox – 2 units – Royal Swazi Sugar Corp





# Power Pack to Royal Swazi Sugars







# Power Pack to Royal Swazi Sugars





# Replaced RENOLD CROFT – 4 units @ SAPREF







# Replaced RENOLD CROFT – 4 units @ SAPREF



Shell and BP  
South African  
Petroleum  
Refineries  
(Pty) Ltd

Co. Reg. No.  
1960/000007/07

P O Box 3179  
Durban, 4000

Refinery Road  
Prospecton

☎ +27 31 480 1911  
☎ +27 31 468 1913

<http://www.sapref.com>

TECHNIDRIVES  
190 Bluff Road  
Jacobs  
Durban  
4000

02 May 2012

RE: Cooling Tower Gearbox – South Africa.

Dear Sir/Madam,

This is to confirm that we procured, installed and commissioned a PREMIUM BS 419 cooling tower gearbox in September 2011.

The gearbox is of the bevel helical gear design. It is driven by a 160 kW 4 pole motor and has a step down ratio of 7.5:1. The gearbox is run in a continuous service.

Since installation the gearbox has run successfully. One of the main benefits was that TECHNIDRIVES were able to ensure that the gearbox was a "drop in" design which required no modifications to the baseplate or drive shaft. Other small modifications were easily accommodated by TECHNIDRIVES. These included the spot facing of bearing covers to accommodate vibration accelerometers and shortening the output shaft to make it more robust.

To date the reliability of the gearbox has been good. TECHNIDRIVES has also provided great service in ensuring a quality product was delivered and has maintained follow up contact and backup.

Warren Knowler  
SAPREF Rotating Equipment Engineer  
+27 (0) 31 480 1809 (t)  
+27 (0) 31 468 2504 (f)  
+27 (0) 82 806 0304 (m)

**DIRECTORS:**

G Derbesy (*Chairman*)  
R Mooldijk (*Dutch*)  
(*Managing Director*)  
M Baker (*British*)  
N Mabena  
B Mohale  
P O'Dwyer (*British*)  
A Raichoora (*British*)  
L J Ryerkerk (*American*)  
D Tarka (*Canadian*)



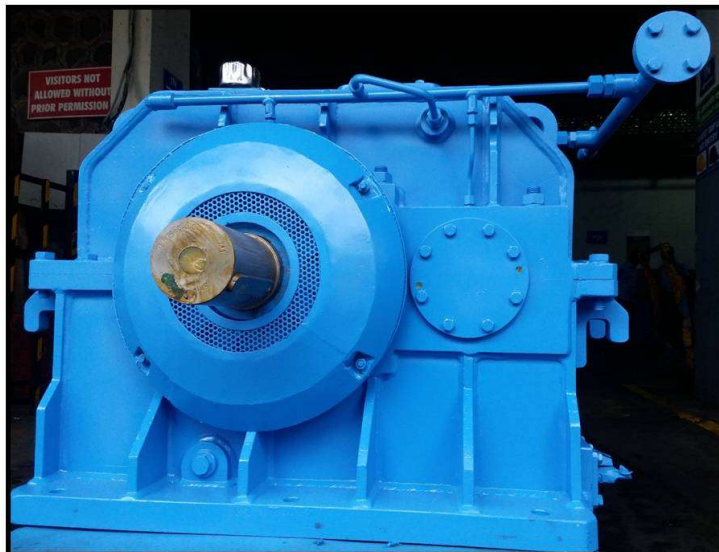
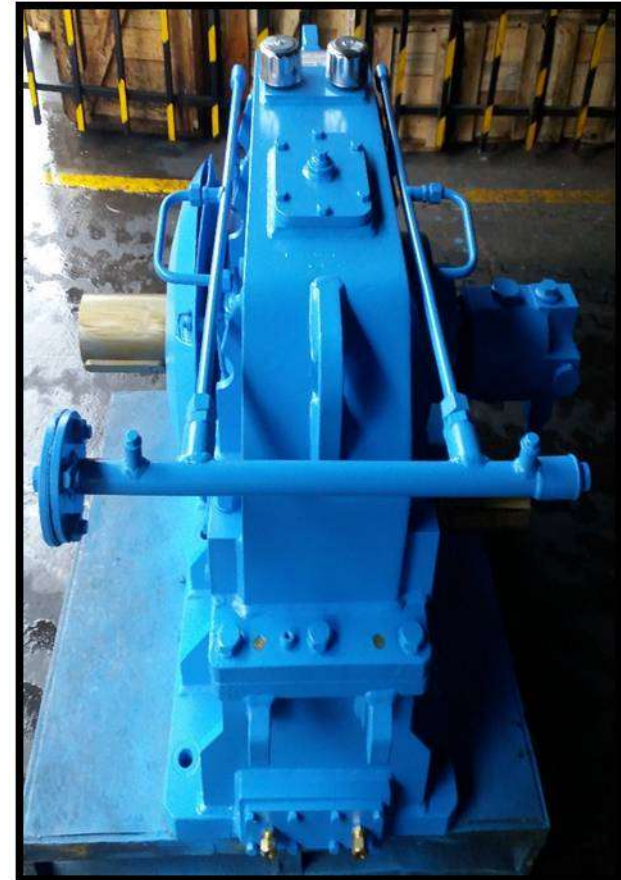


# Replaced Hansen – 2 units @ SAPREF





# Replaced BEW units @ SAPREF





# Replaced DAVID BROWN – 6 units + Spares @ Mondi





# Replaced Renold Croft and SEW @ Mondri



# Replaced Valmet – 1 no @ Mondi







# Replaced David Brown – 1 unit @ Arcelor Mittal





# Replaced FLENDER – 3 units @ Arcelor Mittal







# Replaced Renold Croft – 8 units @ Transnet Durban Port



# Replaced Hansen – 1 unit





# Planetary Gearbox Replacement – 3 units - Egypt





# David Brown Mill Gearboxes Replaced – 3 units - Vanchem







# David Brown Mill Gearboxes Replaced – 2 units - Samancor





# Santasalo Gearboxes Replaced – 1 unit - Samancor







# Replaced David Brown 28" NH Series @ Central Rand Gold





# Replaced Hansen Gearbox @ Mauritania Copper Mine







# Replaced DAVID BROWN NH Series – 26 units @ KCM



# Replaced Flender – 2 units @ KCM







# Replaced FLENDER – 2 units @ Marula Platinum





# Replaced Flender KZN 250 – 2 units @ Kamoto Copper Mines







# Replaced Flender KZN 225 – 2 units @ Katanga Mines





# Replaced Falk – 2 units @ Katanga Mines





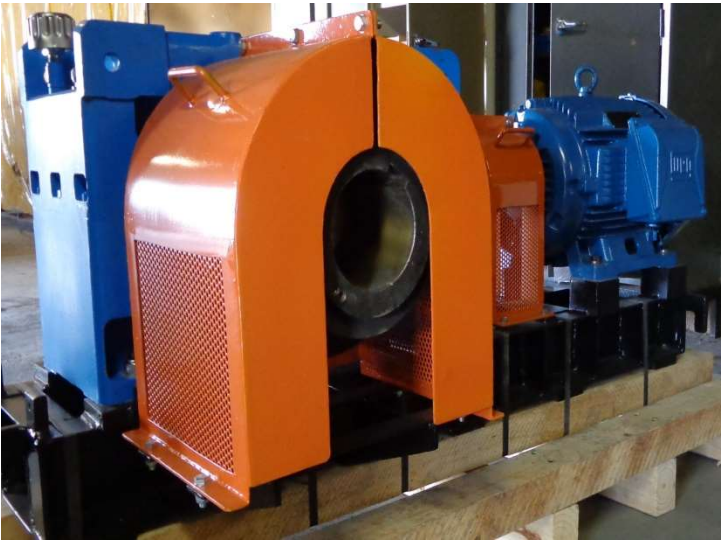


# Replaced Hansen Power Pack 160 kW @ Katanga Mines





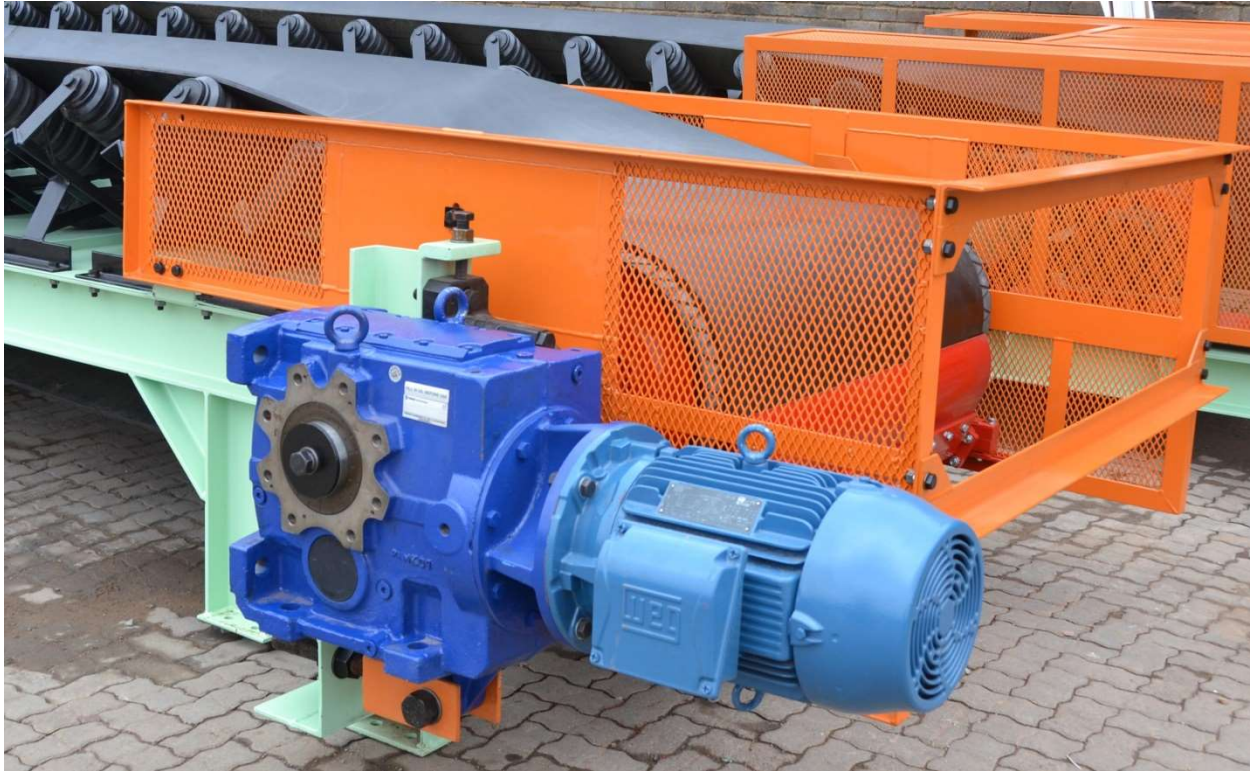
# Replaced Hansen Power Pack 30 kW @ Katanga Mines







# Replaced SEW Geared Motor 15 kW @ Katanga Mines







# Replaced Alpheus Williams & Dowse – 1 unit – Crane Application

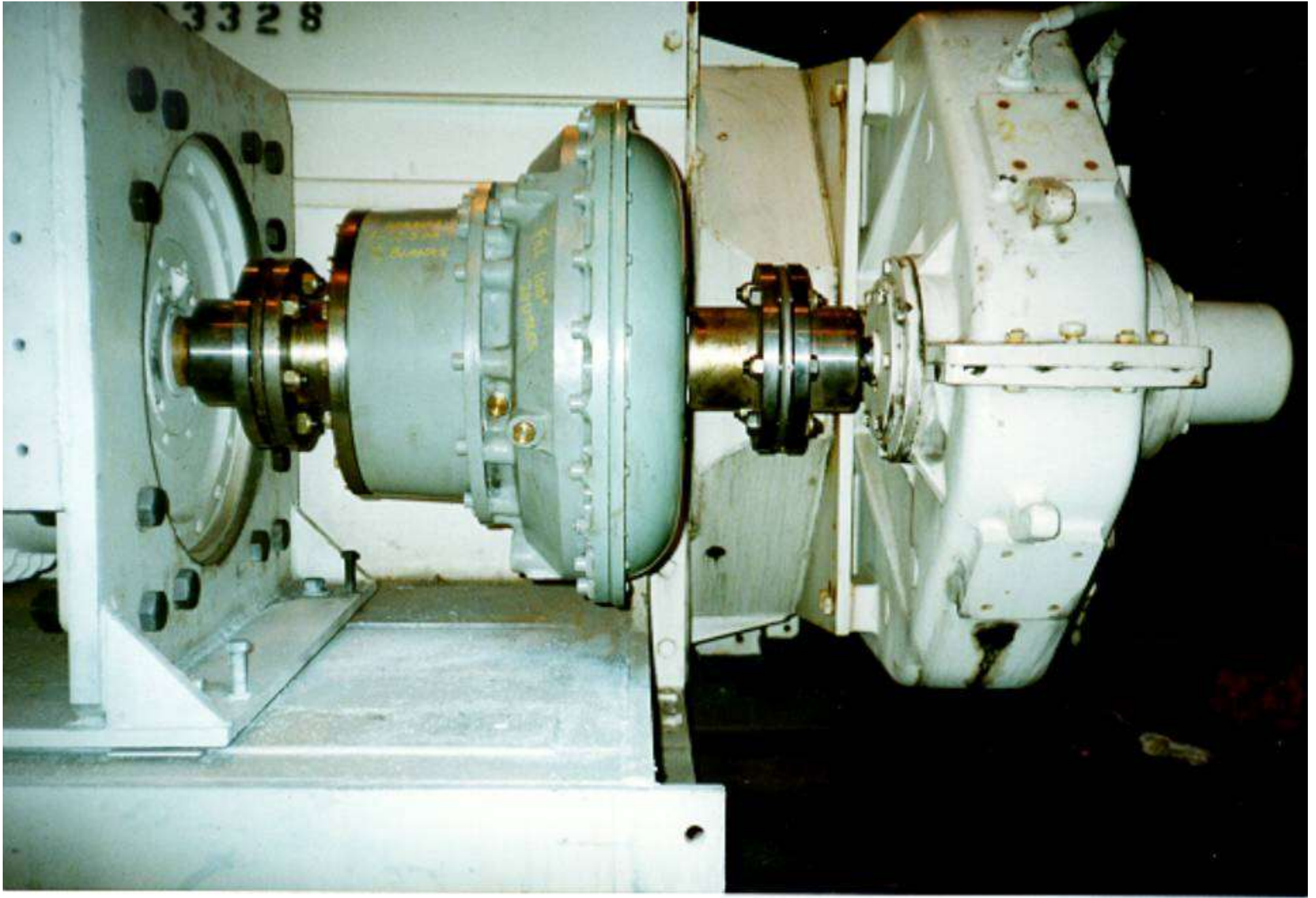






# Replaced David Brown – 2 units @ Luanshia Mines





Supersoft coupling working on a conveyor in S.Africa





# Replaced David Brown – 4 units @ Huber Technology





# Replaced Taiwanese Gearbox – 2 units @ Sapele Rubber

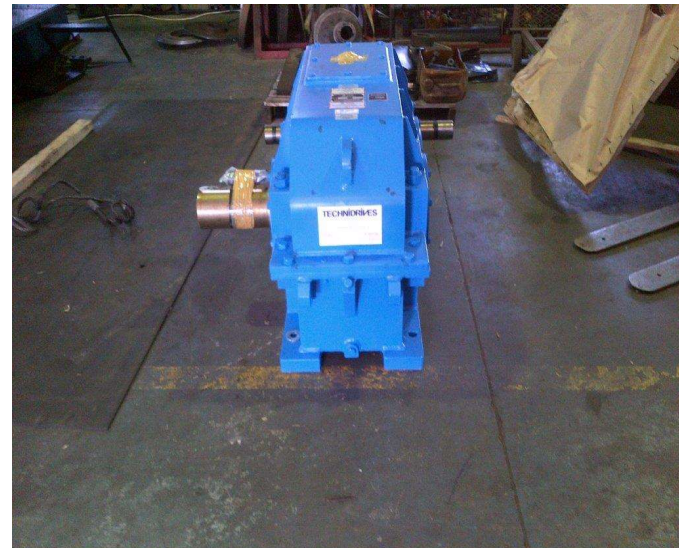




# Replaced FLENDER – 1 units @ Nampak



# Replaced FLENDER – 3 units @ Idwala





# Replaced BEW - H 1 32"- 1 unit @ Idwala





# Replaced David Brown – 1 unit @ Africa Sunoil





# Replaced David Brown – 6 units @ Indorama





# Replaced High speed Gearbox – 1 unit @ Czech Republic







# Replaced Powerpack – 2 units @ UAE





# Replaced Power Pack – 168 units @ Reductores Cunat SA, Spain



## WA HEAD OFFICE

Unit 1 / 45 Inspiration Drive WA 6065  
☎ (08) 9303 4966 📠 (08) 9303 4977  
✉ info@chainanddrives.com.au

## NSW HEAD OFFICE

Unit 7 / 70 Holbeche Road Arndell Park NSW 2148  
☎ (02) 9674 8611 📠 (02) 9674 8363  
✉ salesnsw@chainanddrives.com.au

[www.chainanddrives.com.au](http://www.chainanddrives.com.au)