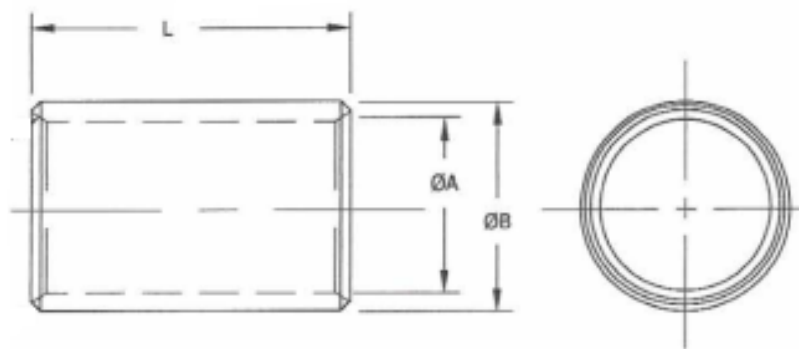


Bronze Bushes (Metric)

Part No.	Inside Diameter (A)	Outside Diameter (B)	Width (L)	Weight	Part No.	Inside Diameter (A)	Outside Diameter (B)	Width (L)	Weight
	(Inch)	(Inch)	(Inch)	(Kg)		(Inch)	(Inch)	(Inch)	(Kg)
FBM081010	8	10	10	0.0025	FBM303540	30	35	40	0.0905
FBM081020	8	10	20	0.005	FBM354040	35	40	40	0.1044
FBM081030	8	10	30	0.0071	FBM354050	35	40	50	0.1305
FBM081040	8	10	40	0.01	FBM354080	35	40	80	0.2087
FBM081210	8	12	10	0.0056	FBM354540	35	45	40	0.2227
FBM081220	8	12	20	0.0111	FBM404540	40	45	40	0.1403
FBM081230	8	12	30	0.0167	FBM4045100	40	45	100	0.3507
FBM101220	10	12	20	0.0061	FBM405050	40	50	50	0.3406
FBM101620	10	16	20	0.0217	FBM455550	45	55	50	0.3479
FBM101630	10	16	30	0.0326	FBM506060	50	60	60	0.4592
FBM101650	10	16	50	0.0543	FBM122050	12	20	50	0.0891
FBM121640	12	16	40	0.0312	FBM162050	16	20	50	0.0501
FBM122030	12	20	30	0.0534	FBM162480	16	24	80	0.1781
FBM122040	12	20	40	0.0712	FBM202430	20	24	30	0.0367
FBM162020	16	20	20	0.0201	FBM202480	20	24	80	0.098
FBM162030	16	20	30	0.0301	FBM203080	20	30	80	0.2783
FBM162060	16	20	60	0.0601	FBM2530100	25	30	100	0.1913
FBM162430	16	24	30	0.0668	FBM2535100	25	35	100	0.4175
FBM202450	20	24	50	0.0612	FBM3040100	30	40	100	0.4871
FBM203030	20	30	30	0.1044	FBM3540100	35	40	100	0.2609
FBM203040	20	30	40	0.1392	FBM3545100	35	45	100	0.5566
FBM203050	20	30	50	0.174	FBM4050100	40	50	100	0.6812
FBM253040	25	30	40	0.0765	FBM4555100	45	55	100	0.6958
FBM253050	25	30	50	0.0957	FBM505580	50	55	80	
FBM253060	25	30	60	0.1148	FBM506080	50	60	80	0.6123
FBM253530	25	35	30	0.1252	FBM5060100	50	60	100	0.7654
FBM253550	25	35	50	0.2087					

Bronze Bar (Inch)



Part No.	Inside Diameter (A)	Outside Diameter (B)	Width (L)	Style	Part No.	Inside Diameter (A)	Outside Diameter (B)	Width (L)	Style
	(Inch)	(Inch)	(Inch)			(Inch)	(Inch)	(Inch)	
BAR-BRONZE-1	-	1	1	Solid	BAR-BRONZE-1-1/2X1/2	1-1/2	1/2	1	Hollow
BAR-BRONZE-1/2	-	1/2	1	Solid	BAR-BRONZE-1-3/4X1	1-3/4	1	1	Hollow
BAR-BRONZE-1-1/2	-	1-1/2	1	Solid	BAR-BRONZE-1-3/4X1-1/4	1-3/4	1-1/4	1	Hollow
BAR-BRONZE-1-1/4	-	1-1/4	1	Solid	BAR-BRONZE-2-1/2X1	2-1/2	1	1	Hollow
BAR-BRONZE-2	-	2	1	Solid					
BAR-BRONZE-3/4	-	3/4	1	Solid					
BAR-BRONZE-5/8	-	5/8	1	Solid					